



Free Stop Arm Violation Camera Upgrade
10-Year Camera Warranty Standard

American Bus Video Inc.

2545 Valley Ridge Drive
Cumming, GA 30040 U.S.A.

Toll Free 866-468-8042

AmericanBusVideo.com

sales@AmericanBusVideo.com

30 years Mobile Digital Sales & Service Experience

100% Solid State
Built in G-Sensor
Built in GPS Module
Built in Wi-Fi Wireless

SD4HD, SD4HW & SD4HC
High Definition Mobile Solution
720P-AHD & 960H Hybrid DVR

GPS Speed & Mapping
Dangerous Driver Charting
10-Year Warranty Available
Automated Data Download



Choice of Cameras



SD4HD - Basic HD Series
SD4HW - GPS and Wi-Fi
SD4HC - GPS, Wi-Fi & 3G



Choice of Cameras



SD4HD DVR is the basic High Definition 720P-AHD for those wishing Video & Audio w/o bells and whistles.
SD4HW High Definition 720P-AHD w/GPS vehicle speed, On Screen Mapping, Wi-Fi Wireless Data Download.
SD4HC Live View Video Streaming GPS vehicle speed, On Screen Mapping, Wi-Fi Wireless Data Download.

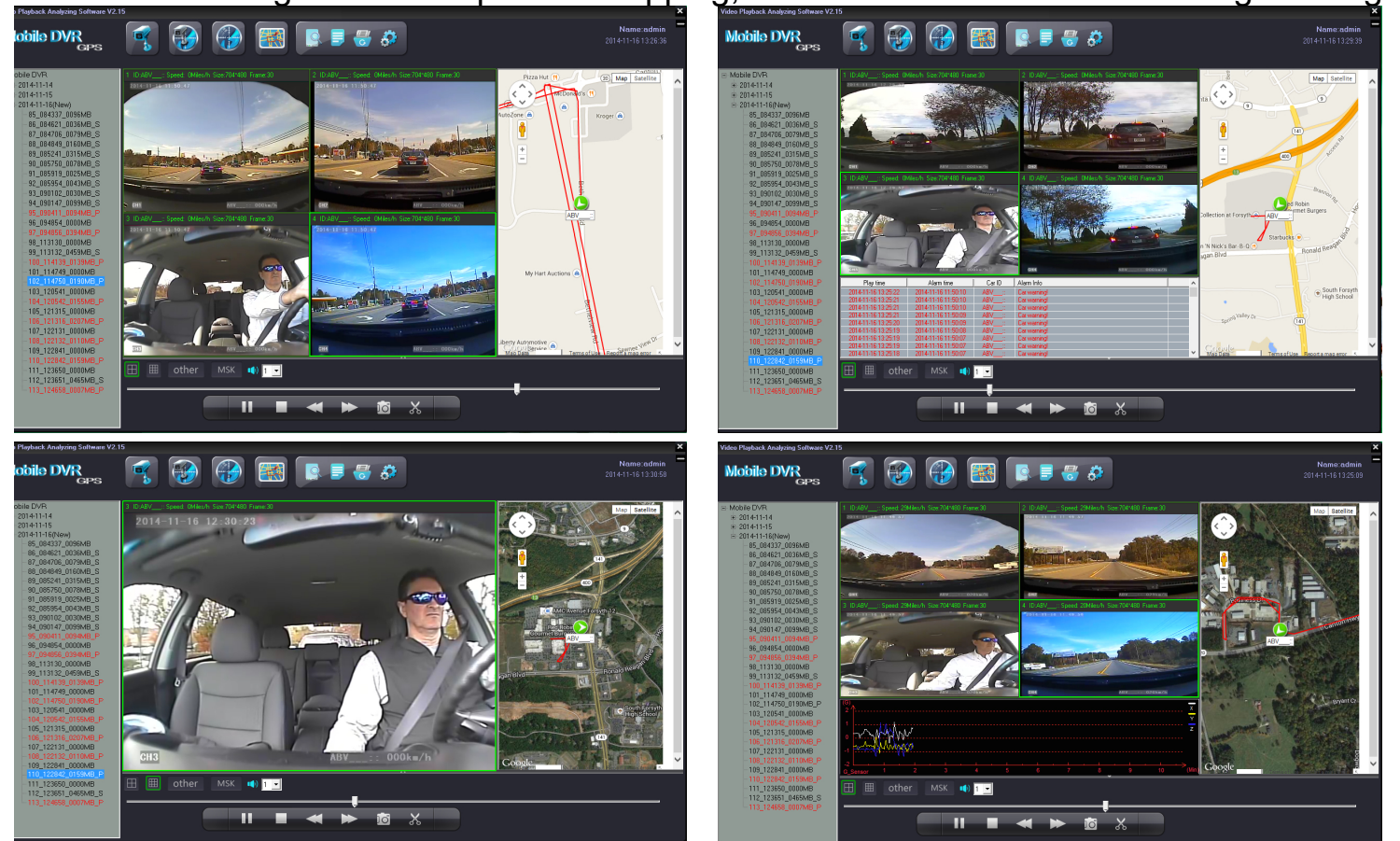
Features Built Into SD4HD, SD4HW & SD4HC High Definition Mobile Video Driver Safety Series

- Live View 3G/4G Video Streaming Vehicle Video Surveillance Camera solution (SD4HC only)
- Live GPS Vehicle Tracking, speed and location via Google maps (SD4HC only)
- Live Intercom Driver Communication Microphone (SD4HC only)
- Live Alerts for Crash & Over Speed Events & Driver Panic Button (SD4HC only)
- Smartphone App for Remote Driver Surveillance Viewing via PC or Smartphone (SD4HC only)
- Wi-Fi Wireless module built into DVR for Automated data file download via Wi-Fi (SD4HW & SD4HC only)
- High Definition 720P Video (1280x720) from 4 cameras at 30FPS
- Stop Arm Camera (ExCAM 12mm) for School Bus Stop Arm violation of vehicle license plate capture
- 256 GB 100% Solid State Digital memory capacity, Twin 128GB SD bay, for rugged reliable data memory storage
- 4-channel DVR can accept up to 4 cameras with 4 channels of audio
- Built in Accelerometer / G-Sensor Charting documents Dangerous Driving Behaviors
- Active Driver Safety Alerts when they exceed safe driving thresholds
- Mosaic "Blurring" software to protect children identities during playback
- GPS Vehicle Speed & On Screen Mapping (SD4HW & SD4HC only)
- Enhanced File Security, Unauthorized users cannot play files on their PC w/o Dedicated Video Player software
- Hybrid 720P-AHD DVR can also use standard Analog D1 resolution cameras for older system upgrades to High Definition
- 10-Year Extended Warranty available on this 100% Solid State DVR
- Loyalty Reward DVR Upgrade Eligibility, Future DVR Upgrade for less than ½ cost of new DVR

Note: All of the mages on this page are D1 Resolution to keep the file size of document small, for fast download & e-mail.
Actual 720P-AHD High Definition images are much larger and clearer as they employ Megapixel cameras and record in AHD.



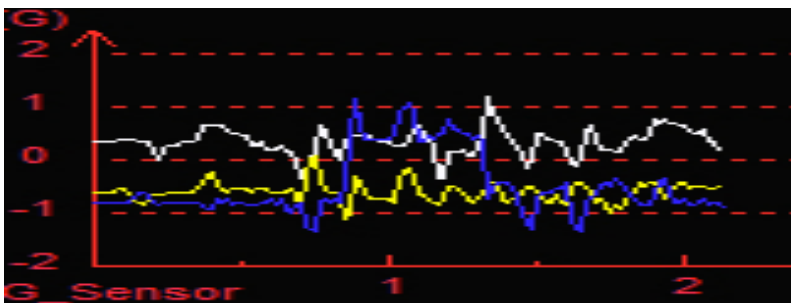
SD4HW GPS Google Vehicle Speed & Mapping, SD4HC adds Live GPS Tracking/Routing



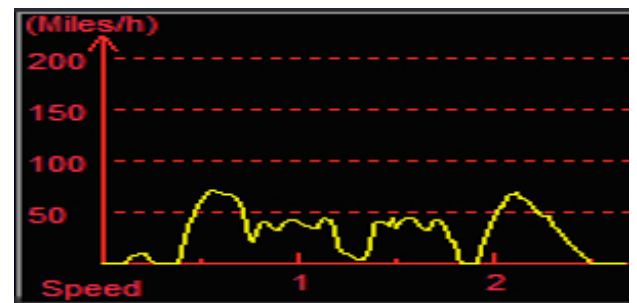
SD4HD, SD4HW & SD4HC incorporate Built in 3-Axis Accelerometer & G-Force Sensor



The SD4HD, SD4HW & SD4HC provide sequential impartial documentation of potential dangerous driving behaviors that can adversely affect your fleet equipment investment or drivers safety and help provide a driver risk management safety tool that can be used to highlight and document Dangerous Driving Behaviors. Active Driver Safety Alerts can help drivers learn what not to do.



Dangerous Driving Behaviors Charting



Speed Charting for Speeders



Stop Dangerous Driving Behavior



American Bus Video Inc.

Toll Free 866-468-8042

AmericanBusVideo.com

VehicleVideoCameras.com

FleetDriverRiskManagement.com

30+ Years of Fleet Driver Safety System Sales & Service Experience

All Rights Reserved. © American Bus Video Inc. 2018

SD4HC Live View 3G CMS Video Streaming GUI, GPS Tracking & Driver Communication

MS Remote Monitor System V2.57

Mobile DVR GPS

Name: use
2015-02-13 19:41:48

Input CarName Search

00000000(GPS position)
A/U92958(GPS position)
A/000000(GPS position)
A/B19970(GPS position)
A/B19971(GPS position)
A/000000(GPS position)
A/000000(GPS position)
A/BQ2655(GPS position)
A/BP2672(GPS position)
A/BP2672(GPS normal)
0099_1
0099_2
0099_3
0099_4
0099_5

Basic Info
CarID: A/BP2672
DeviceID: 00023308
Speed: 66 Km/h
Lat: N 36.119628
Long: E 120.448503
DIPercent: 0%
Speedometer: 11.201 Km

PTZ Control

2015-02-14 08:43:15
2015-02-14 08:43:18
2015-02-14 08:43:18
2015-02-14 08:43:17

2015-02-13 19:41:03
2015-02-13 19:40:53
2015-02-13 19:40:41
2015-02-13 19:38:50
2015-02-13 19:38:07
2015-02-13 19:38:03
2015-02-13 19:36:38
2015-02-13 19:36:27
2015-02-13 19:36:15

Car ID
A/B1680
A/B1680
A/BP2672
A/BP2672
A/BP2672
A/BQ3786
A/BP2672
A/BP2672
A/BP2672
A/BP2672

Alarm Info
Overspeed82 km/h
Overspeed80 km/h
Overspeed80 km/h
Overspeed80 km/h
Overspeed80 km/h
Car Online
Overspeed81 km/h
Overspeed84 km/h
Overspeed80 km/h

Long
E 120.431
E 120.431
E 120.447
E 120.447
E 120.444
E 120.437
E 120.436
E 120.436

Lat
N 36.127
N 36.129
N 36.126
N 36.143
N 36.151
N 36.167
N 36.163
N 36.172

Results
Pro_time
Address

219.134.190.134: Connect to server success!
Status: videoimap mode
Flow: 219 KB/s

SD4HC Live View 3G CMS Video Streaming GUI, GPS Tracking & Driver Communication

MS Remote Monitor System V2.57

Mobile DVR GPS

Name: use
2015-02-13 19:25:32

Input CarName Search

00000000(GPS position)
A/U92958(GPS position)
A/000000(GPS position)
A/B19970(GPS position)
A/B19971(GPS position)
A/000000(GPS position)
A/000000(GPS position)
A/BQ2655(GPS position)
A/BP2672(GPS position)
A/BP2672(GPS normal)
0099_1
0099_2
0099_3
0099_4

Basic Info
CarID: A/BP2672
DeviceID: 00023308
Speed: 60 Km/h
Lat: N 36.272673
Long: E 120.397003
DIPercent: 0%
Speedometer: 1.857 Km

PTZ Control

2015-02-14 08:26:38
2015-02-14 08:26:37
2015-02-14 08:26:39
2015-02-14 08:26:40

2015-02-13 19:25:26
2015-02-13 19:25:13
2015-02-13 19:23:38
2015-02-13 19:22:02
2015-02-13 19:20:34
2015-02-13 19:19:51

Car ID
A/B1680
00008516
A/B1680
A/BP2672
A/BP2672
A/BQ1660

Alarm Info
Car Online
Car Online
Car Offline
Car Online
Car Online
Car Offline

Long
E 120.431
E 120.431
E 120.447
E 120.447
E 120.444
E 120.437
E 120.436
E 120.436

Lat
N 36.127
N 36.129
N 36.126
N 36.143
N 36.151
N 36.167
N 36.163
N 36.172

Results
Pro_time
Address

219.134.190.134: Connect to server success!
Status: videoimap mode
Flow: 156 KB/s

| Items | parameters | Specifications Performance |
|------------------------------|---------------------------|--|
| Name | Product Name | SD4HD, SD4HW & SD4HC |
| System | Operation System | Linux |
| | File System | Proprietary Format, error encryption & file management |
| | System Privileges | User Password |
| Video | Video Input | 4 channels 720P-AHD or 960H |
| | Video Output | 2 Channel NTSC Output, 1.0Vp-p, 75Ω, 1 channel 1080P |
| | Video Display | 1 Or 4 Screen Display |
| | Video Standard | NTSC: 30frames/Sec |
| | System Resources | NTSC: 120 Frames |
| Audio | Audio Input | Four Channels Independent Input 600Ω |
| | Audio Output | 2 Channel (4 Channels Can Be Convert Freely) |
| | Basic Output Level | 1.0—2.2V |
| | Distortion Plus Noise = | ≤-30dB |
| | Recording Mode | Sound And Image Synchronization |
| | Audio Compression = | ADPCM |
| Digital Processing & Storage | Image Compression | H.264 |
| | Image Format | NTSC: 4@720P (1280 x 720) |
| | Video Stream | CIF: 24K-112KByte/s; HD1 & D1: 24K-192KByte/s; |
| | Video Storage Consumption | CIF: 85M-394MByte / hour / channel D1: 85M-675MByte / hour / channel 720: 150M-675MByte / hour / channel |
| | Playback Resolution | NTSC: 4@720p (1280x720) |
| | Audio Bitrate | 96 KByte -192KByte / s / channel |
| | Audio Storage Consumption | 14MByte / hour / channel |
| | SD Storage | Double 128GB SD card storage |
| | Image Quality | Eight Grades to Choose (1 is highest quality) |
| Alarm | Alarm in | 4 Channels Input. High Voltage Trigger |
| | Alarm out | 1 Channels output |
| USB | Motion Detection | High, Medium, Low sensitivity adjustment |
| | Host Access | Option For USB Disk Backup |
| LAN | RJ45 | Option RJ45 Ethernet Port for video monitoring |
| | Wi-Fi | Option Wi-Fi Module Outside (SD4HD, SD4HW & SD4HC) |
| | 3G | Option HSPDA/EVDO/CDMA2000/FDD-LTE Module Inside |
| GPS | GPS | Option to Expand GPS Module Inside |
| Extend Interface | RS232 | Option to connect with other vehicle equipment |
| | RS485 | Option to connect with PTZ Camera |
| | Intercom | Option to Expand Intercom Module Inside |
| | G-Sensor | Option to Expand G-Sensor Module Inside |
| | Canbus | Option to Expand Canbus Module Inside |
| Others | Power Consumption | DC8-36V 8W without HDD |
| | Working Temperature | -20°C ~ +85°C (-4 to +185 Fahrenheit) >80% |
| | Clock | Built-In Clock, Calendar |
| Dimension | Product Size | 132(L) x 137(W) x 40(H) mm |
| | Product Weight | 0.6KG |

All DVR specifications, features, GUI, hardware subject to frequent change by the manufacturer without notice. ABV provides no CMS server installation support, no CMS server setup support, no training or technical support in the use or operations of any customer Wi-Fi or 3G network, or CMS software program provided. Those who wish to use Wi-Fi or 3G network features must provide their own in house MCSA trained staff to setup the network, program the DVRs and maintain the system integrity for proper function. Memory storage affected by FPS, resolution & number of cameras. As a Security protocol, PCs will not recognize SD card file format unless the dedicated video file Player Program is running on the PC in Administrator mode.

American Bus Video Inc.

Toll Free 866-468-8042

AmericanBusVideo.com

VehicleVideoCameras.com

FleetDriverRiskManagement.com

All Rights Reserved. © American Bus Video Inc. 2018