



**Stop Arm Violation Camera
Free Stop Arm Camera Upgrade**

American Bus Video Inc.

2545 Valley Ridge Drive
Cumming, GA 30040

Toll Free 866-468-8042

AmericanBusVideo.com

sales@AmericanBusVideo.com

30 years Mobile Digital Sales & Service Experience

Built in GPS Module
Built in G-Sensor Sensor
Driver IR LED DVR Status Indicator
Full HD 1080p Stop Arm Camera

SD4FHD & SD4FHW
High Definition Surveillance
10-Year Camera Warranty

Speed & On Screen Mapping
Dangerous Driver Charting
DVR Status Verification Display
Stop Arm License Capture



2 Megapixel NV Cameras w/Audio



2 Megapixel NV Cameras w/Audio



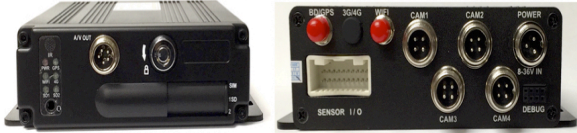
The SD4FHD, SD4FHW & SD4FHC mobile vehicle DVR is a breakthrough in 4-channel conventional mobile video technology that now provides Full HD 1920 x 1080 High Definition video camera surveillance for those who want the best image available for their vehicle or school bus video evidence recordings. The SD4FHD is the non-network version for those interested in a standalone mobile video solution without the added expense, complexity or hassles associated with of Wi-Fi or 3G cellular streaming.

Leading Features Built Into SD4FH Mobile Vehicle High Definition Video Security Surveillance Solution:

- Full High Definition (1920x1080) Full HD 4 channels 1080P simultaneous recording 120FPS
- 512GB SDXC memory support (Not included, must be customer provided)
- Built in Accelerometer & G-Sensor Charting Documents & Alerts during Dangerous Driving Behaviors
- GPS built into DVR provides School Bus Speed & On Screen Mapping without service fee for use
- Built in Wi-Fi module on SD4FHW & SD4FHC for automated Data Download
- Stop Arm Violation High Definition 1920 x 1080 Camera documentation supported
- Mosaic "Blurring" feature in Video Player to protect children identities during playback
- Full Duplex Under full loading status, playback the recorded data with no frame loss
- Dual Video watermark: Overt & Covert government only access watermark video security
- Remote Driver DVR Status Indicator so driver can verify function when DVR in hidden location
- Full 1080P & H.264 compression for images 4 times clearer than standard D1 technology
- AHD DVR technology can use older D1 & 720 cameras as long as they have standard CCTV connections
- 10-Year Camera Warranty Standard on all 1080P-AHD cameras
- "Testudo Lifetime System Warranty" (Option available for all 1080P-AHD systems)

*All images shown are low resolution for small PDF file; actual images are High Definition Full HD 1920x1080

SD4FHD, SD4FHW, SD4FHC Specifications:

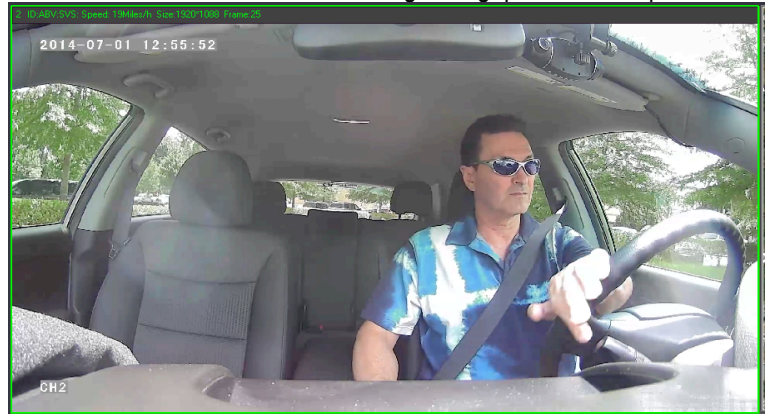


| Items | Device parameters | Performance index |
|------------------------------|------------------------------|--|
| Name | SD4FHD, SD4FHW, SD4FHC | 4 Channel Mobile DVR (SDXC Storage)* |
| System | Operation System | Linux |
| | Operation Interface | Graphical Interfaces, Chinese/English optional |
| | File System | Proprietary Format |
| | System Security | User Password |
| Video | Video Input | 4 Channel Megapixel Independent Input: 1.0Vp-p,75Ω Both B&W and Color Cameras |
| | Video Output | 1 Channel NTSC Output, 1.0Vp-p,75Ω Composite Video Signal |
| | Video Display | 1 Or 4 Screen Display |
| | Video Standard | NTSC: 30frames/Sec |
| | System Resources | NTSC: 120 Frames |
| Audio | Audio Input | Four Channels Independent Input 600Ω |
| | Audio Output | 1 Channel (4 Channels Can Be Convert Freely) |
| | Basic Output Level | 1.0-2.2V |
| | Distortion Plus Noise | ≤30dB |
| | Recording Mode | Sound And Image Synchronization |
| | Audio Compression | ADPCM |
| | Image Compression | H.264 Fixed Code Stream |
| | Image Format | 4@1080P (1920*1080) |
| Digital Processing & Storage | Video Stream | 1.0M-6.0Mbit/s |
| | Video Taking Up Of Hard Disk | 450M-2.6GByte/hour |
| | Playback Resolution | 1 or 4@1080P |
| | Audio Bitrate | 4KByte / s / channel |
| | Audio Taking Up Of Hard Disk | 14MByte / hour / channel |
| | SDXC Storage* | Support Max 512GB (Not included with DVR)* |
| | Image Quality | Eight Grades to Choose |
| Alarm | Alarm in | 8 Channels Independent Input. High Voltage Trigger |
| | Alarm out | 2 Channels Independent output |
| | Move Detect | Available |
| USB Port | Host Access | Can Expand One For USB Disk Backup (optional) |
| Network | LAN Port (RJ45) | Built in support with Wi-Fi equipped DVR |
| Interface | Wi-Fi | Optional (included with SD4FHW DVR based systems) |
| | 3G | Optional (included with SD4FHC DVR based systems) |
| GPS | GPS | SD4FHW & SD4FHC, On Screen Mapping w/no service fees |
| Extend Interface | RS232 | Optional (included with SD4FHC DVR based systems) |
| | RS485 | Optional (included with SD4FHC DVR based systems) |
| | Intercom | Optional (included with SD4FHC DVR based systems) |
| Others | G-Sensor | Built in 3-axis Accelerometer |
| | Power Consumption | DC8-36V 5% ≤12W |
| | Working Temperature | -20°C ~ +85°C ≤80% |
| | Clock | Built-in Clock, Calendar |
| Packaging | Product Size | 132(L) x 137(W) x 40(H) mm |
| | Product Weight | 0.6KG |

Road Camera Forward Facing 2 Megapixel HD1080p*



Driver Camera Interior Facing 2 Megapixel HD1080p*



License Plate Capture Side Camera 2 Megapixel HD1080p*



License Plate Capture Forward Camera 2 Megapixel HD1080p*



Drive Route Taken Indicator*



*All images shown are low resolution for small PDF file; actual images are High Definition Full HD 1920x1080

SD4FH incorporates Built in 3-Axis Accelerometer & G-Force Sensor *



*All images shown are low resolution for small PDF file; actual images are High Definition Full HD 1920x1080

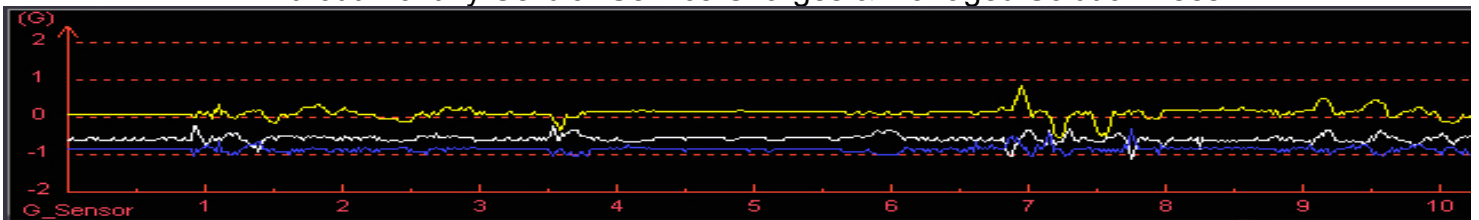
The "SD4FHD, SD4FHW & SD4FHC" provide sequential impartial documentation of potential dangerous driving behaviors that can adversely affect your fleet equipment investment or drivers safety and help provide a driver risk management safety tool that can be used to highlight and document Dangerous Driving Behaviors.



Stop Dangerous Fleet Driving Behavior



Without Monthly Cellular Service Charges & Managed Solution Fees



All DVR specifications, features as well as hardware represented subject to frequent change without notice. ABV provides no CMS server installation support, no CMS server setup support or technical support in the use or operations of any Wi-Fi network, or CMS software.

American Bus Video Inc.

Toll Free 866-468-8042

AmericanBusVideo.com

sales@AmericanBusVideo.com

30 Years of Fleet Driver Safety System Sales & Service Experience

All Rights Reserved. © American Bus Video Inc. 2018