



SS4 Industrial Grade Mobile Video Solution **100% Solid State, Waterproof IP66, 1TB SSD**

SS4 1080P-AHD for those wishing Video & Audio w/o bells and whistles.

SS4GW 1080P-AHD w/GPS vehicle speed, On Screen Mapping, Wi-Fi Wireless Data Download.

Best Value School Bus Camera Features:

- 1080P High Definition Video & Audio from 4 cameras with Microphone
- 1TB SATA III SSD or 512GB SDXC 100% Solid State memory capacity
- WaterProof DVR, IP66 rated, High Security Key-lock & Locking Steel Faceplate
- Built in Accelerometer / G-Sensor documents Dangerous Driving Behaviors
- Free Stop Arm Camera Upgrade for School Bus Stop Arm violation
- Driver Event Marker Button & DVR Status Indicator (Optional)
- Backwards Compatible with 25 years of Analog cameras sold by FMI/ABV

Best Value School Bus Camera Warranty:

- 10-Year Camera Warranty Standard
- Lifetime Memory Warranty Standard (SDXC only)
- "Testudo Lifetime System Warranty" (Optional)

American Bus Video Inc.

Toll Free 866-468-8042

AmericanBusVideo.com

sales@AmericanBusVideo.com

10-Year Camera Warranty Standard

Testudo Lifetime System Warranty Available

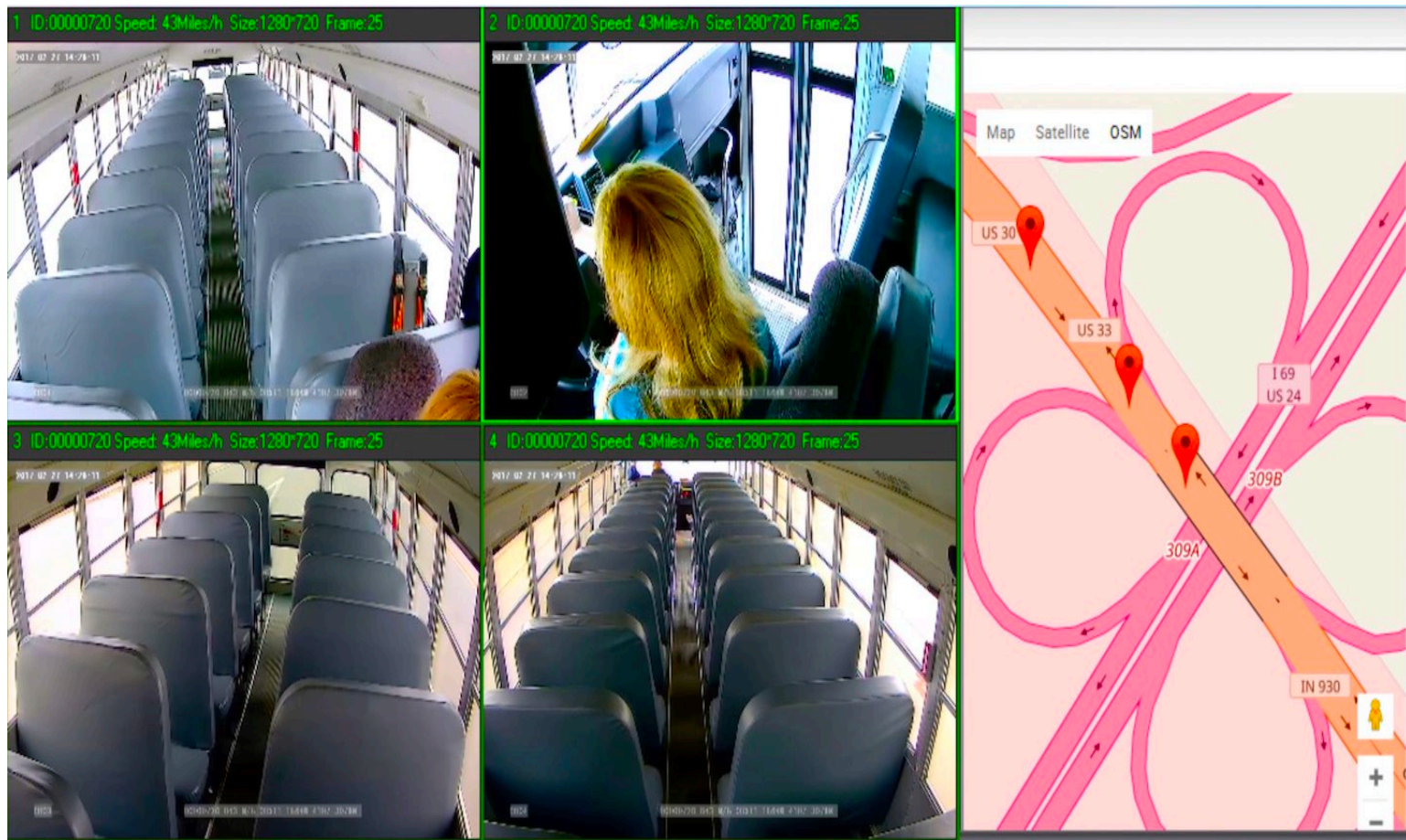
30+ Years of Mobile Digital Sales & Service Experience

All DVR hardware specifications, features, GUI features/representations, subject to change without notice. Those who use Wi-Fi or 4G LTE / 3G network features must provide their own in house MCSA trained staff to setup the network, program the DVRs and maintain all aspects of the CMS server network.

Sample images from lower resolution SD4HW systems, actual image will be 2 times higher resolution and much clearer.

*Testudo Lifetime System Warranty is optional.

SD4HW w/GPS Quad view screenshots of the Video File Player with Vehicle ID#, Time/Date, Speed, GPS location stamped images for use in court if needed. OSM mapping selected with GPS bread crumbs showing route taken.



SD4HW Night Vision IR LEDs active for recording in total darkness, OSM map setting GPS breadcrumbs showing route
SD4HW High Definition Road Facing camera, with IR LEDs disabled to prevent "ghosting" glare off windshield



SD4HW is Backwards compatible with Analog cameras sold over the last 25 years from FMI/ABV



Item	Parameter	Specifications
System	Operating system	Linux
	Operating interface	Graphical menu operation interface(OSD)
	Video permission	Administrator & user setting
Video	Video input	4 x 1080P analog high definition
	CVBS output	1CH 6pin aviation connector output PAL/NTSC
	VGA output	1CH VGA output, 1080P
	Video display	1, 2, 3, 4
	Video standard	PAL: 25FPS, NTSC: 30FPS
	Compression	H.264 main profile
Audio	Audio input	4 channels
	Audio output	2 channels
	Record format	Synchronized video & audio recording
	Audio compression	ADPCM
Digital processing & storage	Image resolution	Max 4 x 1080P (1920 x 1080)
	Video bit rate	64kbps~4Mbps/channel
	Storage	56~2700MB/ (channel x hour)
	Audio bit rate	32kbps
	Storage	2.5 inch SATA SSD x 1, max 1TB; SD card x 1, max 128GB
Alarm	Alarm input	6 channels
	Alarm output	2 channels
	Motion detection	High/low/off sensitivity adjustable
Interface for communication	IR	1 channel
	RS232	1 channel
	RS485	1 channel
	CAN	2 channels
	RJ45	1 channel
	USB2.0	2 channels; 1 channel for copying file (SSD/ SD) and firmware upgrade 1 channel for copying SSD file (only for connecting to computer USB)
Wireless	2G/3G/4G	Optional
	Wi-Fi	Optional
GPS	Optional	Optional
G-Force Gyroscope	Nine axis sensor	Available
Software	Windows client	Available
	iOS client	Available
Power	Input	10~32V (Max Consumption 60W, Standby Consumption 100mW)
	Output	12V@3.5A