

SD4FHDT, SD4FHWT & SD4FHCT



SD4FHDT Low-Cost 1080P-AHD for those wishing for Video & Audio w/o bells and whistles.

SD4FHWT Low-Cost 1080P-AHD w/GPS vehicle speed, On-Screen Mapping, Wi-Fi Wireless Data Download

SD4FHCT Live View Video Streaming GPS vehicle speed, On-Screen Mapping, Wi-Fi Wireless Data Download.

Best Value School Bus Camera Features:

- **10-Year Camera Warranty Standard**
- **Lifetime Memory Warranty Standard**
- **“Testudo Lifetime System Warranty” (Included)**
- **Free Stop Arm Camera Upgrade for School Bus Stop Arm violation**
- **1TB 100% Solid State memory capacity, w/Twin 512GB SD bay**
- **4, 8 & 12 Camera Modular Solutions for 100% Solid State Reliability**
- **Built in Accelerometer / G-Sensor documents Dangerous Driving Behaviors**
- **High Definition 1080P Video from 4, 8 or 12 camera modular systems**
- **Backwards Compatible with 25 years of Analog cameras sold by FMI/ABV**
- **Mosaic "Blurring" software to protect children identities during playback**

American Bus Video Inc.

Toll Free 866-468-8042

AmericanBusVideo.com

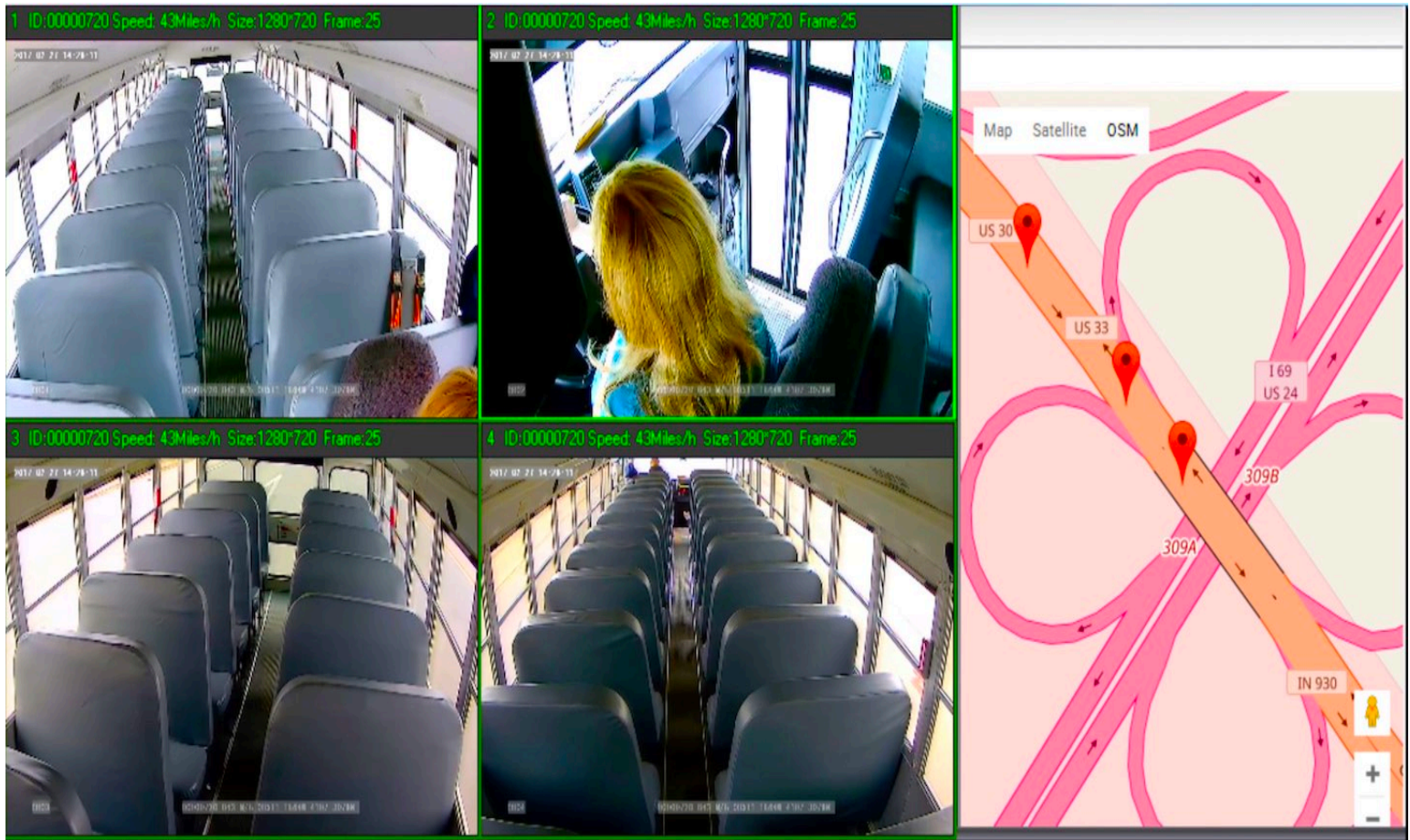
sales@AmericanBusVideo.com

10-Year Camera Warranty Standard

Testudo Lifetime System Warranty Available

30+ Years of Mobile Digital Sales & Service Experience

SD4HW w/GPS Quad view screenshots of the Video File Player with Vehicle ID#, Time/Date, Speed, GPS location stamped images for use in court if needed. OSM mapping selected with GPS breadcrumbs showing route taken.



SD4HW Night Vision IR LEDs active for recording in total darkness, OSM map setting GPS breadcrumbs showing route



SD4HW High Definition Road Facing camera, with IR LEDs disabled to prevent "ghosting" glare off windshield



SD4HW is Backwards compatible with Analog cameras sold over the last 25 years from FMI/ABV



Items	Parameters	Specifications Performance
Name	Product Name	SD4FHD, SD4FHW & SD4FHC
System	Operation System	Linux
	File System	Proprietary Format, error encryption
	System Privileges	User Password
Video	Video Input	4 channels 1080P-AHD, 720-AHD or 960H
	Video Output	2 Channel NTSC Output, 1.0Vp-p, 75Ω
	Video Display	1 Or 4 Screen Display
	Video Standard	NTSC: 30frames/Sec
	System Resources	NTSC: 120 Frames
Audio	Audio Input	Four Channels Independent Input 600Ω
	Audio Output	2 Channel (4 Channels Can Be Convert Freely)
	Basic Output Level	1.0—2.2V
	Distortion Plus Noise =	≤-30dB
	Recording Mode	Sound And Image Synchronization
	Audio Compression =	ADPCM
Digital Processing & Storage	Image Compression	H.264
	Image Format	NTSC: 4@720P (1280 x 720)
	Video Stream	CIF: 24K-112KByte/s; HD1 & D1: 24K-192KByte/s;
	Video Storage Consumption	CIF: 85M-394MByte / hour / channel D1: 85M-675MByte / hour / channel 720: 150M-675MByte / hour / channel
	Playback Resolution	NTSC: 4@1080p, 4@720p
	Audio Bitrate	96 KByte -192KByte / s / channel
	Audio Storage Consumption	14MByte / hour / channel
	SD Storage	Double 128GB SD card storage
	Image Quality	Eight Grades to Choose (1 is highest quality)
	Alarm	Alarm in
Alarm out		1 Channels output
Motion Detection		High, Medium, Low sensitivity adjustment
USB	Host Access	Option For USB Disk Backup
LAN	RJ45	Option RJ45 Ethernet Port for video monitoring
	Wi-Fi	Built in on SD4FHW & SD4FHC
	4G	Option HSPDA/EVDO/CDMA2000/FDD-LTE Module Inside
GPS	GPS	Built in on SD4FHW & SD4FHC
Extend Interface	RS232	Built in on SD4FHW & SD4FHC
	RS485	Option to connect with PTZ Camera
	Intercom	Built in on SD4FHC
	G-Sensor	Built in on SD4FHW & SD4FHC
	Canbus	Option to Expand Canbus on SD4FHW & SD4FHC
Others	Power Consumption	DC8-36V 8W without HDD
	Working Temperature	-20°C ~ +85°C (-4 to +185 Fahrenheit) >80%
	Clock	Built-In Clock, Calendar
Dimension	Product Size	6" (L) x 5.5"(W) x 1.75"(H)
	Product Weight	4 pounds

All DVR hardware specifications, features, and GUI features/representations are subject to change without notice. Those who use Wi-Fi or 4G LTE / 5G network features must provide their own in-house MCSA-trained staff to set up the network, program the DVRs, and maintain all aspects of the CMS server network. Memory storage is affected by FPS, resolution & number of cameras. PCs will not recognize SD card file format unless the dedicated video file Player Program is running on the PC in Administrator mode. Customers must know basic PC skills.

American Bus Video Inc.

Toll-Free 866-468-8042

AmericanBusVideo.com

sales@AmericanBusVideo.com

10-Year Camera Warranty Standard

Testudo Lifetime System Warranty Available

30+ Years of Mobile Digital Sales & Service Experience