

## 5<sup>th</sup> Wheel In-Cab Driver Safety Camera

Live Video in-Cab  
Driver Jaws Monitoring  
5<sup>th</sup> Wheel Risk Solution

**American Bus Video Inc.**

Toll Free 866-468-8042

[AmericanBusVideo.com](http://AmericanBusVideo.com)

[VehicleVideoCameras.com](http://VehicleVideoCameras.com)

[sales@AmericanBusVideo.com](mailto:sales@AmericanBusVideo.com)

D1 High Resolution  
Driver Event Marker  
100% Solid State DVR  
Key Locking Steel Cage

## “CS1 Spotter” 5<sup>th</sup> Wheel Driver Safety Camera

Built in Accident Sensor  
ExCAM Exterior Cameras  
4-Camera Recording DVR  
Dangerous Driver Charting



Road/Driver camera



5<sup>th</sup> Wheel Camera



## SS4 Industrial Grade DVR Extreme Environment Waterproof

**Testudo Lifetime System Warranty**



Industrial Grade IP67  
Waterproof Cameras  
Extreme Environment  
Applications

Yard truck trailer swapping applications require competent safety training on the specific models and types of equipment operated, as well as the focused attention by the trailer swapper operator to safely lock and secure the 5<sup>th</sup> wheel locking trailer King Pin and make certain the 5<sup>th</sup> wheel locking jaws are engaged and securely lock the trailer King Pin in position.

Switcher truck operators are often pressed for time and when rushed mistakes are common such as; High-Hook, jaws not locked, King Pins not engaged or Kingpins not securely locked prior to moving the tractor causing a trailer rollover or trailer hitting the ground damaging the trailer, due to unsecured trailer King Pin or locking jaws not fully engaged.

Tug tests by Switcher truck operators can fail to identify several problems such as King Pins not securely locked, faulty 5<sup>th</sup> wheel jaw lock sensor, visual inspection under low light or adverse conditions can be rushed and Switcher Operator error can result in costly damage to the trailer and the contents thereof.

### “CS1 Spotter” 5<sup>th</sup> Wheel Driver Safety Camera Can Help Reduce Damage & Costly Repairs:

- Reduce King Pin Damage from non-locked trailers (Less Downtime = Increased Productivity).
- Reduce Trailer Damage from High Hooks (Less Damage = Increased Productivity).
- Reduce 5<sup>th</sup> Wheel Damage (Less Tractor Downtime = Increased Productivity).
- Reduce Product Cargo Damaged by Dropped Trailers (Less Damage = Increased Productivity).
- Piece of Mind (Video Documentation = Management Verification & Oversight).

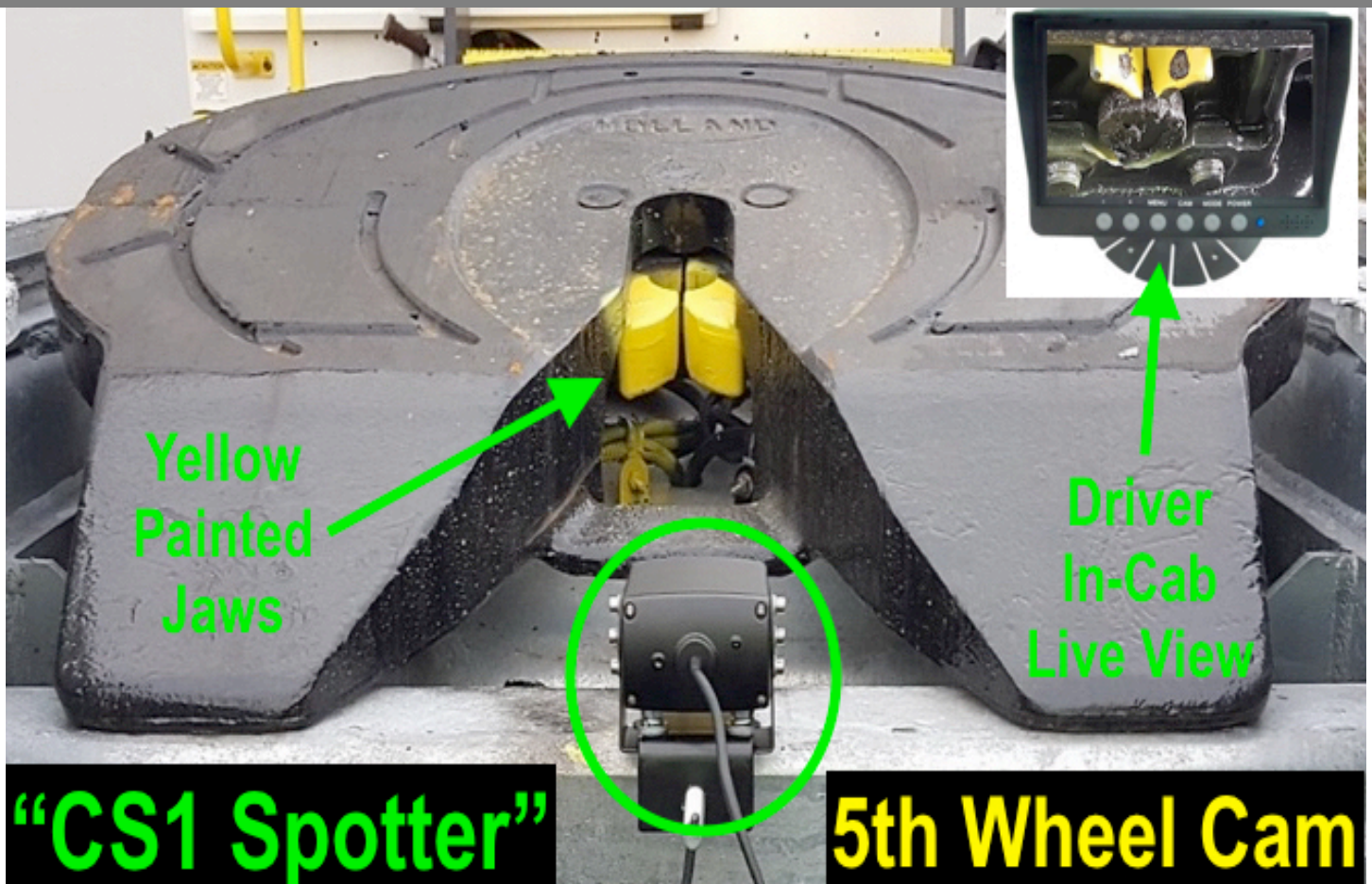
### “CS1 Spotter” Can Help Increase Operator Safety Accountability & Management Oversight:

- Enhance Operator Safety & Highlight Safety Concerns With Documented Video Record
- Conserve Fuel, Reduce Pollution / Carbon Footprint via Tractor Engine Idle Time Reduction
- Reduce Non-Productive Time, DVR Documents Vehicle Usage & Operator Activity
- Determine The Cause of Dumped Loads, To Help Prevent Future Swapping Accidents

[AmericanBusVideo.com](http://AmericanBusVideo.com)

Toll Free 866-468-8042

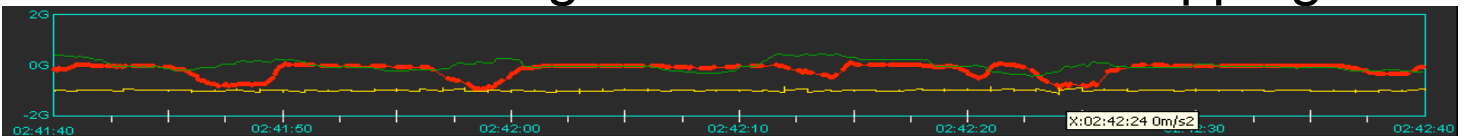
[sales@AmericanBusVideo.com](mailto:sales@AmericanBusVideo.com)



**SS4 DVRs incorporate Built-in 9-Axis Accelerometer & G-Force Sensor**



**Document Dangerous Yard Trailer Swapping**



**The SS4 “9-Axis G-Sensor” Documents Dangerous Trailer Swapping Operations:**

- Hard Braking recorded, distracted drivers may suddenly stop causing shift in lifted load, potential load loss due to damage.
- Hi-Speed Turns increase driver safety risks, increase liability, and risk company assets for trailer rollover accidents.
- Crash & Impacts recorded for review in case of accident or liability lawsuit whether driver reports them or not.



**Eco Friendly Trailer Swapping Operations Aspects:**

- Reduce Air Pollution & Employee Health Related Dangers by reducing unnecessary engine idling
- Reduce Company Fleet Carbon Footprint by reducing unnecessary wasted fuel during engine idling
- Reduce Water & Ground Pollution by helping prevent trailer rollover damage, liquid load spills & fluid leaks
- Lower Fuel Costs & Increase Profits by reducing unnecessary idle times

Note; Damage caused by excessive impact to 5<sup>th</sup> Wheel, may damage camera and is not covered under warranty.

[AmericanBusVideo.com](http://AmericanBusVideo.com)

Toll Free 866-468-8042

[sales@AmericanBusVideo.com](mailto:sales@AmericanBusVideo.com)