

Industrial Truck Camera Solutions



SS4 Mobile Video Solution

100% Solid State, Waterproof IP66, Lifetime Warranty

Testudo Lifetime System Warranty Available



SS4 1080P-AHD for those wishing Video & Audio w/o bells and whistles.

SS4GW 1080P-AHD w/GPS vehicle speed, On Screen Mapping, Wi-Fi Wireless Data Download.

Industrial Truck Vehicle Surveillance Features:

- 1080P High Definition Video & Audio from 4 cameras with Microphone
- 1TB SATA III SSD or 512GB SDXC 100% Solid State memory capacity
- WaterProof DVR, IP66 rated, High Security Key-lock & Locking Steel Faceplate
- Built in Accelerometer / G-Sensor documents Dangerous Driving Behaviors
- Waterproof Touchscreen Zoom Monitor & Driver Event Marker Button (Optional)

Industrial Truck Vehicle Surveillance Warranty:

- 10-Year Camera Warranty Standard
- Lifetime Memory Warranty Standard (SDXC only)
- "Testudo Lifetime System Warranty" (Optional)

Wireless Fork Lift Camera Options For High Lift or Order Picker

Wireless Easy Install			Wireless Easy Install
Rechargeable Battery			Rechargeable Battery
Magnet Base Mount			Magnet Base Mount
FLC-WRB Camera			FLC-WF Camera

All DVR hardware specifications, features, GUI features/representations, subject to change without notice. Those who use Wi-Fi network features must provide their own in house MCSA trained staff to setup the network, program the DVRs and maintain all aspects of the CMS server network. Sample images from lower resolution systems, actual image will be 2-4 times higher resolution.

*Testudo Lifetime System Warranty is optional. *10-Year Camera Warranty Excludes all Rechargeable batteries for Wireless cameras, Rechargeable Batteries have 1-Year Warranty.



Forward Forklift Mast View



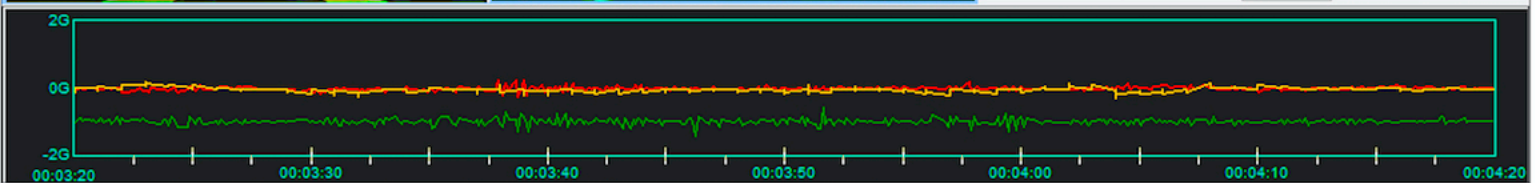
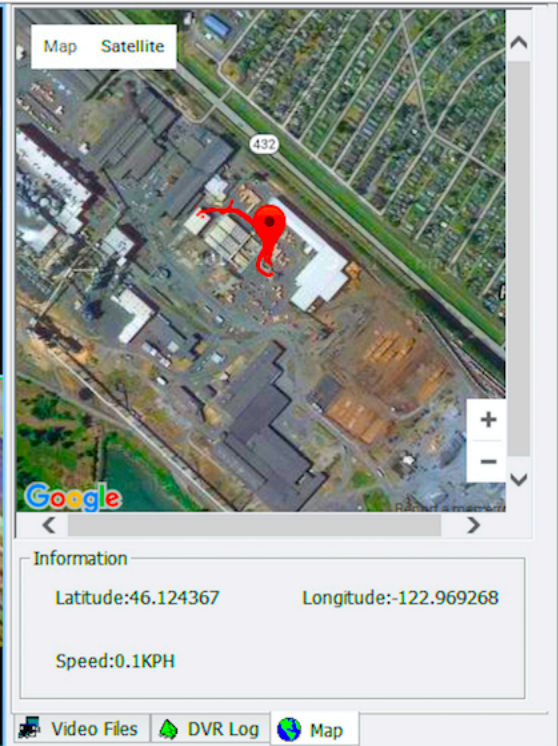
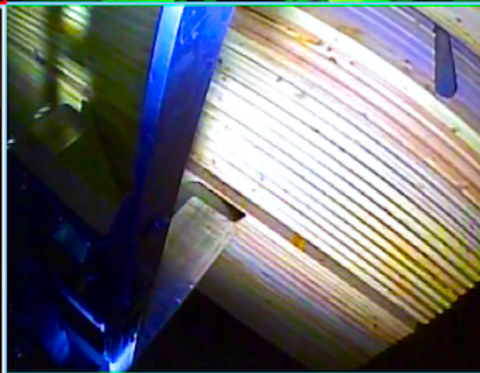
Forward Operator Mast Towers View



Rear View for Safe Backup



Quad View LCD Overhead Display



Item	Parameter	Specifications
System	Operating system	Linux
	Operating interface	Graphical menu operation interface(OSD)
	Video permission	Administrator & user setting
Video	Video input	4 x 1080P analog high definition
	CVBS output	1CH 6pin aviation connector output PAL/NTSC
	VGA output	1CH VGA output, 1080P
	Video display	1, 2, 3, 4
	Video standard	PAL: 25FPS, NTSC: 30FPS
	Compression	H.264 main profile
Audio	Audio input	4 channels
	Audio output	2 channels
	Record format	Synchronized video & audio recording
	Audio compression	ADPCM
Digital processing & storage	Image resolution	Max 4 x 1080P (1920 x 1080)
	Video bit rate	64kbps~4Mbps/channel
	Storage	56~2700MB/ (channel x hour)
	Audio bit rate	32kbps
	Storage	2.5 inch SATA SSD x 1, max 1TB; SD card x 1, max 128GB
Alarm	Alarm input	6 channels
	Alarm output	2 channels
	Motion detection	High/low/off sensitivity adjustable
Interface for communication	IR	1 channel
	RS232	1 channel
	RS485	1 channel
	CAN	2 channels
	RJ45	1 channel
	USB2.0	2 channels; 1 channel for copying file (SSD/ SD) and firmware upgrade 1 channel for copying SSD file (only for connecting to computer USB)
Wireless	2G/3G/4G	Optional
	Wi-Fi	Optional
GPS	Optional	Optional
G-Force Gyroscope	Nine axis sensor	Available
Software	Windows client	Available
	iOS client	Available
Power	Input	10~32V (Max Consumption 60W, Standby Consumption 100mW)
	Output	12V@3.5A

American Bus Video Inc.

Toll Free 866-468-8042

AmericanBusVideo.com

sales@AmericanBusVideo.com

10-Year Camera Warranty Standard

Testudo Lifetime System Warranty Available

30-Years of Mobile Digital Sales & Service Experience