

SS4, SS4GW & SS8 HD Player User Manual

Content

1	Local player software	2
1.1	Function and interface	2
1.2	Video Play	3
1.3	G-Sensor three-dimensional acceleration curve	4
1.4	GPS Map	4
1.5	Calendar	4
1.6	Video clipping	5
1.7	Video format conversion (MSV to AVI)	5
1.8	Page turning capability	5
1.9	Setting	5
1.10	Setup wizard	6

AMERICAN BUS VIDEO INC.
1160 Farming Rock Road
Chickamauga, GA 30707
Toll-Free 866.468.8042
Fax: 770.887.5944
AmericanBusVideo.com
VehicleVideoCameras.com
FleetDriverRiskManagement.com
30+ Years of Mobile Digital Sales & Service Experience

1 Local player software

1.1 Function and interface

● Function

The player can simultaneously play 8-channel video files with G-sensor three-dimensional acceleration, compartment temperature, speed and GPS information. The player supports to capture channel picture and the user can conveniently drag and drop any channel view.

Running track can be displayed on Google Map.

Calendar function supports to show whether or not the video is recorded within a month. Click on the calendar, and the video can be played from the time you click. User can easily check the video through this function.

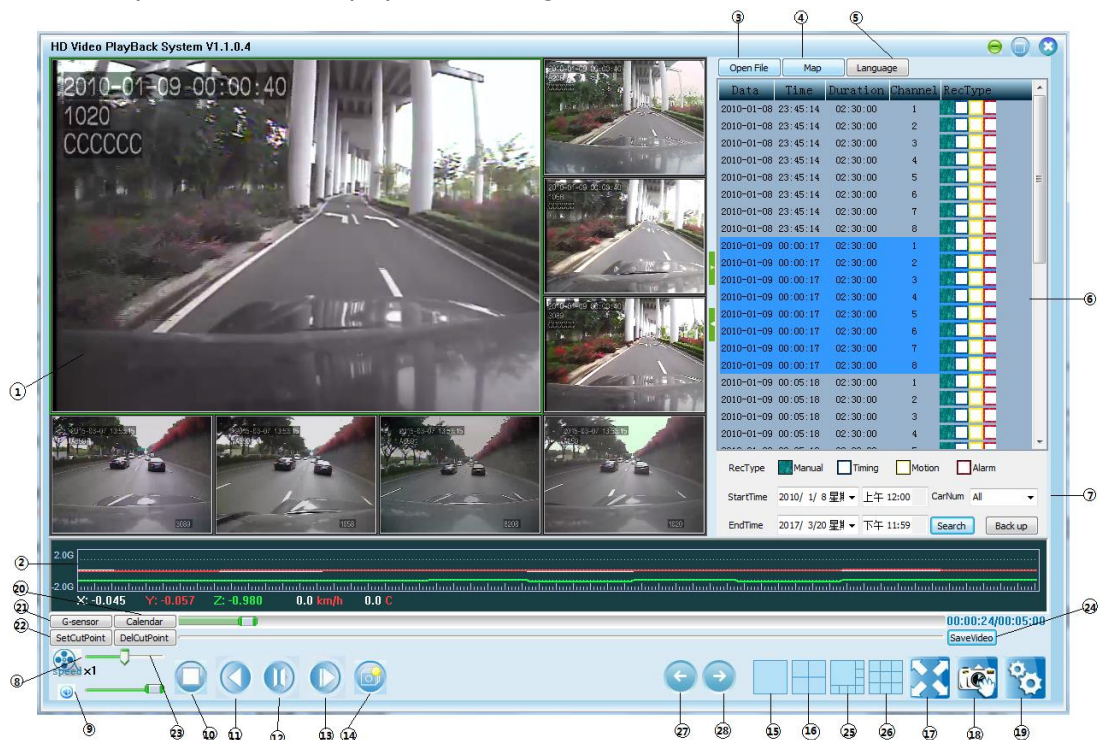
A video clip can be cut from the original video and saved in AVI file.

"MSV", which can save GPS, temperature and other data while saving the video, is our proprietary video file format. To convert to AVI format, user can use the method of video clip and select the whole video.

The player can run on Win10, Win8, Win7 and Windows XP.

● layer interface

Run "HDPlayer.exe", it will display the following interface:



① Video display area (8 split screens)

② G-Sensor display

③ Open file

④ Google map

⑤ Language switch

⑥ File list

⑦ File Search area

⑧ Speed: 1/16x ~ 16x

- ⑨ Volume
- ⑩ Stop
- ⑪ Pause
- ⑫ Play
- ⑬ Single frame play
- ⑭ Seconds play
- ⑮ Single screen
- ⑯ Four split screens
- ⑰ Full screen
- ⑱ Snapshot
- ⑲ Setting
- ㉔ Calendar
- ㉕ G-Sensor
- ㉖ SetCutPoint
- ㉗ DelCutPoint
- ㉘ SaveVideo
- ㉙ 8 split screens
- ㉚ 9 split screens
- ㉛ Previous page
- ㉜ Next page

1.2 Video Play

The player can play 8-channel AVI/MSV video files at 8 split-screens simultaneously. During playback, user can drag the video to any channel according to their habits. Settings of playback include speed, stop, pause, play, single frame play and seconds play.

- **Open file**

Click the "OpenFile" button and choose a file path, all video files under this directory will be listed in the file list.

Note: Don't change the video file's name.

- **File Search**

Search the video files within the scope of specified time, video type, license plate number etc.

E.g. in the search area, if choose manual and alarm recording type, start time as 2013-2-10 and end time as 2013-2-13, license number as A1234,

The screenshot shows a software interface for video playback and search. At the top, there are buttons for "Open File", "Map", and "Language". Below these is a table with the following columns: Data, Time, Duration, Channel, and RecType. The table contains 16 rows of search results. At the bottom, there are playback controls including a legend for RecType (Manual, Timing, Motion, Alarm), StartTime and EndTime fields with dropdown menus, a CarNum dropdown, and Search and Back up buttons.

Data	Time	Duration	Channel	RecType
2013-03-01	09:16:38	00:04:03	1, 2, 3, 4	Manual
2013-03-01	10:09:55	00:01:20	1, 2, 3, 4	Manual
2013-11-28	12:26:51	00:05:00	1, 2, 3, 4	Manual
2013-11-28	12:26:51	00:05:00	1, 2, 3, 4	Manual
2013-11-28	12:27:06	00:00:19	2	Manual
2013-11-28	12:27:06	00:00:19	2	Manual
2015-06-04	15:19:23	00:02:59	1, 2, 3, 4	Manual
2015-06-04	15:19:23	00:02:59	1, 2, 3, 4	Manual
2016-06-02	06:49:57	00:07:04	1, 2	Manual
2016-06-02	06:49:57	00:07:04	1, 2	Manual
2016-09-27	15:32:56	00:00:11	2, 3, 4	Manual
2016-09-27	15:33:07	00:00:16	2, 4	Manual
2016-09-27	15:33:23	00:00:16	2	Manual
2016-09-27	17:30:29	00:00:25	4	Manual
2016-09-27	17:30:54	00:00:14	3, 4	Manual
2016-09-27	17:31:08	00:00:15	2, 3, 4	Manual

RecType: Manual Timing Motion Alarm

StartTime: 2013/ 3/ 1 星期 CarNum: All

EndTime: 2016/ 9/27 星期

click the "search" button, all the recording files which meet the conditions will be displayed in the file list window.

- **Play**

Double-click the video file.

- **Snapshot**

During playback, press the "Snapshot" button to capture instant video images of the selected channel and save them to the default file path.

- **Single screen & multi screens**

During playback, it will change to single screen when you choose and double-click one channel. After double-click again, it will revert to multi screens(4/8/9 screens).

- **Drag and Drop**

Press and hold the left mouse button, drag a channel to the position of any other channels, and the two channels can be interchanged.

- **Audio**

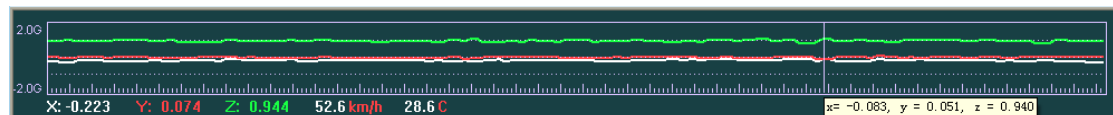
Specify the sound of one channel to be played. Setting method: In the video display area, click the right mouse button, select "Audio 1" on the pop-up context menu, then the audio of Channel 1 will be played.

1.1 G-Sensor three-dimensional acceleration curve

Display the x, y, and z axis acceleration. White line is x-axis, red line is y-axis and green is z-axis, which displays the current point to the x, y and z values.


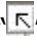
It can also display the cursor's x, y and z values.

Double-click G-sensor area, it will be enlarged, and easy to observe.



1.2 GPS Map

While playing a video with GPS data, click "Map" button, GPS routes on the Google map will show. Satellite mode map is recommended.

For easy viewing of videos and maps, the player supports 3-level window enlargement. If click the icon , the map will be enlarged, and if click the icon , the map will be maximized.

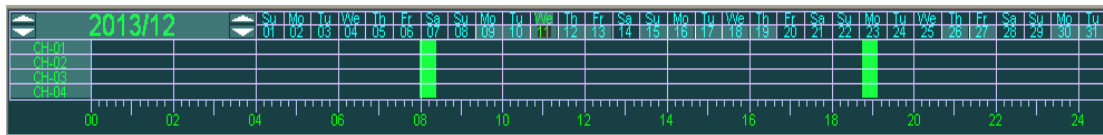
1.3 Calendar

Click on "Calendar" button to display calendar chart, select the month and year to display the DVR (4 channels) in the video of that month, the background color of those dates having video files will be grayed out; it can easily view video files date.

Click on one of the days, recording situation of the 4-channel DVR will be displayed on the chart. Move the mouse to the bottom hour zone of the calendar and click your left mouse button, you can zoom hour time bar.

Click on the calendar of the video, the video can be played from the time you click. User can

easily check the video this way.



1.4 Video clipping

A video clip can be cut from the original video and saved in AVI file.

During video playback or pause time, click "SetCutPoint" button to select the starting point, click "SetCutPoint" button again to select the end point, then a video will be selected. If you re-select it, click on "DelCutPoint" button to undo, and re-select. Click "SaveVideo" button to save the clipped video files in AVI format.



1.5 Video format conversion (MSV to AVI)

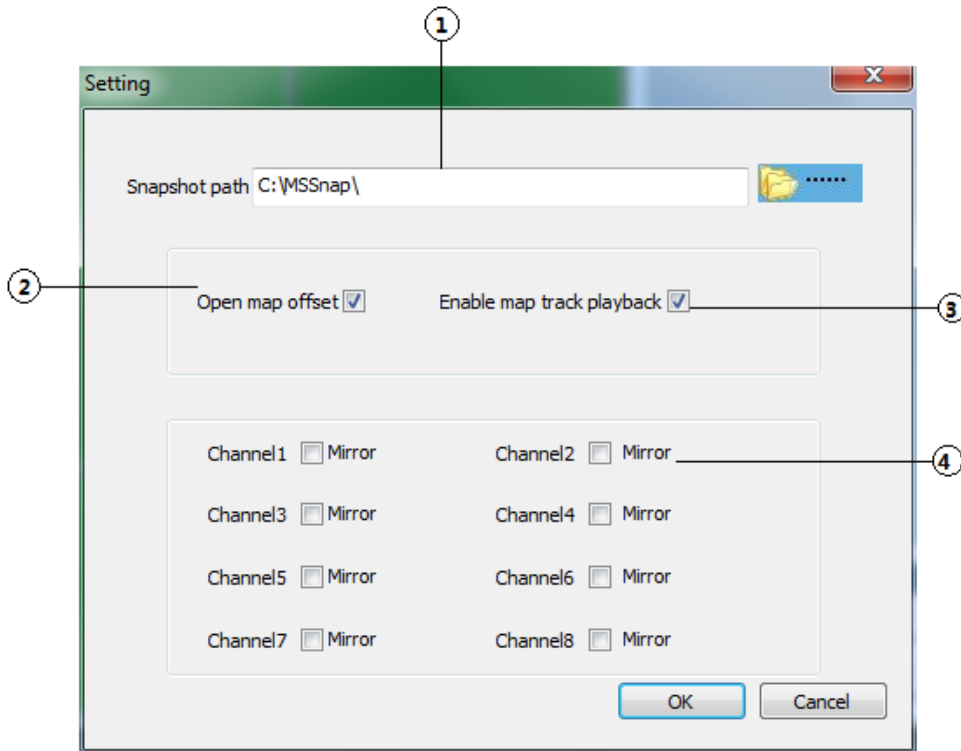
By video clipping function and select the whole video, click "Save Video" button, files will convert to AVI automatically.

1.6 Page turning capability

Page turning capability can be used under single screen or 4 split-screens. Under single screen, you can press "Previous page" to show the video of previous channel and press "Next page" to show the video of next channel. If under 4-screens, you can press "Previous page" to show the videos of previous 4 channels and press "Next page" to show the videos of next 4 channels. The first channel video will be displayed if you press "Next page" while playing the video of the last channel and vice versa. The same goes for 4 split screens.

1.7 Setting

- **Setting interface**



- ① Snapshot path
- ② Open map offset
- ③ Enable map track playback
- ④ Mirror image

● Setting introduction

Snapshot path: Determine the file path of the snapshot to be saved. The snapshot will be saved under this file path when you click "Snapshot" button on the main interface.

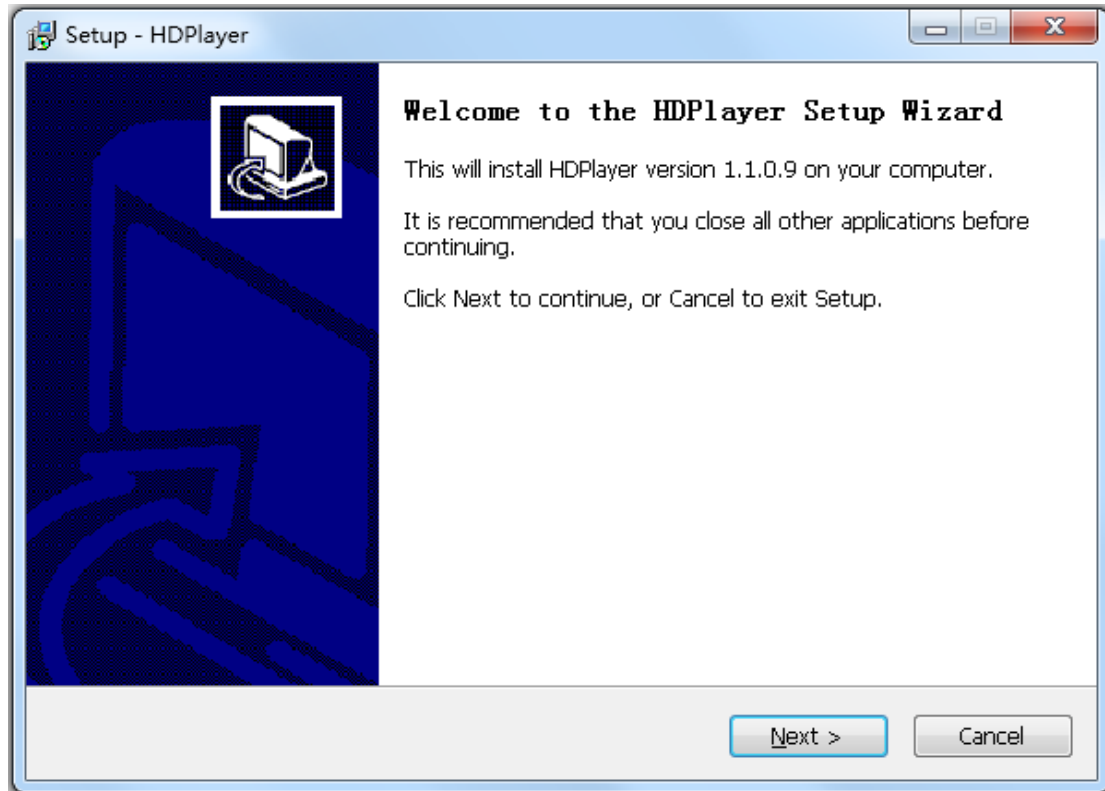
Open map offset: Map correction function is effective only in China, and invalid abroad. User need to open this function to gain precise location in China.

Enable map track playback: The map tracks of the videos on the file list will be displayed on the map when this function is on. During playback, the map route that has been passed and the map route that has not passed are displayed in different colors.

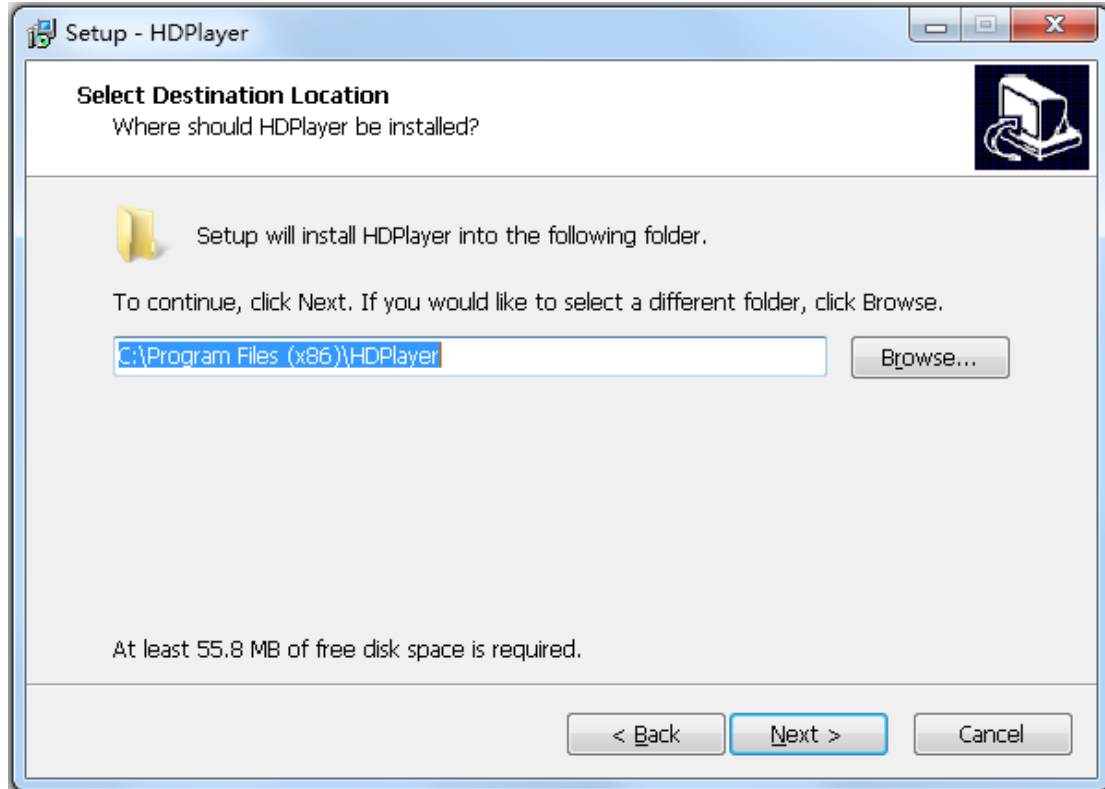
Mirror: After select the mirror checkbox of each channel, the original video image will be rotated 180 degrees along the axis perpendicular to the ground.

1.8 Setup wizard

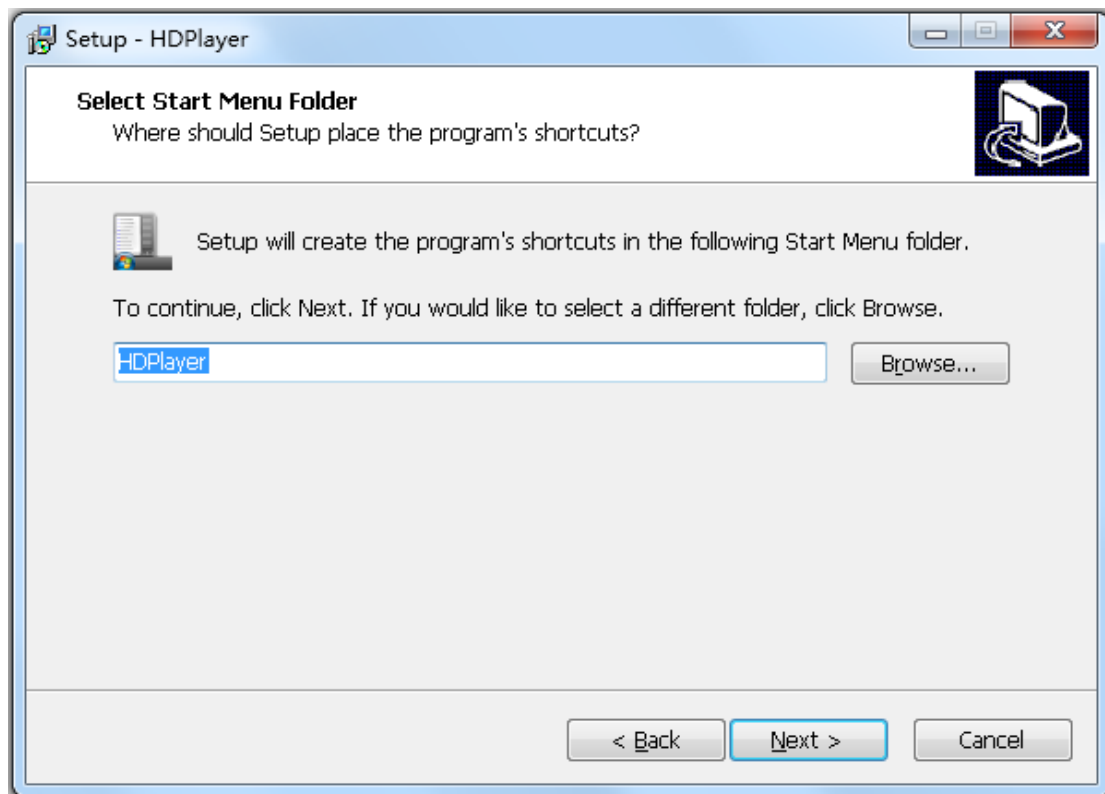
Please refer to the following illustration:



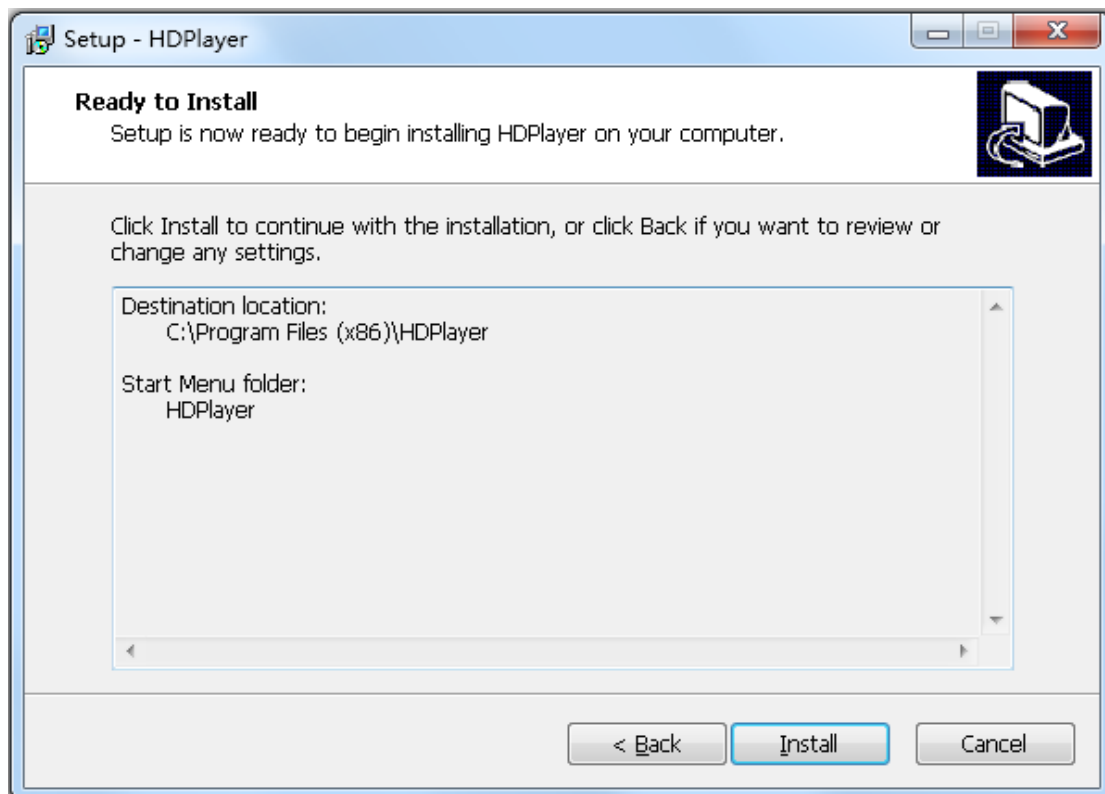
First step: Click "next" on the welcome interface.



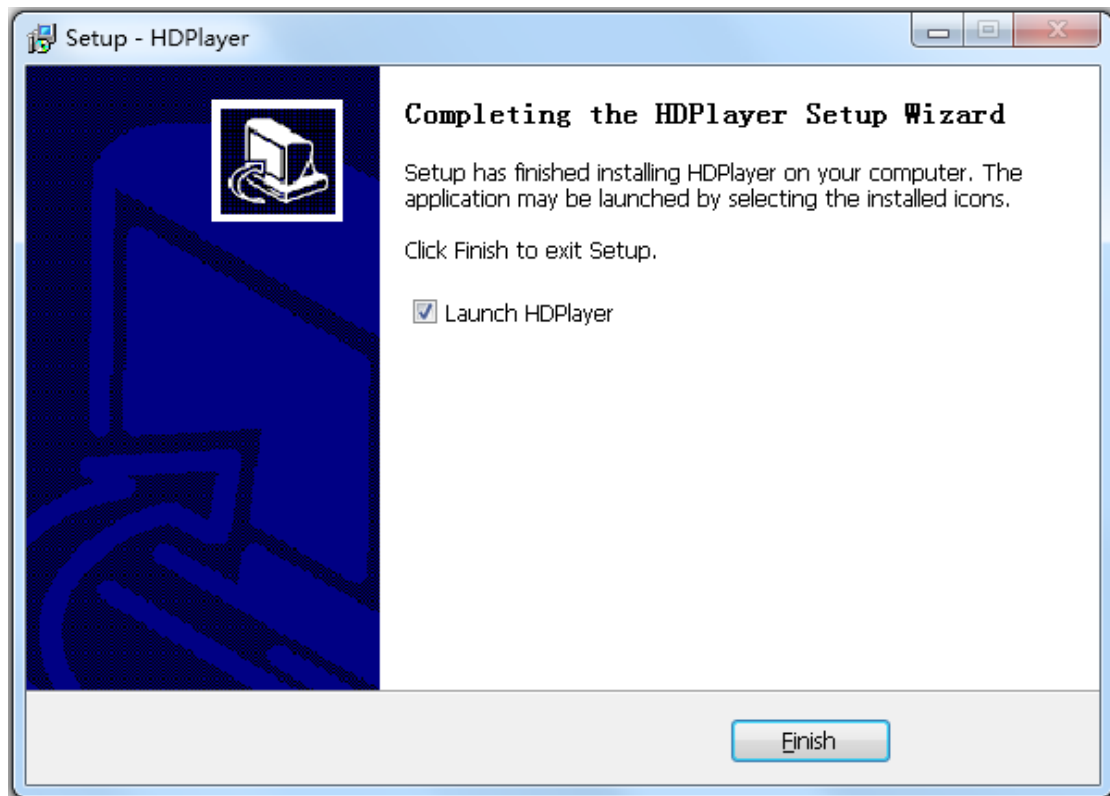
Second step: Click "Browse" to browse and choose installation folder.



Third step: Fill in the folder name, which will be shown on the Start Menu folder. Click "Don't create a Start Menu folder" if you don't need to create the shortcut. Click "Next".



Fourth step: Confirm the installation information that was previously set and click "Install".



Fifth step: If unselect the checkbox of "Launch HDPlayer", the program will not be run after finishing installation. If retain the checkbox, the program will be run after finishing installation. Click "Finish" to finish installation and click "HDPlayer.exe" to run the program.

AMERICAN BUS VIDEO INC.
1160 Farming Rock Road
Chickamauga, GA 30707
Toll-Free 866.468.8042
Fax: 770.887.5944
AmericanBusVideo.com
VehicleVideoCameras.com
FleetDriverRiskManagement.com
30+ Years of Mobile Digital Sales & Service Experience