

# 操作说明书

## Content

1	Function and interface .....	2
1.1	Function .....	2
1.2	Layer interface .....	2
1.3	Video Play .....	3
1.4	G-Sensor three-dimensional acceleration curv .....	4
1.5	GPS Map .....	5
1.6	Video clipping .....	5
1.7	Page turning capability .....	5
1.8	Setting .....	6
2	Install wizard .....	6

# 1 Function and interface

## 1.1 Function

- The player can simultaneously play 8-channel video files with G-sensor three-dimensional acceleration, compartment temperature, speed and GPS information. The player supports to capture channel picture and the user can conveniently drag and drop any channel view.
- Tracks can be displayed on a variety of maps.
- A video clip can be cut from the original video and saved in AVI file.
- The player can run on MacOS.

## 1.2 Layer interface

Run "HDPlayerX", it will display the following interface:



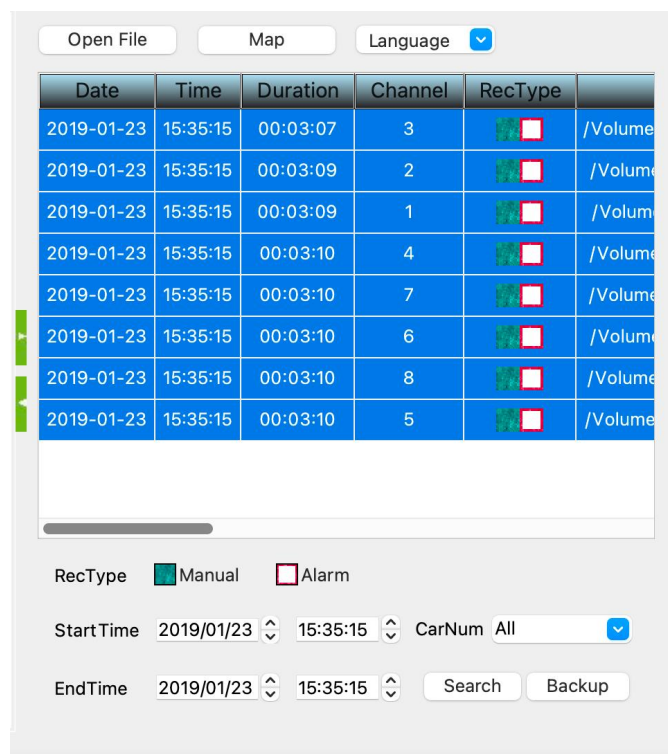
function Introduction:

- ①Open file
- ②Map: Used to view vehicle track information, etc., view details
- ③Language: At present, there are 4 languages, namely Chinese(中文), English (English), Japanese (日本語), Russian (Русский).
- ④File list
- ⑤File Search Area
- ⑥Video playback screen displays videos of a maximum of 8 channels. In the split mode, double-click a channel with the mouse to enter the single view display mode, and double-click

the single view again to return to the split display mode.

- ⑦ Acceleration data display interface
- ⑧ Add cropping point: Used to add the start and end point of the cropping video.
- ⑨ Video playback speed, 1/16x ~ 16x
- ⑩ Undo crop points: Used to undo added crop points.
- ⑪ Stop
- ⑫ Reverse/Pause: same as reverse video or pause reverse video.
- ⑬ Pause/Play: The same as pausing the current play or continuing the play.
- ⑭ Single frame playback
- ⑮ Seconds play
- ⑯ Previous page: Used to turn the page to a channel that is not currently displayed.
- ⑰ Next: Ibid.
- ⑱ Single window: After selection, the playback interface is displayed as a single screen.
- ⑲ Four Windows: After selection, the playback interface appears as a single screen.
- ⑳ Eight window: After selection, the playback interface appears as eight split screens.
- ㉑ Nine window: After selection, the screen appears as nine split screens.
- ㉒ Twelve Windows: After selection, the screen appears as 12 split screens.
- ㉓ Full-screen mode, you can use the ESC key to exit the full-screen mode.
- ㉔ Snap shot
- ㉕ Settings
- ㉖ Save video: Used to save the cropped video.

### 1.3 Video Play



function Introduction:

The player can play 8-channel AVI video files at 8 split-screens simultaneously. During playback, user can drag the video to any channel according to their habits. Setting of playback include speed, stop, pause, play single frame play and seconds play.

- **Open file**

Click the "OpenFile" button and choose a file path, all video files under this directory will be listed in the file list.

**Note: Don't change the video file's name.**

- **File Search**

Search the video files within the scope of specified time, video type, license plate number etc.

E.g. in the search area, if choose manual and alarm recording type, start time as 2013-2-10 and end time as 2013-2-13, license number as A1234, click the "search" button, all the recording files which meet the conditions will be displayed in the file list window.

- **Play**

Double-click the video file.

- **Snapshot**

During playback, press the "Snapshot" button to capture instant video images of the selected channel and save them to the default file path.

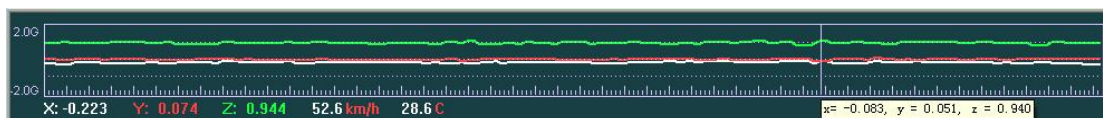
- **Single screen & multi screens**

During playback, it will change to single screen when you choose and double-click one channel. After double-click again, it will revert to multi screens(4/8/9 screens).

- **Drag and Drop**

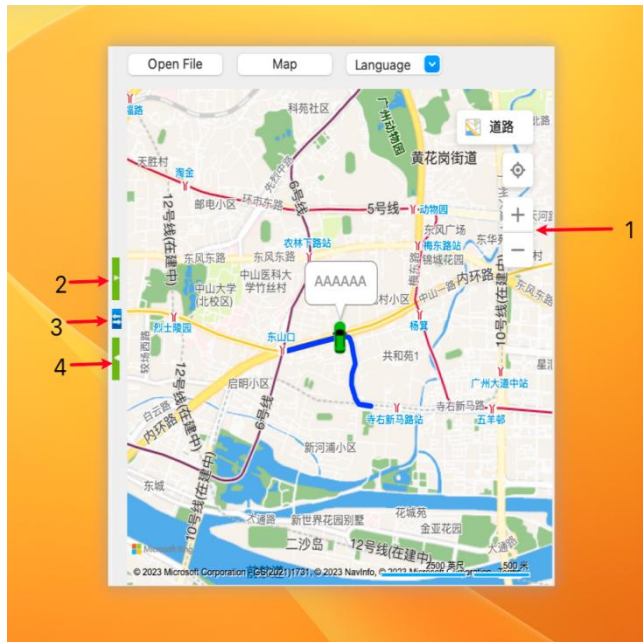
Press and hold the left mouse button, drag a channel to the position of any other channels, and the two channels can be interchanged.

#### 1. 4 G-Sensor three-dimensional acceleration curv



- The x, y, and z axis accelerations are displayed: the white line is the x axis, the red line is the y axis, and the green line is the z axis.
- When you place the mouse over a point, the values of x, y, and z are displayed as the preceding points.
- Double click the G sensor area, it will be enlarged and easy to observe; Double-clicking again will restore the normal state.
- There are also GPS speed and DVR device temperature displays.

## 1.5 GPS Map



function Introduction:

While playing a video with GPS data, click "Map" button, GPS routes on the map will show.

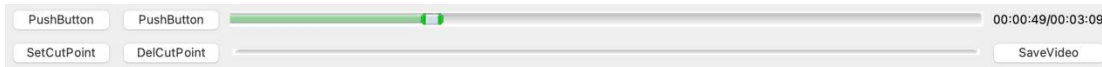
① For easy viewing of videos and maps, the player supports three-level window magnification. Click "+" to zoom in on an area and "-" to zoom in on an area.

② After clicking, the map returns to its normal state.

③ Click the icon "☰", Map and player interface will be replaced.

④ Once clicked, the map will be displayed in full screen.

## 1.6 Video clipping



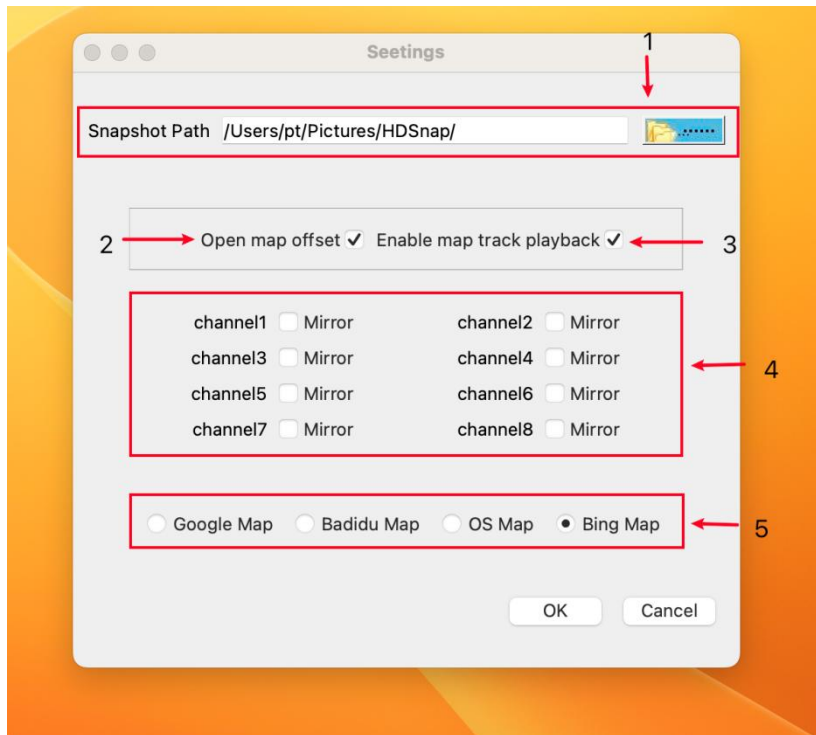
function Introduction:

- Video clips can cut sections from the original video and save them as AVI files.
- During the video playback, click the "Add Cropping Point" button to select the starting point, and click the "Add cropping Point" button again to select the end point. Clicking the "Save Video" button will save the clip video in AVI format.
- If you need to re-select the starting point or end point, you can click the "Undo cropping point" button to undo, and then re-select the point.

## 1.7 Page turning capability

- The page turning function can be used on a single screen or 4 split screens.
- On a single screen, you can press Previous to display the video of the previous channel, and press Next to display the video of the next channel.
- If you are under the 4 screen, you can press "Previous" to display the videos of the first 4 channels, and then "Next" to display the videos of the next 4 channels.
- If you press "Next" while playing a video from the last channel, the video from the first channel will be displayed, and vice versa. The same applies to four overflowing screens.

## 1.8 Setting



function Introduction:

①Snapshot path: Determines the file path of the snapshot to be saved. Click Snapshot on the home screen. The snapshot is saved in the file path.

②Enable map correction: Map correction only works in China, not abroad. Users need to turn this feature on to get a precise location in China.

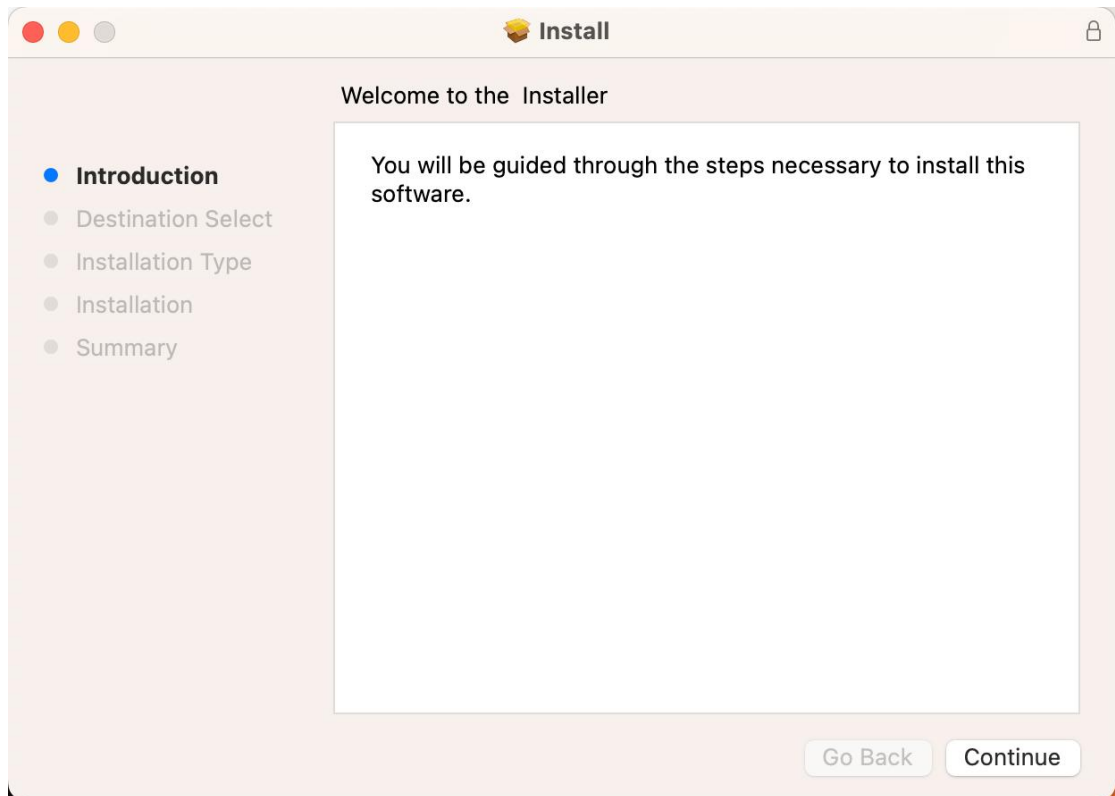
③启用地图轨迹回放：启用此功能后，文件列表中视频的地图轨迹将显示在地图上。在播放过程中，已通过的地图路线和未通过的地图路线将以不同的颜色显示。

④Enable Map track playback: When this feature is enabled, the map track of the video in the file list will be displayed on the map. During playback, the map routes that have been passed and the map routes that have not been passed will be displayed in different colors.

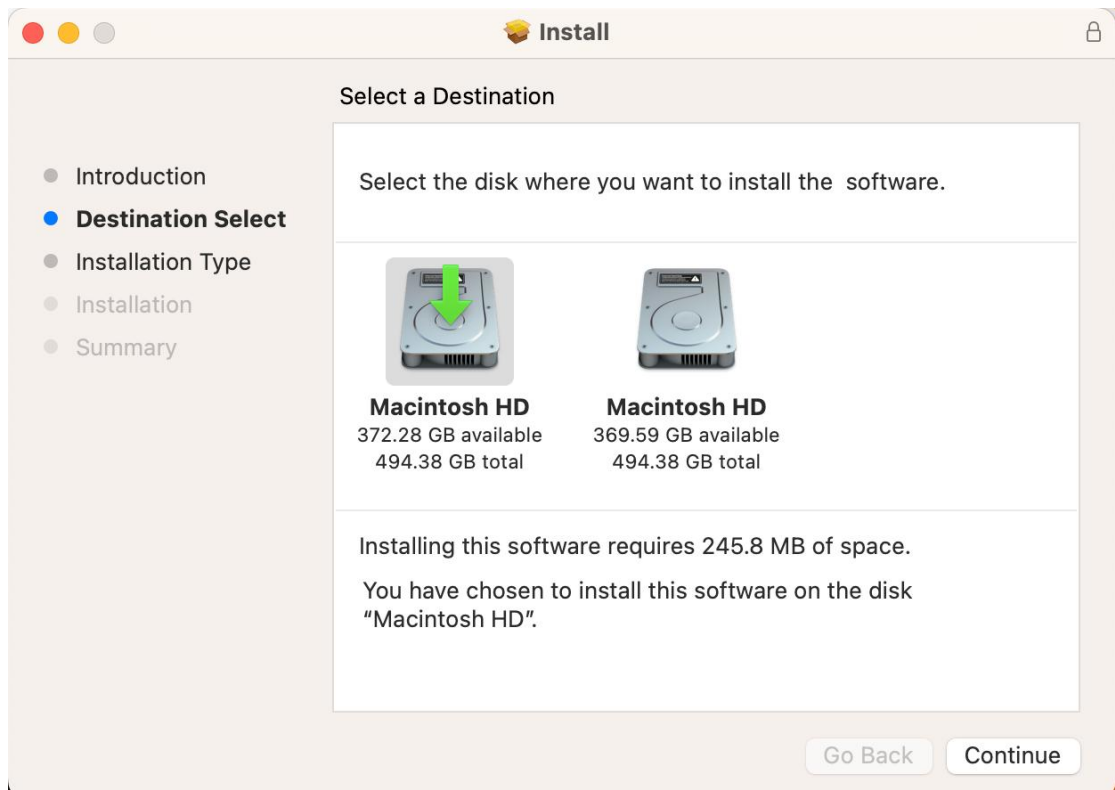
⑤Map switching: Google Maps use charges; Baidu map is mainly used in China, free; Recommended use of osm map, can be used at home and abroad, free; bing Maps charges for some features.

## 2 Install wizard

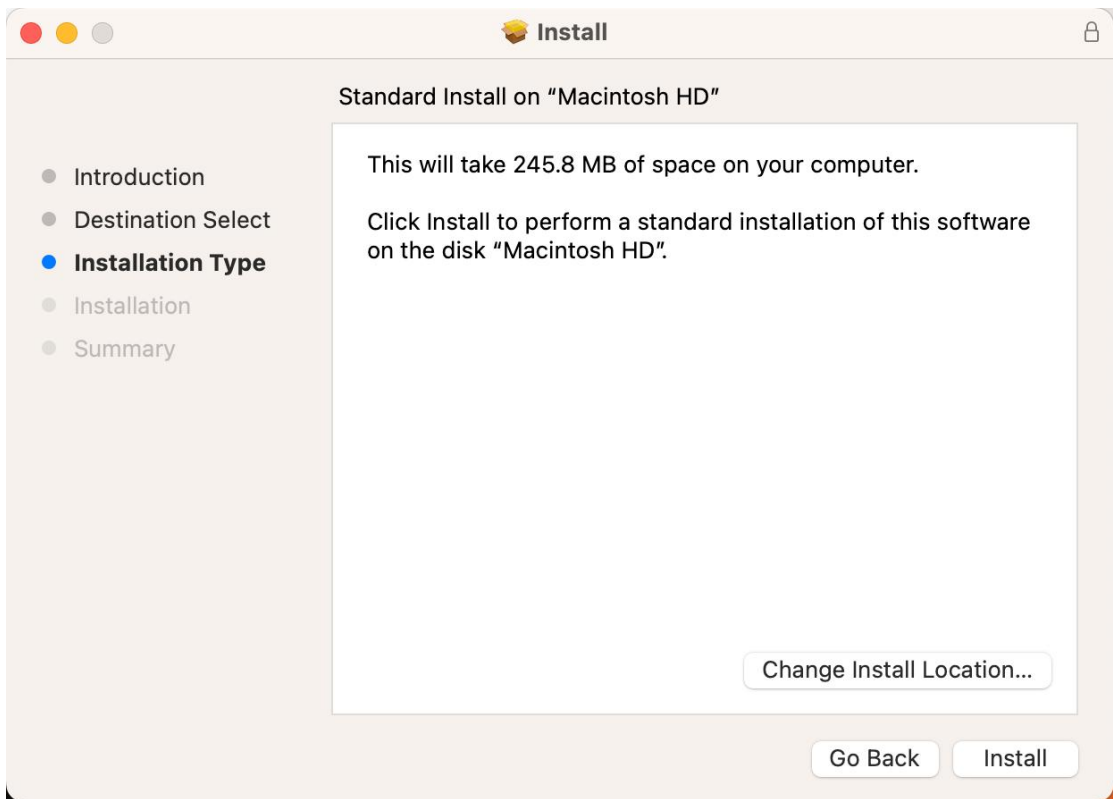
Step 1: Click "Next" on the welcome screen.



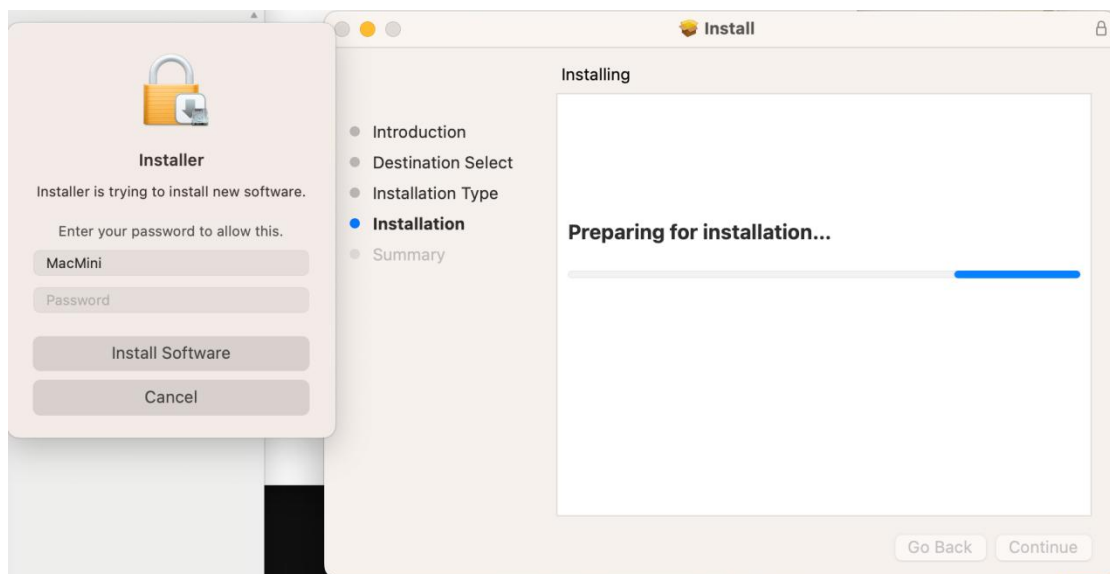
Step 2: If there are multiple disks, select the disk. Otherwise, this step is skipped.



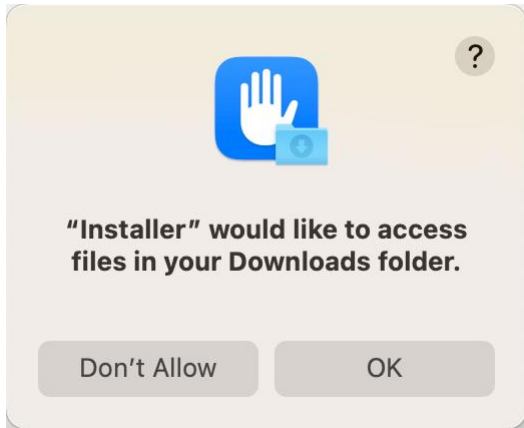
Step 3: Select the installation type and click Install.



Step 4: Complete the authorization as prompted.







Step 5: Complete the installation.

