

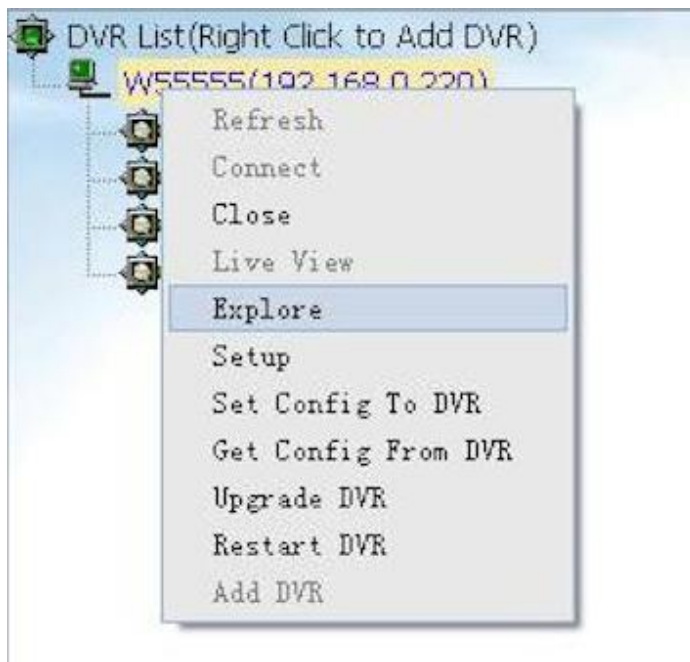
SD4mX ViewPro Wi-Fi Manual File Download

Some customers may wish to view files on the SD memory card and below is a simple way to access those files via the ViewPro software.

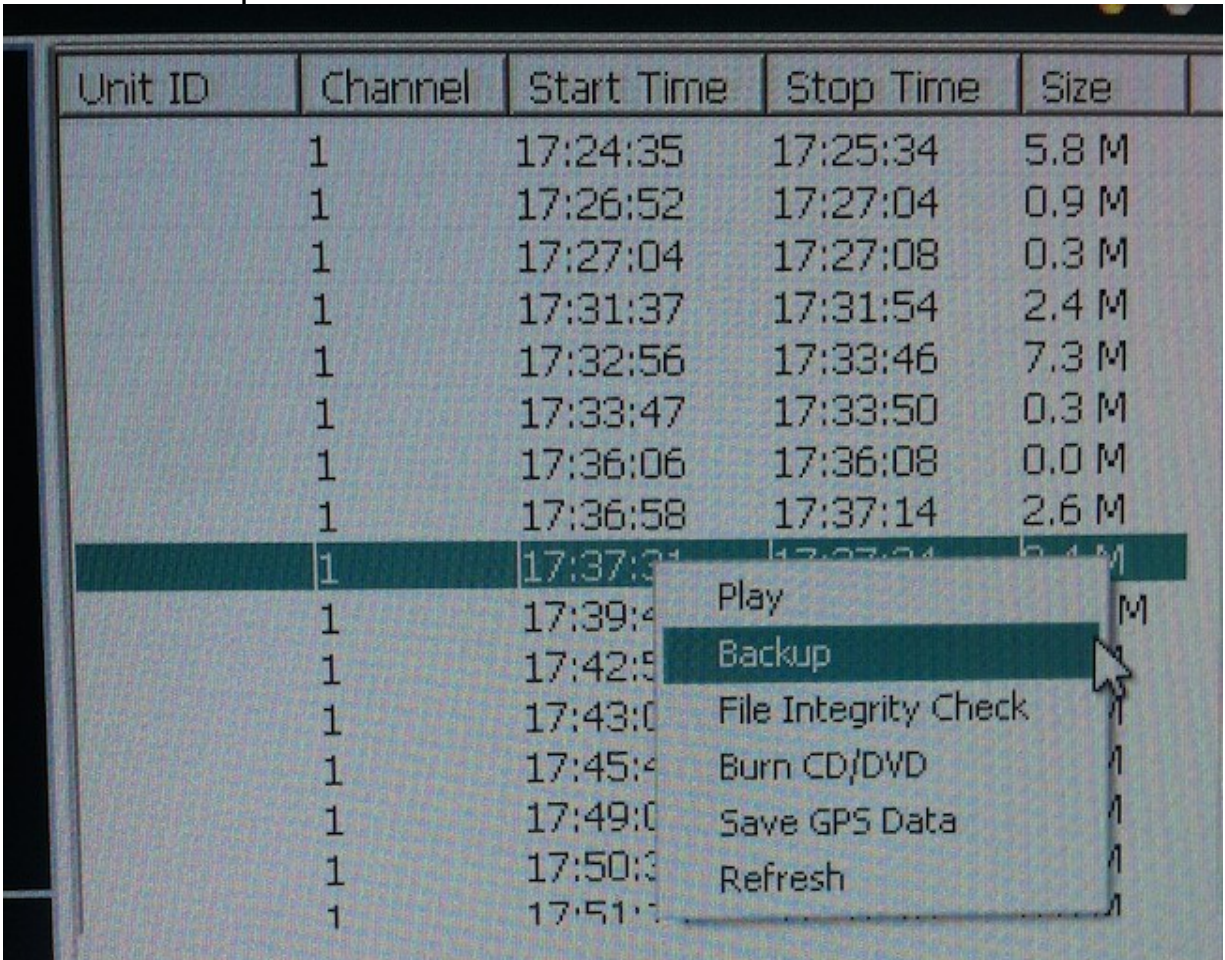
It is recommended by the manufacturer that each DVR be checked periodically to insure proper recording function and operational status to help insure that when the system is called upon to document or verify important events or criminal activities it will be functional.

ABV recommends all systems be function tested as often as weekly or as infrequently as monthly to help insure systems is fully functional when needed.

From ViewPro Vehicle List on the right, click on vehicle number/IP address, select EXPLORE from the pop up window:



Select file of interest by Channel Number aka Camera number, Start Time, Stop Time and click on the file of interest and from the popup wind select BACKUP to export file.



The screenshot shows a table with columns: Unit ID, Channel, Start Time, Stop Time, and Size. A row is selected, and a context menu is open over it. The menu options are: Play, Backup, File Integrity Check, Burn CD/DVD, Save GPS Data, and Refresh. The 'Backup' option is highlighted by the mouse cursor.

Unit ID	Channel	Start Time	Stop Time	Size
1	1	17:24:35	17:25:34	5.8 M
1	1	17:26:52	17:27:04	0.9 M
1	1	17:27:04	17:27:08	0.3 M
1	1	17:31:37	17:31:54	2.4 M
1	1	17:32:56	17:33:46	7.3 M
1	1	17:33:47	17:33:50	0.3 M
1	1	17:36:06	17:36:08	0.0 M
1	1	17:36:58	17:37:14	2.6 M
1	1	17:37:31	17:37:34	5.4 M
1	1	17:39:4		M
1	1	17:42:5		
1	1	17:43:0		
1	1	17:45:4		
1	1	17:49:0		
1	1	17:50:3		
1	1	17:51:1		

AMERICAN BUS VIDEO

2545 Valley Ridge Drive

Cumming, GA 30040

Tel: (770) 263-8118

Fax: (770) 887-5944

<http://www.americanbusvideo.com/>

<http://www.vehiclevideocameras.com/>

<http://www.fleetdriverriskmanagement.com/>

25 Years of Mobile Digital Sales & Service Experience