



Exterior Side & Rear View Cameras
IP67 rated with 360 degree camera rotation for Side View or horizontal applications

American Bus Video

2545 Valley Ridge Drive
Cumming, GA 30040
(770) 263-8118 (770) 887-5944 Fax
<http://www.AmericanBusVideo.com>
sales@AmericanBusVideo.com

25 years Mobile Digital Sales & Service Experience

100% Solid State
D1 High Resolution
Driver Event Marker
Built in G-Sensor

SD4mX

Fleet Driver Risk Safety Series
3-Axis Accelerometer G-Sensor

Automated Download
Wi-Fi Wireless Support
GPS Speed & Mapping
Dangerous Driver Charting



The SD4mX mobile vehicle DVR has no moving parts in the recording mechanism, making it 100% Solid State Digital. SD4mX DVR is incredibly small, can be mounted in very remote locations. The Driver Event Marker / DVR Status Indicator permits driver "marked" events to be quickly reviewed. This system offers unrivaled playback flexibility for Windows or Mac operating systems, as files are "AVI" format.

Leading Features Built Into SD4mX Fleet Driver Risk Safety Series Event Recorder w/Driver Alerts

- 128 GB 100% Solid State Digital memory capacity, Mobile DVR for rugged reliable data memory storage
- 4-channel DVR can accept up to 4 cameras with 4 channels of audio
- Built in Accelerometer & G-Sensor Charting documents Dangerous Driving Behaviors
- Active Driver Safety Alerts when they exceed safe driving thresholds
- Mosaic "Blurring" software to protect children identities during playback
- GPS Vehicle Speed & On Screen Mapping available on "SD4mXG" model
- GPS Time Synchronization & automatic Daylight Savings Time (DST) available on "SD4mXG" model
- USB 2.0 Port & Ethernet: 10/100M Base-T, RJ45 LAN port on face of DVR
- Wi-Fi Wireless compatible for Automated Data Download for those with Network MCSI in house
- AVI Video Files viewable on 3rd Party Players; VLC, MPlayerX & Windows Media Player w/codec plug-in
- Selectable Motion Detection permits conservation of memory if no vehicle activity sensed
- Apple Mac OSX or Windows PC AVI video file playback on AVPlayer or 3rd party Legacy players w/codec plug-in
- Driver Event Marker Button with Pre & Post Event video capture
- Remote DVR Status Indicator so driver can verify function when DVR mounted in hidden location
- Play the recorded AVI files back using the unit connected to TV, or SD card in PC w/codec plug-in
- D1 high resolution & H.264 compression for images 4 times clearer than CIF technology
- Locking Integral Security case (included) provides security for video evidence
- 10-Year Extended Warranty available on this 100% Solid State DVR
- Loyalty Reward DVR Upgrade Eligibility DVR Technology Upgrade for less than 1/2 cost of new DVR

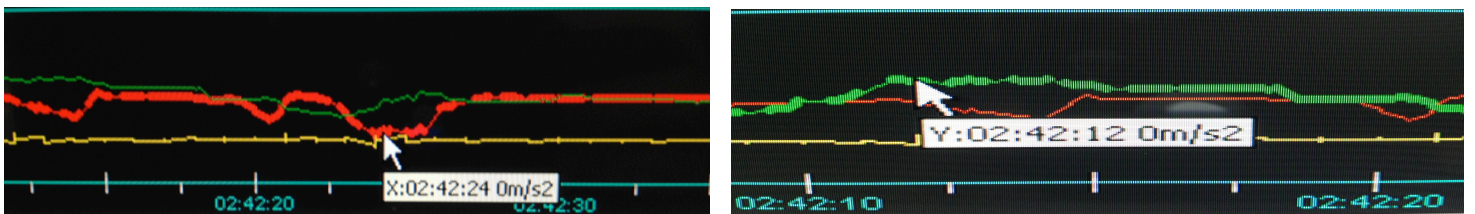
<http://www.AmericanBusVideo.com> 770-263-8118 sales@AmericanBusVideo.com

SD4mX incorporates Built in 3-Axis Accelerometer & G-Force Sensor

The screenshot shows the AVPlayer interface with multiple video feeds from a bus. The top-left feed shows the interior of the bus with passengers. The top-right feed shows the view from the driver's perspective looking out the front window. Below these are two more interior views from different angles. To the right is a table of video files with columns for Unit ID, Channel, Start Time, Stop Time, and Size. Below the table are search filters for location, date, and video type, along with a search button. At the bottom of the interface is a timeline and playback controls.

Unit ID	Channel	Start Time	Stop Time	Size
1	1	14:29:50	14:34:00	4.8 M
1	1	14:34:00	14:39:00	5.8 M
1	1	14:39:00	14:41:33	3.0 M
1	1	14:46:38	14:47:21	0.8 M
1	1	14:48:15	14:49:20	1.3 M
1	1	14:50:31	14:51:25	1.0 M
2	2	14:29:51	14:34:00	4.9 M
2	2	14:34:00	14:39:00	5.9 M
2	2	14:39:00	14:41:34	3.0 M
2	2	14:46:39	14:47:21	0.8 M
2	2	14:48:16	14:49:21	1.3 M
2	2	14:50:31	14:51:25	1.1 M
3	3	14:29:51	14:34:00	4.9 M
3	3	14:34:00	14:39:00	5.9 M
3	3	14:39:00	14:41:35	3.0 M
3	3	14:46:39	14:47:21	0.8 M

The "SD4mX" provides sequential impartial documentation of potential dangerous driving behaviors that can adversely affect your fleet equipment investment or drivers safety and help provide a driver risk management safety tool that can be used to highlight and document Dangerous Driving Behaviors.

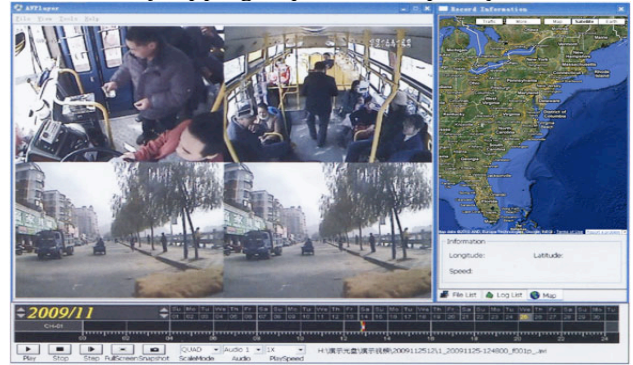


The SD4mX "3-Axis G-Sensor" Documents Dangerous Driving Behaviors:

- Hard Braking recorded, distracted drivers potentially violate Federal DOT Safe Driving Mandate, (Documented on inertia charting & audio alerts driver to enhance driver safety and remind driver not to follow closely)
- Dangerous Hi-Speed Turns increase driver safety risks, increase liability, and risk company assets, by greatly increasing the risk of accidents. (Documented & audio alerts driver to enhance driver safety and remind driver not to take turns too fast)
- Crash & Impacts recorded for review in case of liability lawsuit whether driver reports them or not. (Documented & audio alerts driver to enhance driver safety and remind driver when the vehicle impacts items)

SPECIFICATION					
	ITEM	1CH SDVR	2CH SDVR	4CH SDVR	
VIDEO	VIDEO INPUT	1 channel	2 channels	4 channels	
	VIDEO OUTPUT	1 channel, 1.0V, p-p, 75Ω, BNC			
	VIDEO FORMAT	Support PAL/NTSC			
	VIDEO COMPRESSION	H.264 High Profile			
	RECORD RESOLUTION	720x576(PAL)/ 720x480(NTSC)	1280x512(PAL)/ 1248x416(NTSC)	1280x1024(PAL)/ 1248x832(NTSC)	
	FRAME RATE	25fps(D1 PAL) 30fps(D1 NTSC)	50fps(D1 PAL) 60fps(D1 NTSC)	100fps(D1 PAL) 120fps(D1 NTSC)	
	VIDEO BITRATE	660Kbps ~ 1.5Mbps, 4 level video quality	1.32Mbps ~ 3Mbps, 4 level video quality	1.98Mbps ~ 4.5Mbps, 4 level video quality	
AUDIO	AUDIO INPUT	1 channel	2 channels	4 channels	
	AUDIO INPUT FORMAT	20KΩ, RCA			
	AUDIO OUTPUT	1 channel, 500Ω, RCA			
	AUDIO LEVEL	1V ~2V, p-p			
	AUDIO COMPRESSION	G.711			
STORAGE	STORAGE	SD card, external USB device (memory stick or hard drive)			
	FILE FORMAT	AVI			
INTERFACE	SENSORS	1 speed sensor, 1 ignition sensor, 3 sensors for brake, return etc.			
	COM PORT	2 RS232 port, 1 RS485 port			
	NETWORK	RJ45, 10M/100M Ethernet			
	GPS	Support GPS receiver (optional), Synchronize the DVR system time with GPS automatically, can record GPS information along with video and audio. GPS data format: NEMA0183, Baudrate: 4800bps			
	PLAYER	Specially designed player for the DVR			
SOFTWARE	THIRD PARTY SOFTWARE	Windows Media Player(Ver 11.0 or above), VLC Media Player(Ver1.0.0 or above)			
	POWER	INPUT POWER: From +8VDC to +32VDC POWER OUTPUT: DC, +12V@1.5A, +5V@1A POWER CONSUMPTION: Working power: <5W, Stand by power: 0.1W (exclude camera, SD card, monitor)			
OTHER	WORKING TEMPERATURE	From -30°C ~ +60°C			
	SIZE	12cm X 9cm X 2cm (4.75" x 3.5" x 0.8")			
	WEIGHT	0.3KG			
	PACKAGE SIZE AND WEIGHT	21cm X 14cm X 7.5cm (8.3" x 5.5" x 3.0"), 0.63KG			

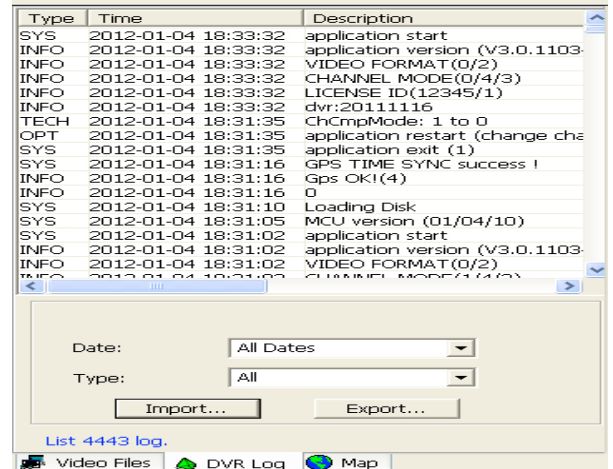
Video Player w/GPS On Screen Mapping (Mapping requires GPS option)



Transit Bus Screenshot w/600 TVL hi-res cameras



Taxi Screenshot w/600 TVL hi-resolution cameras



DVR Logs



Driver Event
Marker Button

GPS Antenna
Speed & Mapping

PD Camera 600TVL
Night Vision & Audio

All DVR specifications, features, GUI, hardware subject to frequent change by the manufacturer without notice as improvements are integrated. Some versions of Third Party Players require AVI codec plug-in to enable AVI file playback. Wi-Fi Wireless compatible with backend Client software that permits Automated Data Download as long as your in house network administrator manages install, setup and maintenance for system. ABV provides no CMS server installation support, no CMS server setup support, no training or technical support in the use or operations of any customer Wi-Fi network, or CMS software program provided. Memory storage drastically affected by FPS, resolution & number of cameras.

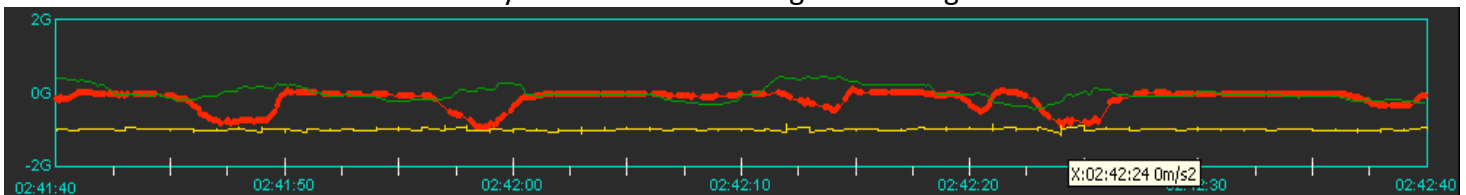
Quad Cam View, Dual Cam View & Single Camera Full Screen View, with & w/o Mapping available

The screenshots demonstrate the AVPlayer software interface in various configurations:

- Top Left:** Single front camera view showing a road with a speed of 18.2MPH. Includes a map inset and playback controls.
- Top Right:** Dual camera view showing both the front road and the driver. Speed is 53.9MPH. Includes a map inset and playback controls.
- Bottom Left:** Single front camera view with a map inset. Speed is 4.5MPH. Includes playback controls.
- Bottom Right:** Quad camera view showing front, driver, rear, and map views. Speed is 9.9MPH. Includes playback controls.

⚠ Stop Dangerous Fleet Driving Behavior Now ⚠

Without Monthly Cellular Service Charges & Managed Solution Fees



American Bus Video Inc. (770) 263-8118

DriverSafetyCameras.com

FleetDriverRiskManagement.com

25 Years of Fleet Driver Safety System Sales & Service Experience

All Rights Reserved. © American Bus Video Inc. 2013