

# SD4HDE / SD4HWE / SD4HCE



**SD4HDE** 1080P-AHD for those wishing Video & Audio w/o bells and whistles.

**SD4HWE** 1080P-AHD w/GPS vehicle speed, On Screen Mapping, Wi-Fi Wireless Data Download.

**SD4HCE** Live View Video Streaming GPS vehicle speed, On Screen Mapping, Wi-Fi Wireless Data Download.

## Best Value School Bus Camera Features:

- **10-Year Camera Warranty Standard**
- **Lifetime Memory Warranty Standard**
- **“Testudo Lifetime System Warranty” (optional)**
- **Free Stop Arm Camera Upgrade for School Bus Stop Arm violation**
- **512GB 100% Solid State memory capacity**
- **4, 8 & 12 Camera Modular Solutions for 100% Solid State Reliability**
- **Built in Accelerometer / G-Sensor documents Dangerous Driving Behaviors**
- **High Definition 1080P Video from 4, 8 or 12 camera modular systems**
- **Backwards Compatible with 30 years of Analog cameras sold by FMI/ABV**

**American Bus Video Inc.**

Toll Free 866-468-8042

[AmericanBusVideo.com](http://AmericanBusVideo.com)

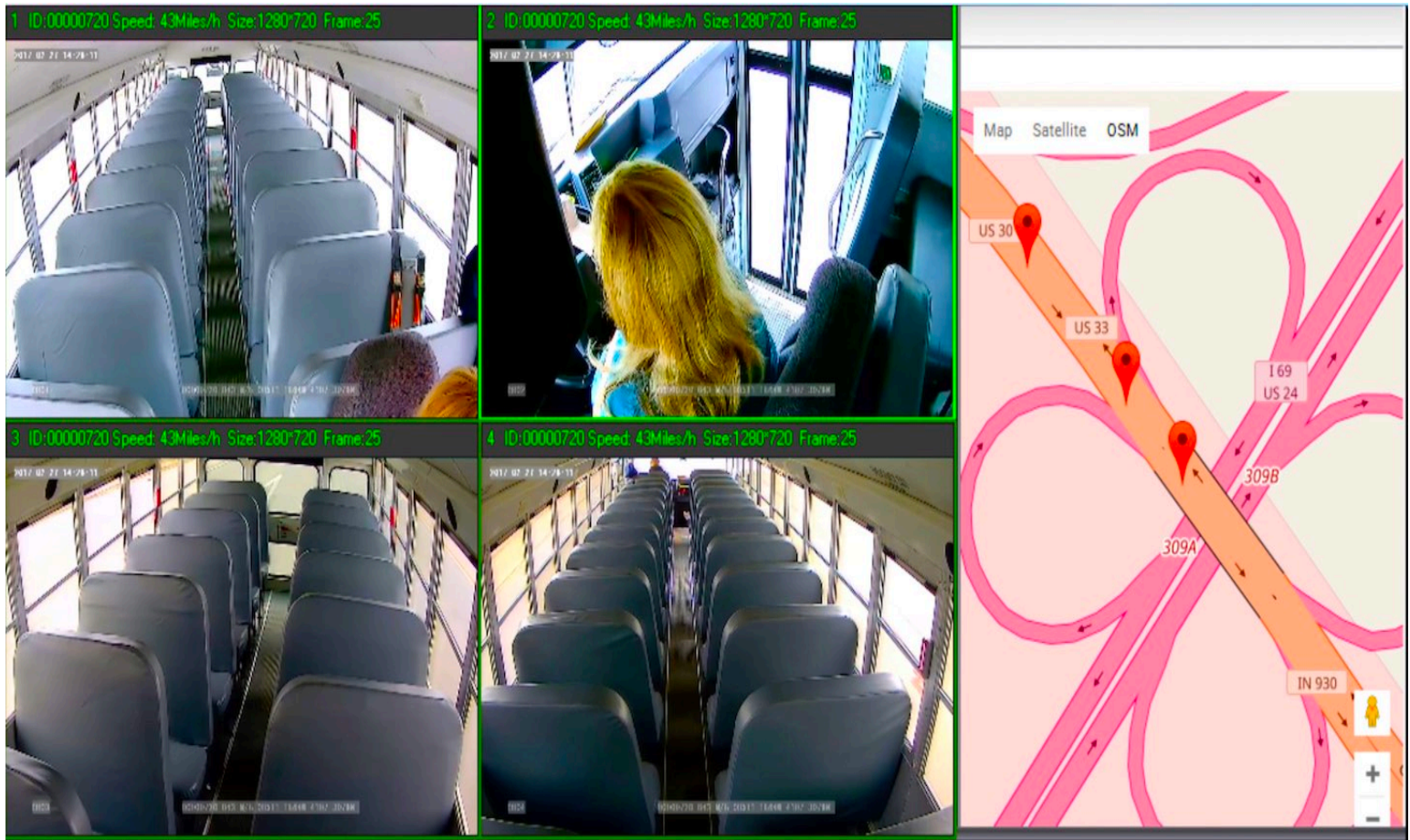
[sales@AmericanBusVideo.com](mailto:sales@AmericanBusVideo.com)

10-Year Camera Warranty Standard

Testudo Lifetime System Warranty Available

30+ Years of Mobile Digital Sales & Service Experience

SD4HW w/GPS Quad view screenshots of the Video File Player with Vehicle ID#, Time/Date, Speed, GPS location stamped images for use in court if needed. OSM mapping selected with GPS breadcrumbs showing route taken.



SD4HW Night Vision IR LEDs active for recording in total darkness, OSM map setting GPS breadcrumbs showing route



# SD4HW High Definition Road Facing camera, with IR LEDs disabled to prevent "ghosting" glare off windshield



SD4HW is Backwards compatible with Analog cameras sold over the last 25 years from FMI/ABV



## Specifications

| ITEM                       | PARAMETER                | PERFORMANCE  |
|----------------------------|--------------------------|--|
| System                     | Language                 | English  |
|                            | Operation System         | Linux  |
|                            | Interface                | Imaging menu operation interface (OSD Menu)                            |
|                            | Password Security        | Two levels authority: admin, user                                      |
| Video                      | Video Input              | 4 composite video input  |
|                            | Video Output             | 1 composite video & 1 VGA outputs                                      |
|                            | Video standard           | PAL, NTSC  |
|                            | Video compression        | H.264/H.265 Main profile, 100 /120 frame / sec                         |
| Audio                      | Video Display            | Single/Quad screen video   |
|                            | Audio Input              | 4 audio input  |
|                            | Audio Output             | 1 audio output   |
|                            | Audio Code               | G726/G711A   |
| Image Processing & Storage | Way of recording         | Simultaneous AV recording  |
|                            | Image format             | D1/720p/1080p optional   |
|                            | Standard of Video Stream | ISO14496-10  |
|                            | Video code rate          | D1: 2048Kbps ~ 400Kbps,  |
|                            |                          | 720p: 2048Kbps ~ 4096Kbps,   |
|                            |                          | 8 levels of image quality: class 1 the highest and class 8 the lowest. |
|                            | Audio Code Rate          | 40KB/s   |
| Data Storage               | 2x 256GB SD Card         |  |
| Alarm                      | Alarm input              | 4x Alarm input   |
|                            | Alarm output             | 2x Alarm output, with 12V high electrical level                        |

|                     |  |   |
|---------------------|--|---|
| Communication Port  | RS232 port                                     | 1x RS232  |
|                     | RS485 port                                     | /   |
|                     | 4G LTE   | optional, support TD-LTE/FDD-LTE  |
|                     | WIFI   | optional, 802.11b/g/n   |
|                     | GPS  | Optional, embedded module, show Geo-location, speed etc. Wireless upload function (Optional)      |
| Acceleration sensor | G-sensor                                       | Built-in 6 axis   |
| Extendable Port     | Intercom                                       | support   |
|                     | Speed pulse                                    | External connect  |
|                     | Others   | LED panel   |
| Software            | Vehicle Network Management System (VNMS / CMS) | 4G video monitoring and GPS tracking etc. PC/ Web/Android/iPhone/iPad platforms, multi-languages. |
|                     | Vehicle Analysis Software (VAS)                | Video playback and analysis   |

## Working Parameters

| Item                  | Parameter   | Instruction  |
|-----------------------|-------------|--|
| Power Input           | +8V~+36V    | Voltage Input: +8V~+36V<br>Power will be auto off upon self-protection activated if device is out of this range for long time. |
| Power Output          | 12V         | Voltage output 12V (+/-0.2V 0), current for max. 4A  |
| ACC                   | ≤6V         | ACC Off  |
|                       | ≥7.5V       | ACC On   |
| Video Input Impedance | 75Ω         | Average 75Ω per video channel  |
| Video Output Voltage  | 2V p-p      | 75Ω per each 2V p-p CVBS signal  |
| I/O Interface         | 0-4V        | Defined as low level alarm   |
|                       | > 4V        | Defined as high level alarm  |
| SD Card Interface     | 2x SD slots | Max. 256GB per SD card<br>SD can be used for recording, upgrade etc.   |
| Working Temperature   | -30°C~+75°C | Temperature in well ventilated condition   |

All DVR features, GUI features/representations are of older SD4H 720P platform this new SD4HDE / SD4HWE product replaced, all specifications and Video Playback GUI representations are subject to change without notice. Those who use Wi-Fi or 4G LTE / 5G network features must provide their own in house MCSA trained staff to setup the network, program the DVRs and maintain all aspects of the CMS server network. Memory storage affected by FPS, resolution & number of cameras. PCs will not recognize SD card file format unless the dedicated video file Player Program is running on the PC in Administrator mode. Customer must know basic PC skills.