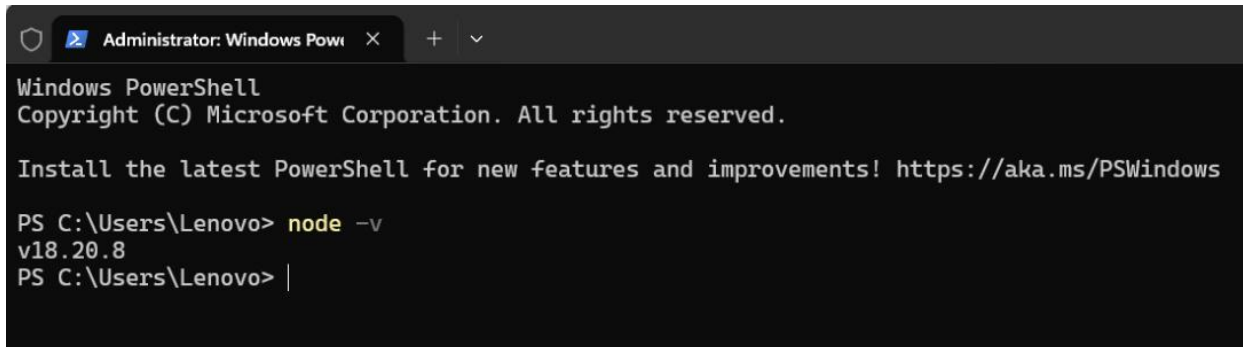


Playback Tool Operation Manual

1. Check if **node.js** is installed on your computer

Run command prompt as administrator and enter **node -v** inside the command line.

- If no version number or other content is displayed, need to install node.js first, refer to step 2
- If the version number appears, it means node.js has been installed. Skip step 2



```
Administrator: Windows PowerShell
Copyright (C) Microsoft Corporation. All rights reserved.

Install the latest PowerShell for new features and improvements! https://aka.ms/PSWindows

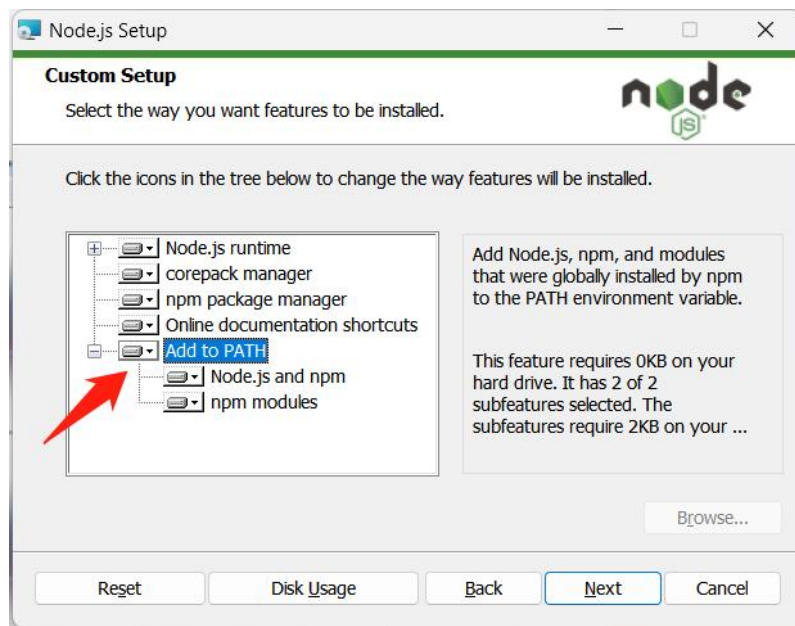
PS C:\Users\Lenovo> node -v
v18.20.8
PS C:\Users\Lenovo> |
```

2. Install node.js

(1) Install the corresponding .msi file according to the computer system version.

- Windows7: node-v12.22.12-x64.msi
- Windows10: node-v18.20.8-x64.msi

(2) Check **Add to PATH** (automatically add environment variables)



(3) After the installation is complete, run command prompt as administrator and enter **node -v** in the command line to check whether the installation is successful.

3. Run the project

- (1) Run the **sats.bat** file in the video-playback folder and wait for the CMD window to execute automatically
- (2) After the CMD window closes automatically, double-click to open **index1.html**

4. Playback video

- (1) Insert the HDD and click "Detecting hard drives"
- (2) Click on the video file list to play

