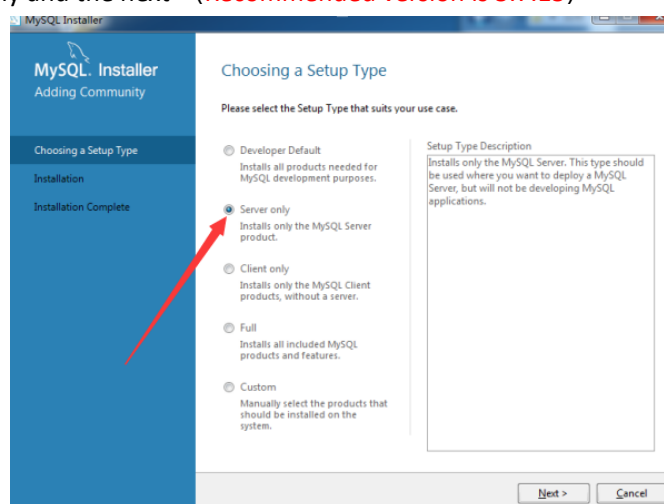


Install the T8 CMS local server

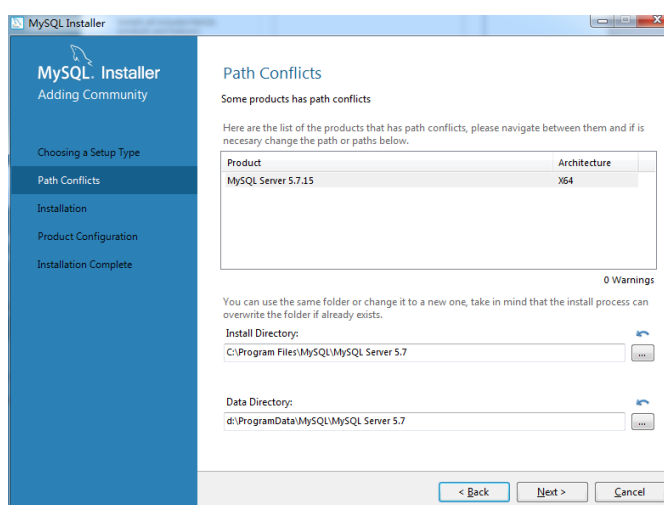
1. Install the MYSQL	1
2. Install the DVR server	6
3. Install T8 CMS	9
4. Setting DVR	12
to	
6. Port mapping	15

1.Install the MYSQL (Installation package of Mysql is significant, you can download it on the internet)

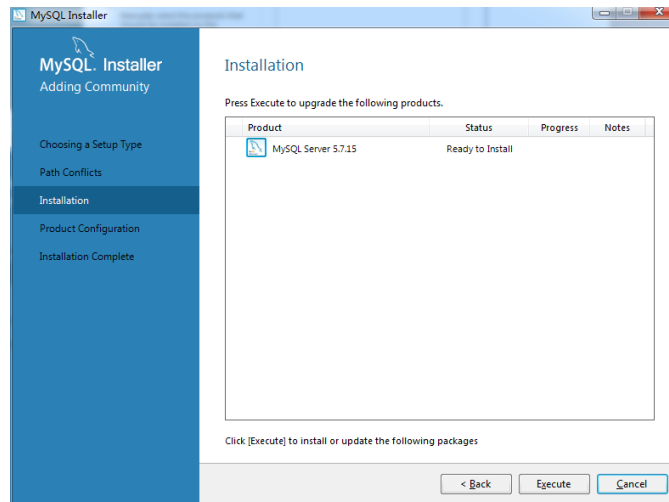
A. Select server only and the next (Recommended version is 5.7.15)



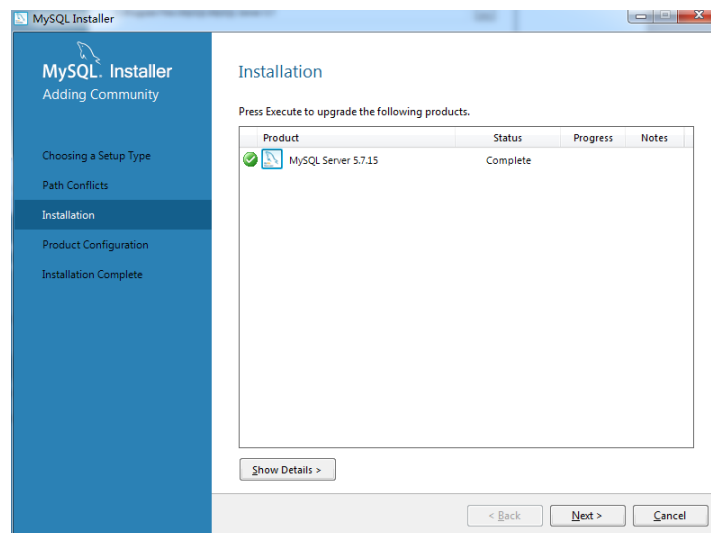
B.Select the next



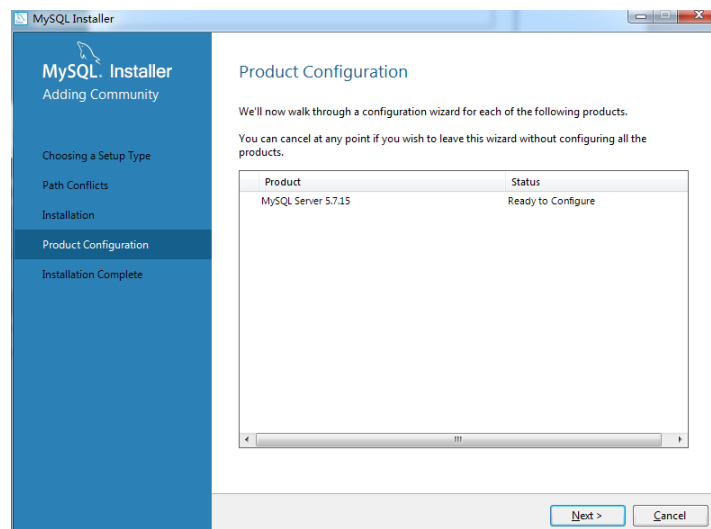
C.Select the next



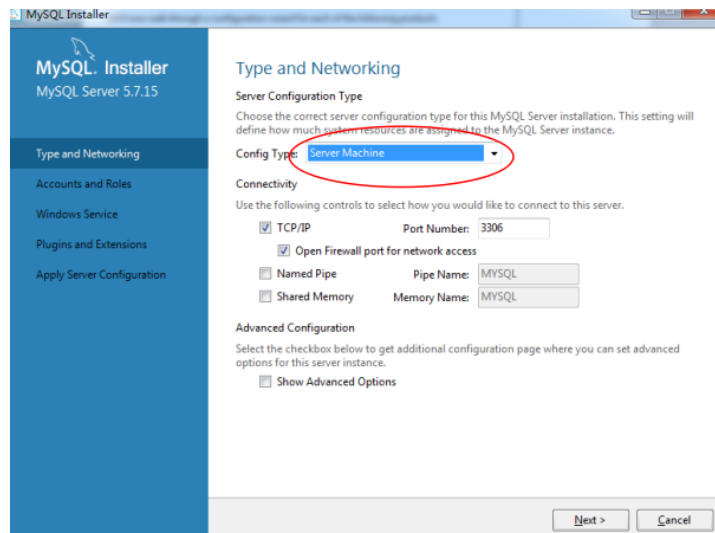
D.Select the next



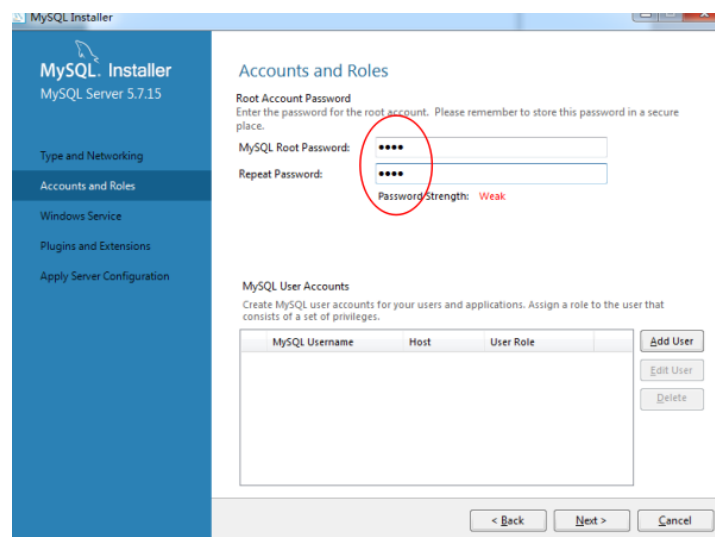
E.Select the next



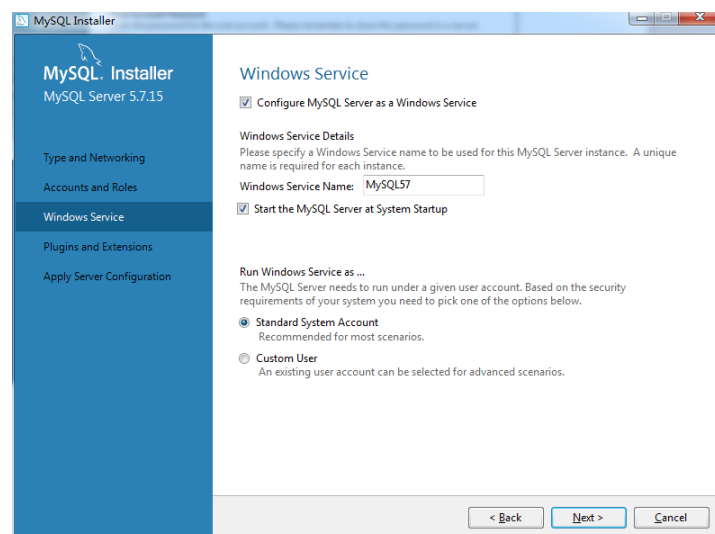
F.Select the server machine, and the next



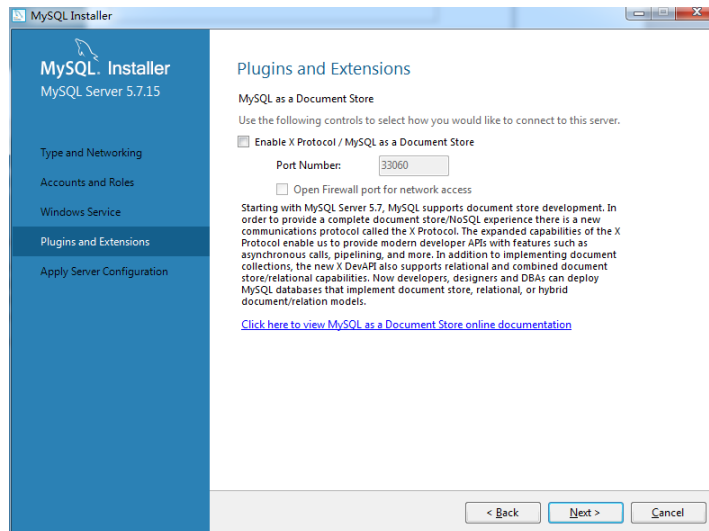
G.Remember the database password that you set.



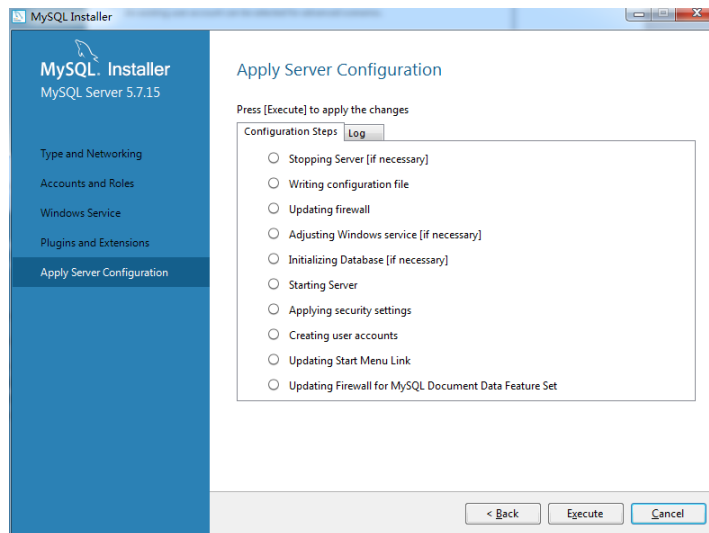
H.Select the next



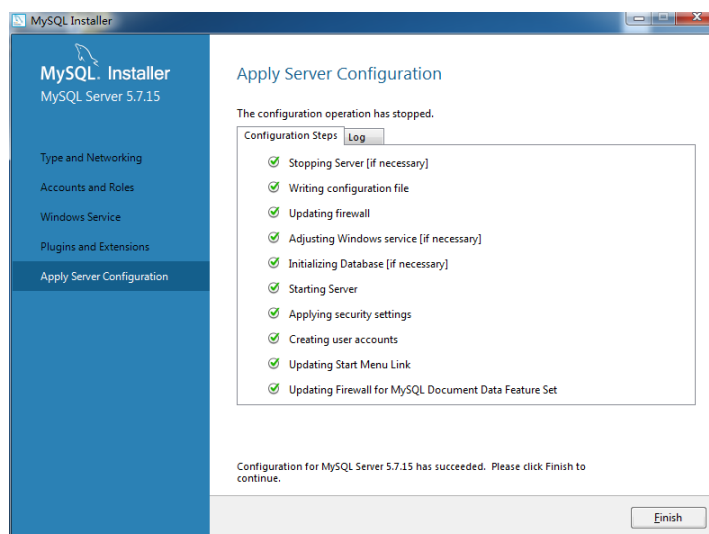
I.Select the next



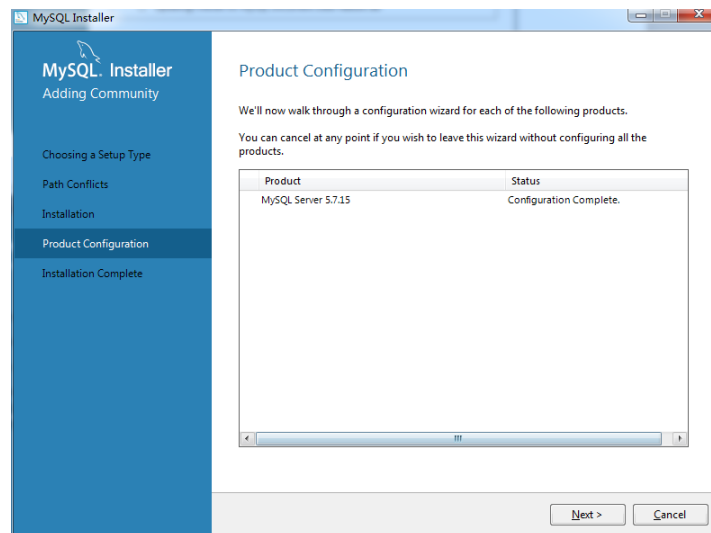
J.Select the execute



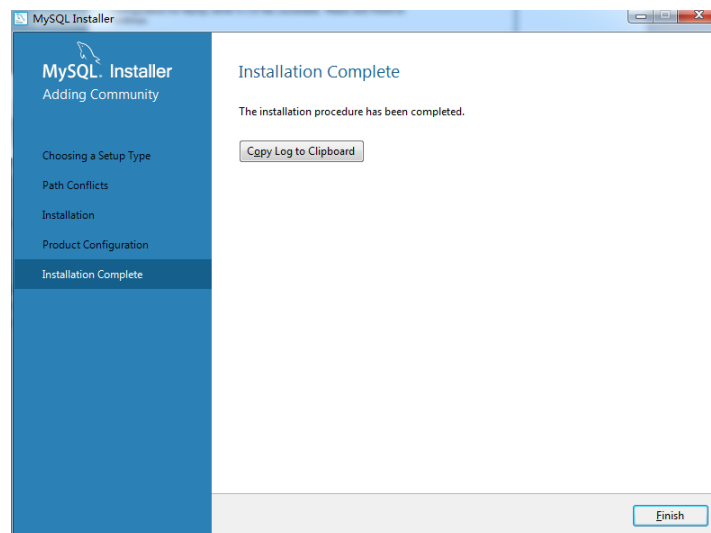
K.finish



L.Select the next



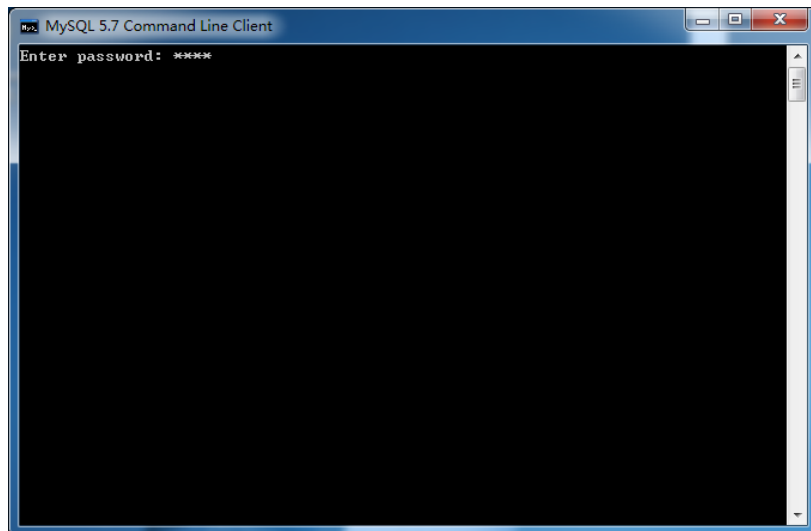
M.finish



N.Enter the command interface of MySQL

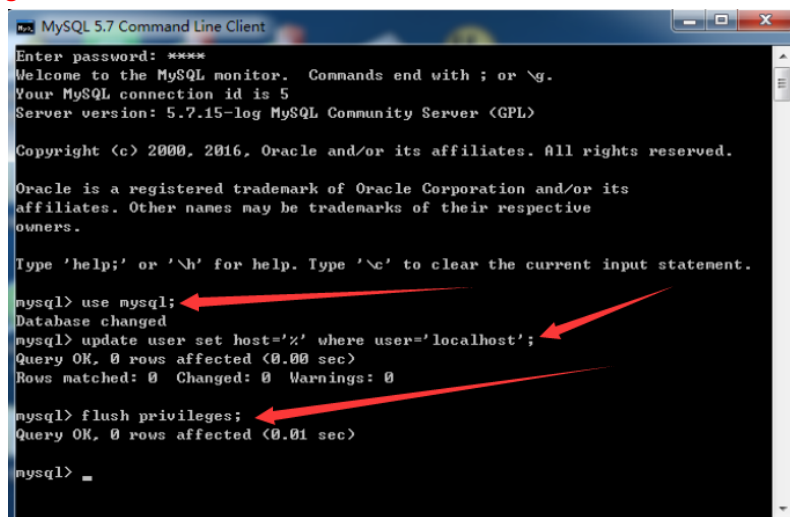


O.Enter the password that you set



P.Enter the command to invoke the database

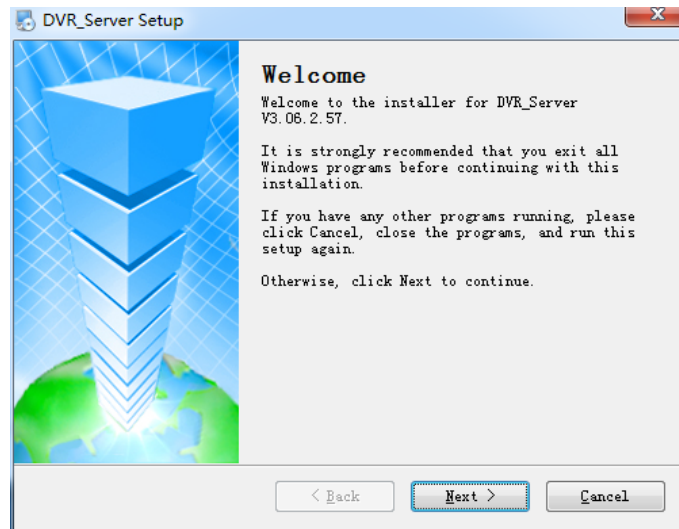
- 1.use MySQL;
- 2.update user set host='%' where user='localhost';
- 3.flush privileges;



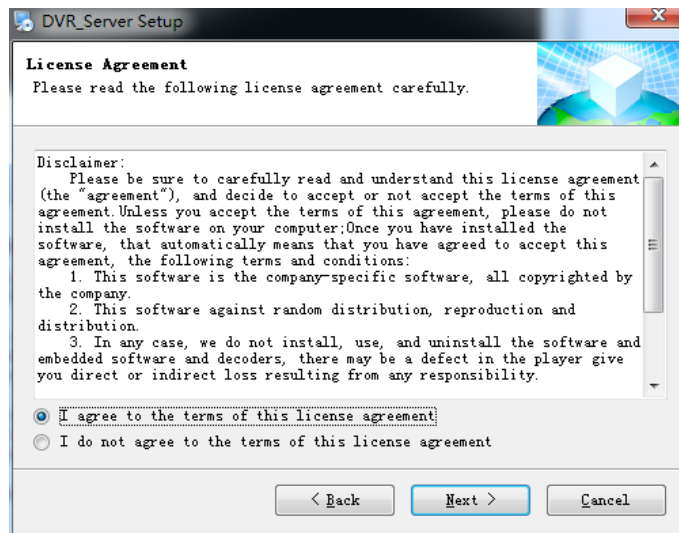
The installation of MySQL was finished.

2.Install the DVR server

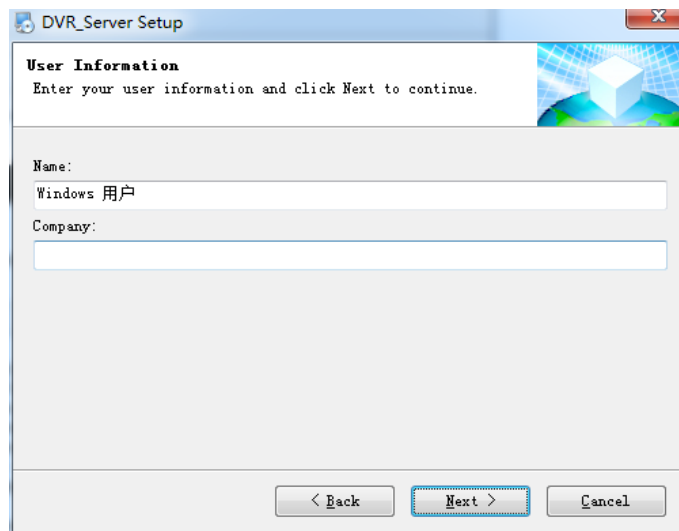
A.Select the next



B.Check the agreement and select the .next



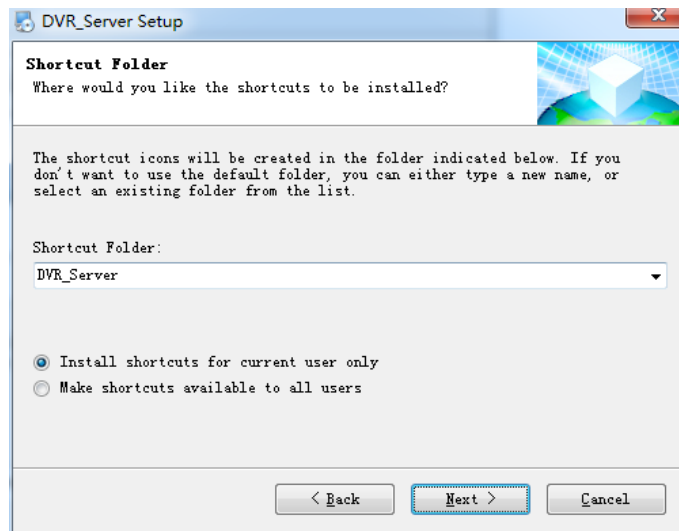
C.Select the next



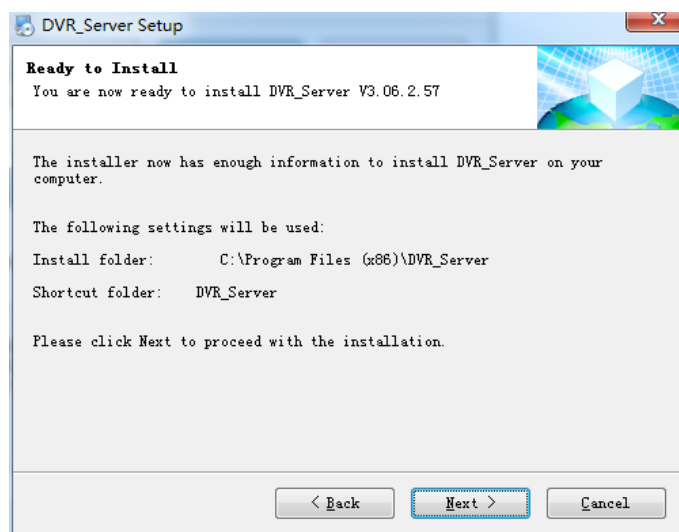
D.Select the next



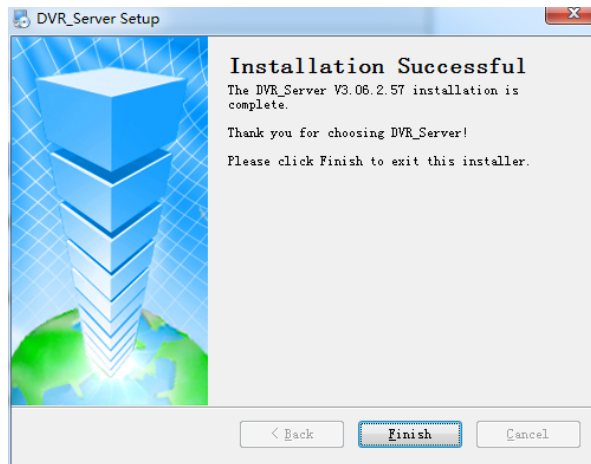
E.Select the next



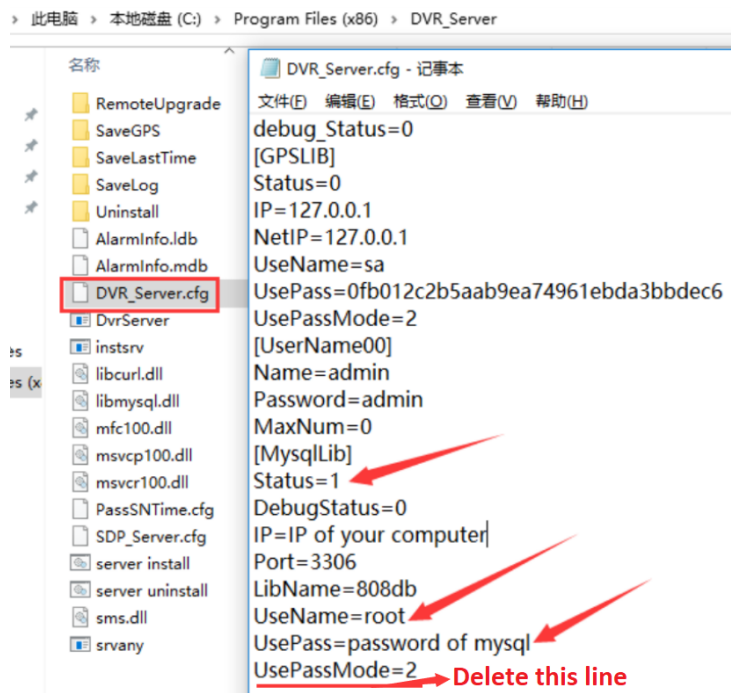
F.Select the next



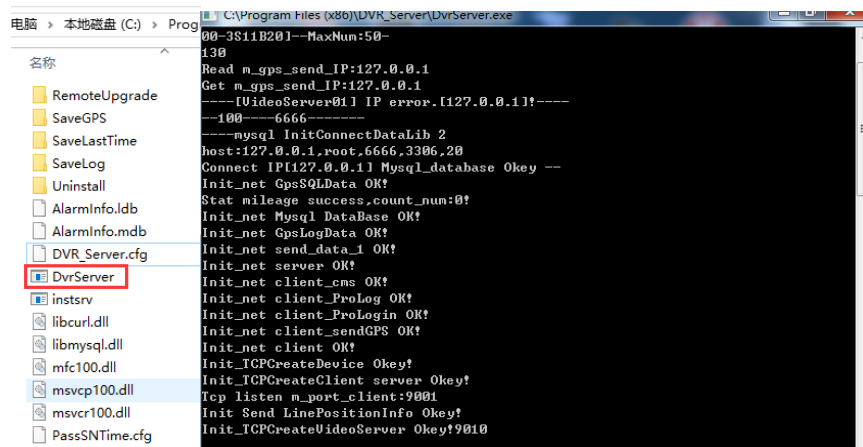
G.The installation of the DVR server is done.



H. Modify the configuration as below in the folder of the DVR server installation.

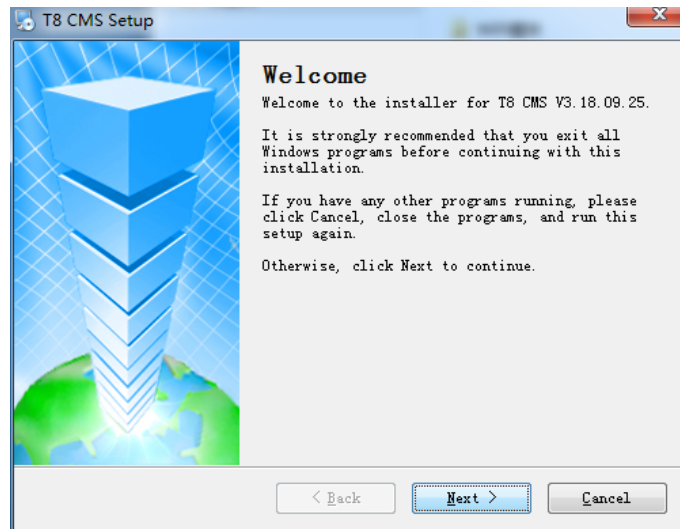


I. Then run the DVR server; you will see every line is ok.

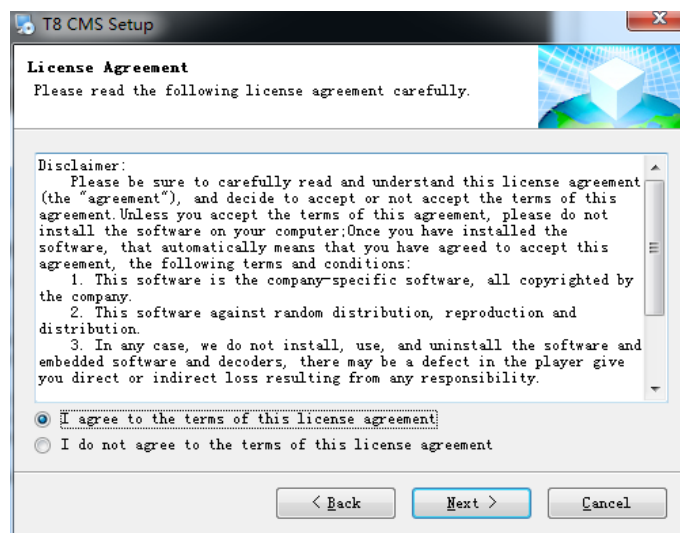


3. Install T8 CMS

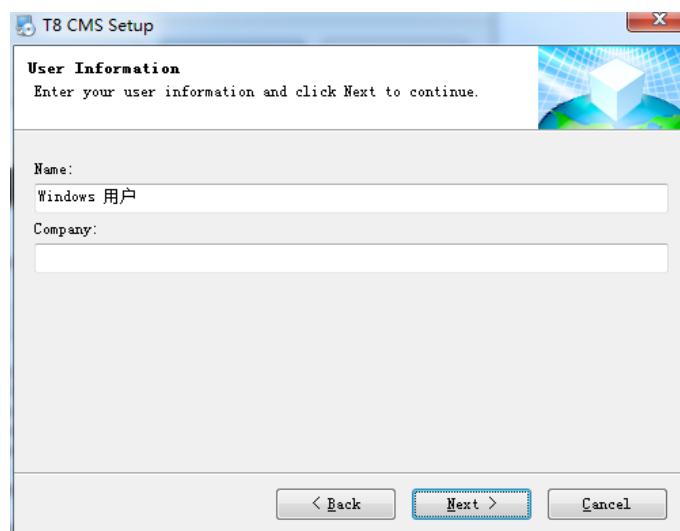
A. Select the next



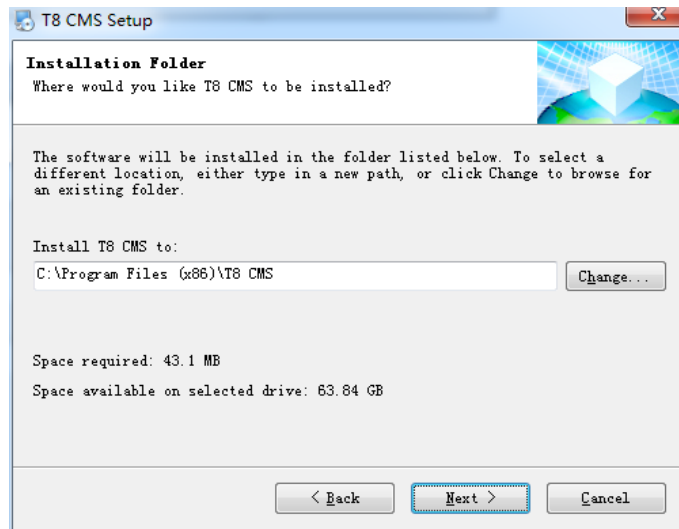
B.Select the next



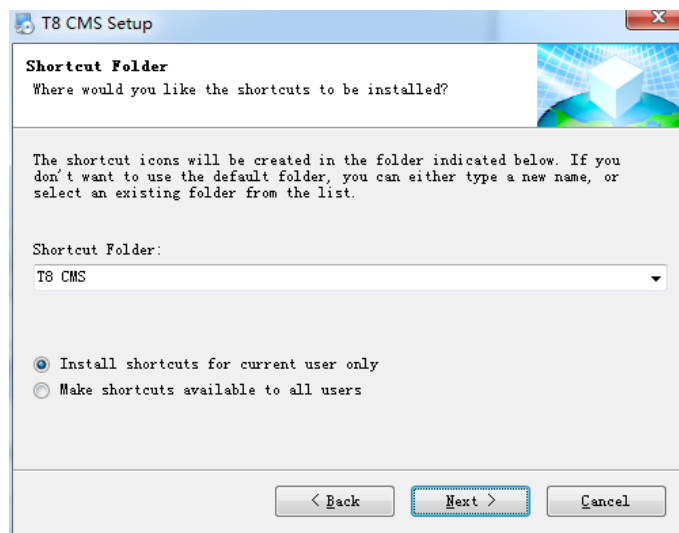
C.Select the next



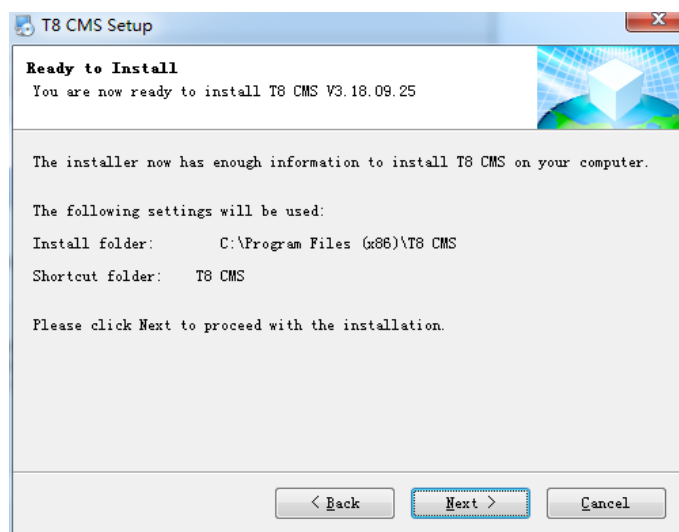
D.Select the next



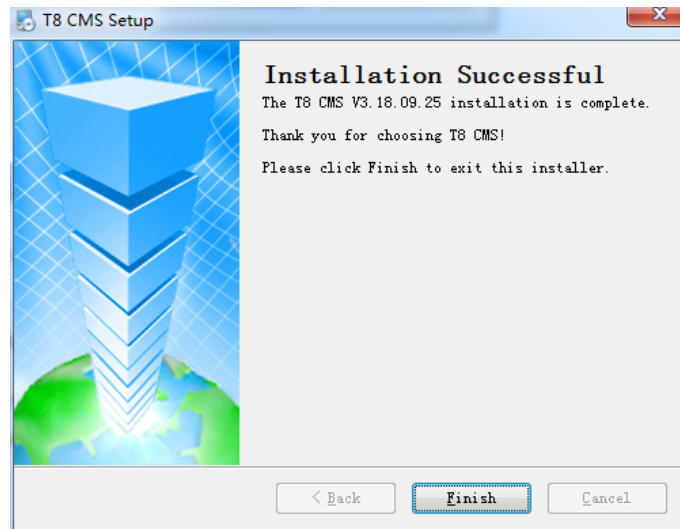
E.Select the next



F.Select the next

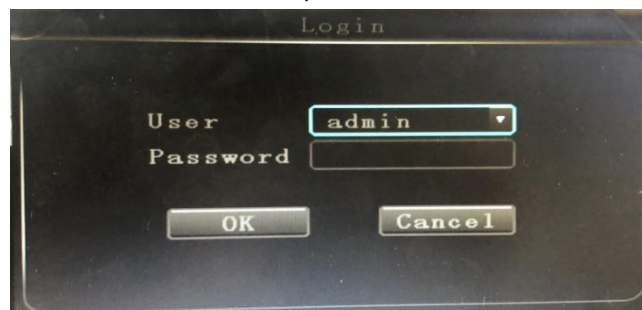


G.Click the finish, and the T8 cms are finished.



4.Setting DVR

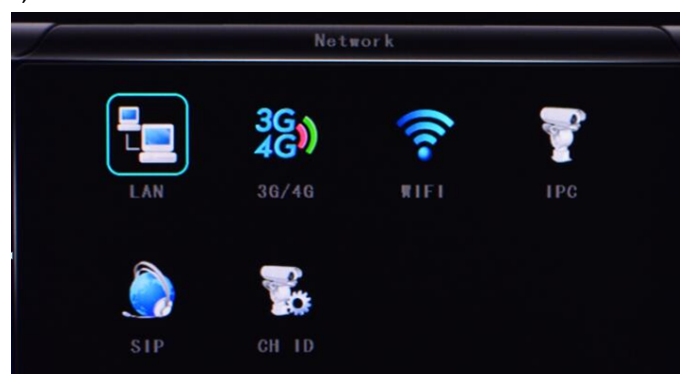
A.Turn on the MDVR and enter the menu; the password is 6666.



B.Below is the main menu.



C.Click the Network; it will show as below:



D.LAN mode

Click LAN, input the IP address according to your network, and input the server IP and port.

LAN

Net type	LAN	DHCP	OFF
Static IP	192.168.002.246	Net mask	255.255.255.000
Gateway	192.168.002.100	DNS	202.096.134.033
Sever IP	cvideoview.com	Sever port	8101

OK Cancel

E.3g/4g mode

Input the ANP setting according to your 4G carrier.

3G/4G

APN	3gnet
Dialup Num	*99#
User name	3gnet
Password	3gnet

OK Cancel

Choose the net type to 3g/4g, DHCP to ON, and input the server IP and port.

LAN

Net type	3G/4G-WIFI	DHCP	ON
Static IP	192.168.002.246	Net mask	255.255.255.000
Gateway	192.168.002.100	DNS	202.096.134.033
Sever IP	cvideoview.com	Sever port	8101

OK Cancel

F.WIFI mode

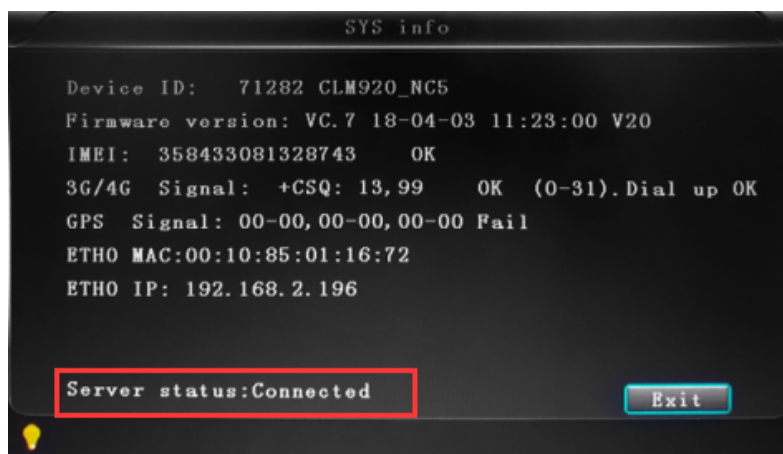
Input the WiFi setting according to the wireless network.



Choose the net type to WiFi, DHCP to ON, and input the server IP and port.

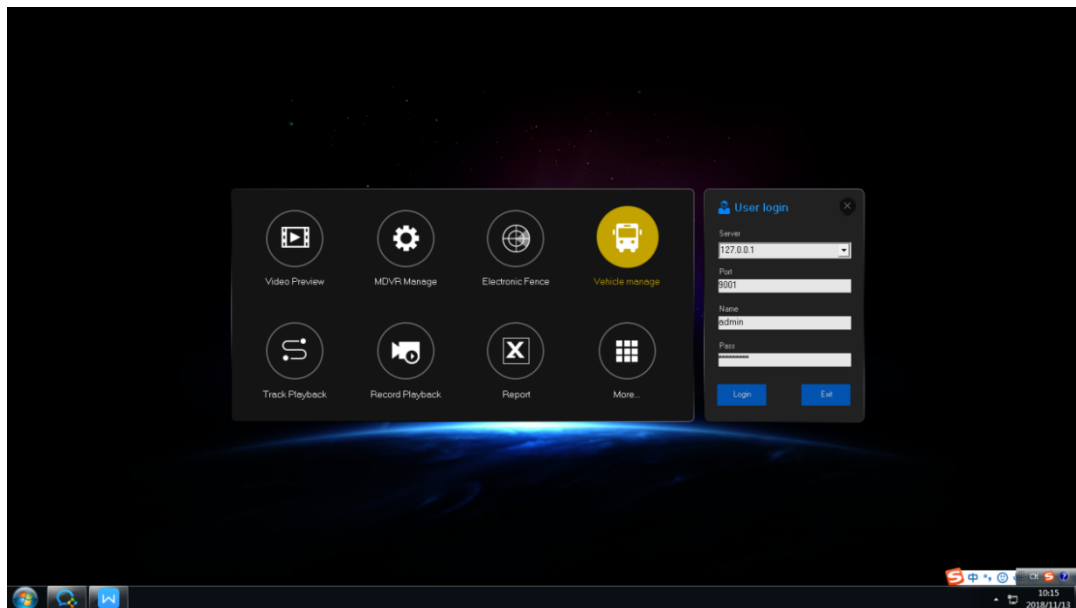


After inputting the new setting, please restart the MDVR to check the server connection status.



5. Log in to the server by T8 CMS.

Run the T8 cms and input the server IP, port, user name, and password.
(127.0.0.1/9001/adminname/adminpass)



6.Port mapping

A.mapping the port

We suggest port mapping for 8101-8105, 9001-9010; then, the external network can log in to CMS. For example, if your server is in the office and you did not do port mapping, you can't log in to CMS when you work at home.

Different routers and setting methods other rent; please refer to the following Settings:

a) Name: fill in a name for the MDVR port.

b) Ports to Open: 8101-8105, 9001-9010

c) IP Address: Server IP address

d) Inbound Filter: TCP、UDP、Allow AL; please select "Allow All."

e) Schedule: select "Always."

B.Domain binding setting

If you don't have a static public IP address, you need to do domain bindi; please ask your network administrator for help.

D-Link					
DIR-835 //	SETUP	ADVANCED	TOOLS	STATUS	SUPPORT
ADMIN	DYNAMIC DNS <p>The DDNS feature allows you to host a server (Web, FTP, Game Server, etc...) using a domain name that you have purchased (www.whateveryournameis.com) with your dynamically assigned IP address. Most broadband Internet Service Providers assign dynamic (changing) IP addresses. Using a DDNS service provider, your friends can enter your host name to connect to your game server no matter what your IP address is.</p> <p>Sign up for D-Link's Free DDNS service at www.DLinkDDNS.com.</p> <p> <input type="button" value="Save Settings"/> <input type="button" value="Don't Save Settings"/> <input type="button" value="Reboot Now"/> </p>				Helpful Hints... <p>To use this feature, you must first have a Dynamic DNS account from one of the providers in the drop down menu.</p> <p>More...</p>
TIME					
SYSLOG					
EMAIL SETTINGS					
SYSTEM					
FIRMWARE					
DYNAMIC DNS					
SYSTEM CHECK					
SCHEDULES					
	DYNAMIC DNS SETTINGS <p>Enable Dynamic DNS : <input type="checkbox"/></p> <p>Server Address : <input type="text"/> <input type="button" value="Select Dynamic DNS Server"/></p> <p>Host Name : <input type="text"/></p> <p>Username or Key : <input type="text"/></p> <p>Password or Key : <input type="password"/></p> <p>Verify Password or Key : <input type="password"/></p> <p>Timeout : <input type="text" value="576"/> (hours)</p> <p>Status : Disconnected</p>				

AMERICAN BUS VIDEO INC.

Toll-Free 866.468.8042

Fax: 770.887.5944

AmericanBusVideo.com

VehicleVideoCameras.com

SchoolBusCamera.com

35+ Years of Mobile Digital Sales & Service Experience