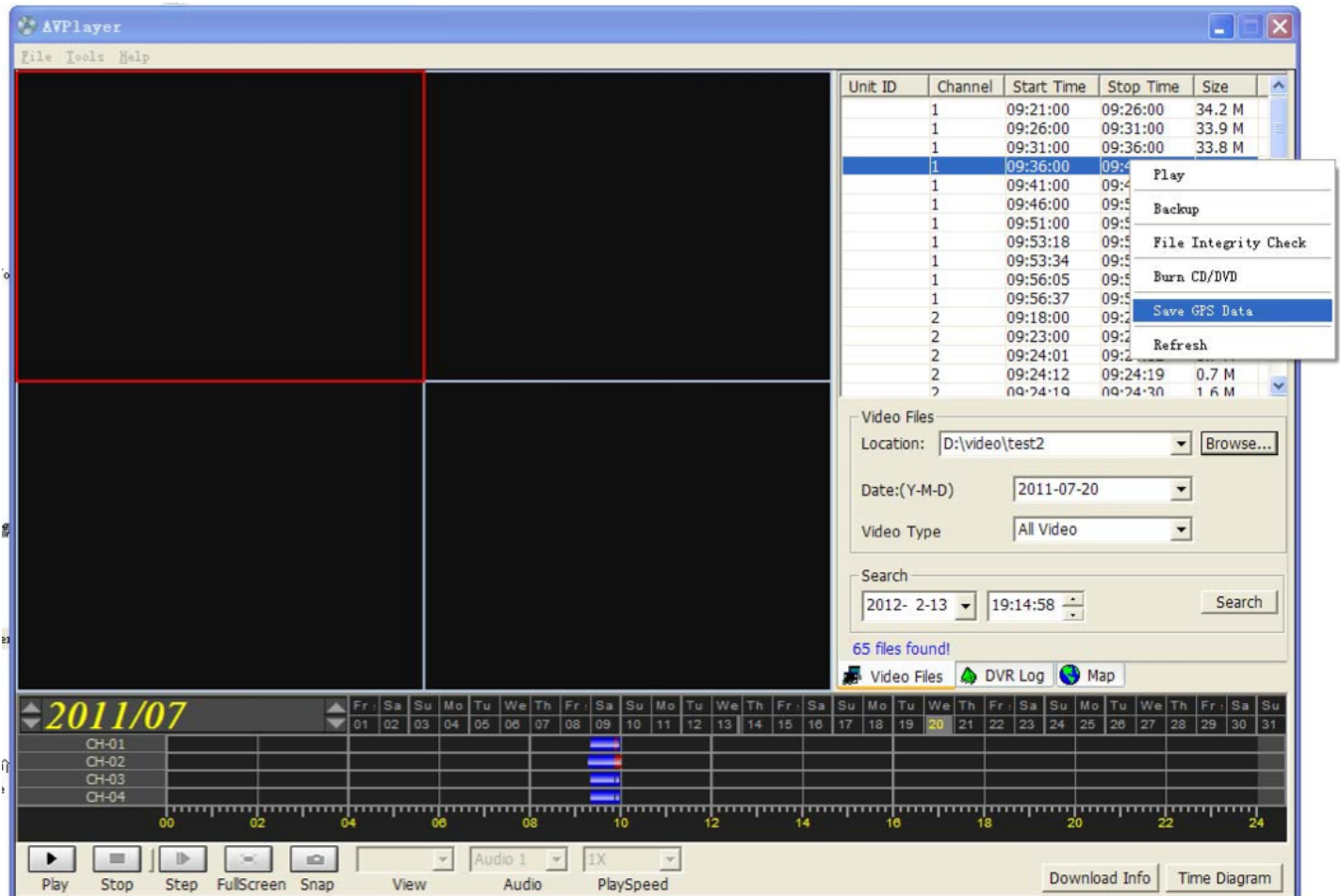


# How to extract GPS data from SD4mX record file

The AVPlayer software can extract the GPS data from the record file and save it into a KML format file. Please note, only the version later than 1.23 support this feature.

To extract GPS data from record file, open the AVPlayer.

Then in the file list, right click the file you want to extract GPS data from, then select “Save GPS Data”.



The GPS data extraction is now functional and it can extract the data into a “KML” file type that could be used by a mapping program to plot route location information on their maps. What would be required is to find a mapping program that can import the “KML” data into their map to create a route of that vehicle for that day.

## What is KML?

KML is a file format used to display geographic data in an Earth browser, such as Google Earth, Google Maps, and Google Maps for mobile. You can create KML files to pinpoint locations, add image overlays, and expose rich data in new ways. KML is an international standard maintained by the [Open Geospatial Consortium, Inc. \(OGC\)](http://www.opengeospatial.org/).

**American Bus Video Inc (770) 263-8118**

[DriverSafetyCameras.com](http://DriverSafetyCameras.com)

[FleetDriverRiskManagement.com](http://FleetDriverRiskManagement.com)

25 Years of Fleet Driver Safety System Sales & Service Experience

All Rights Reserved. © American Bus Video Inc. 2013