

Format SD Card FAT32

7/12/2016
L. Kusch - OST

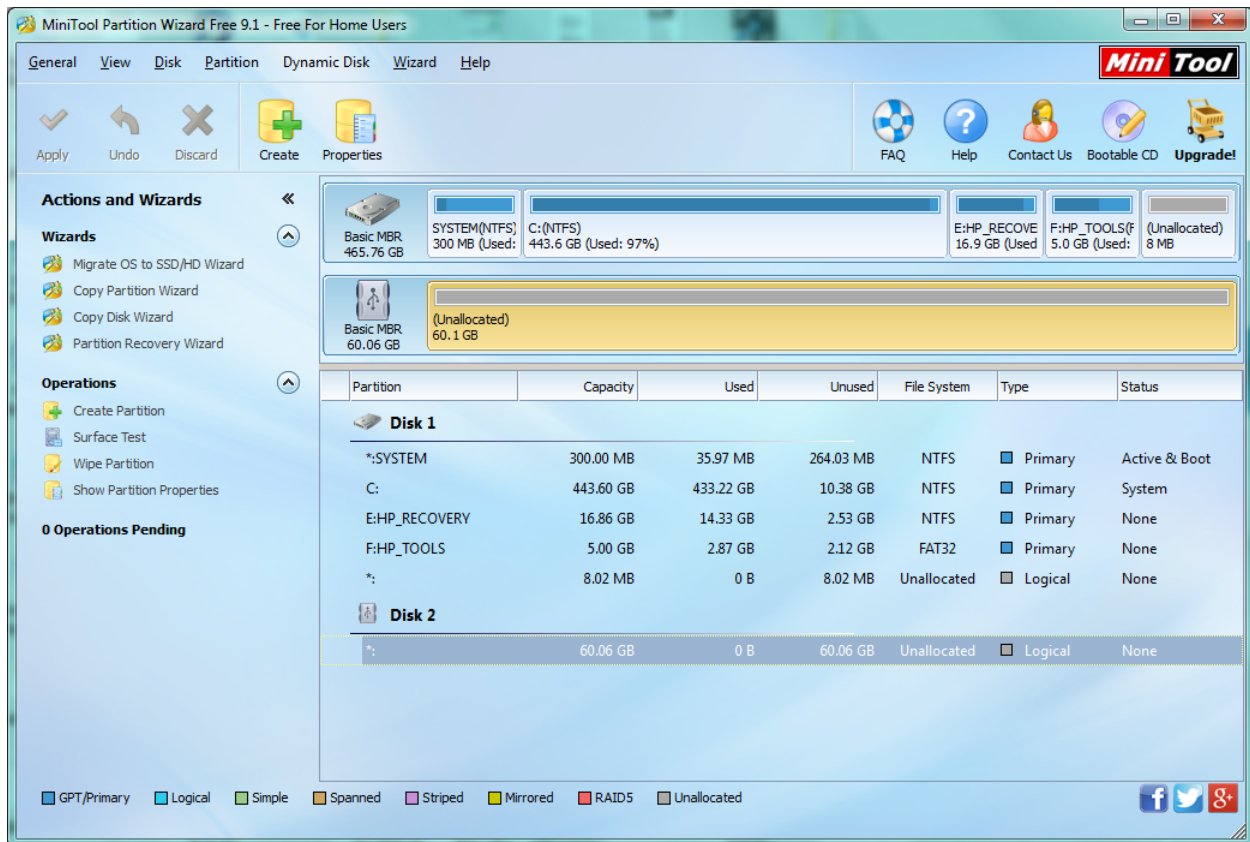
To format a SD Cards larger than 32GB on a Windows computer

Download the Mini Aide Formatter from the link <http://www.fat-32-formatter.com/miniade-fat32-formatter-home.html>.

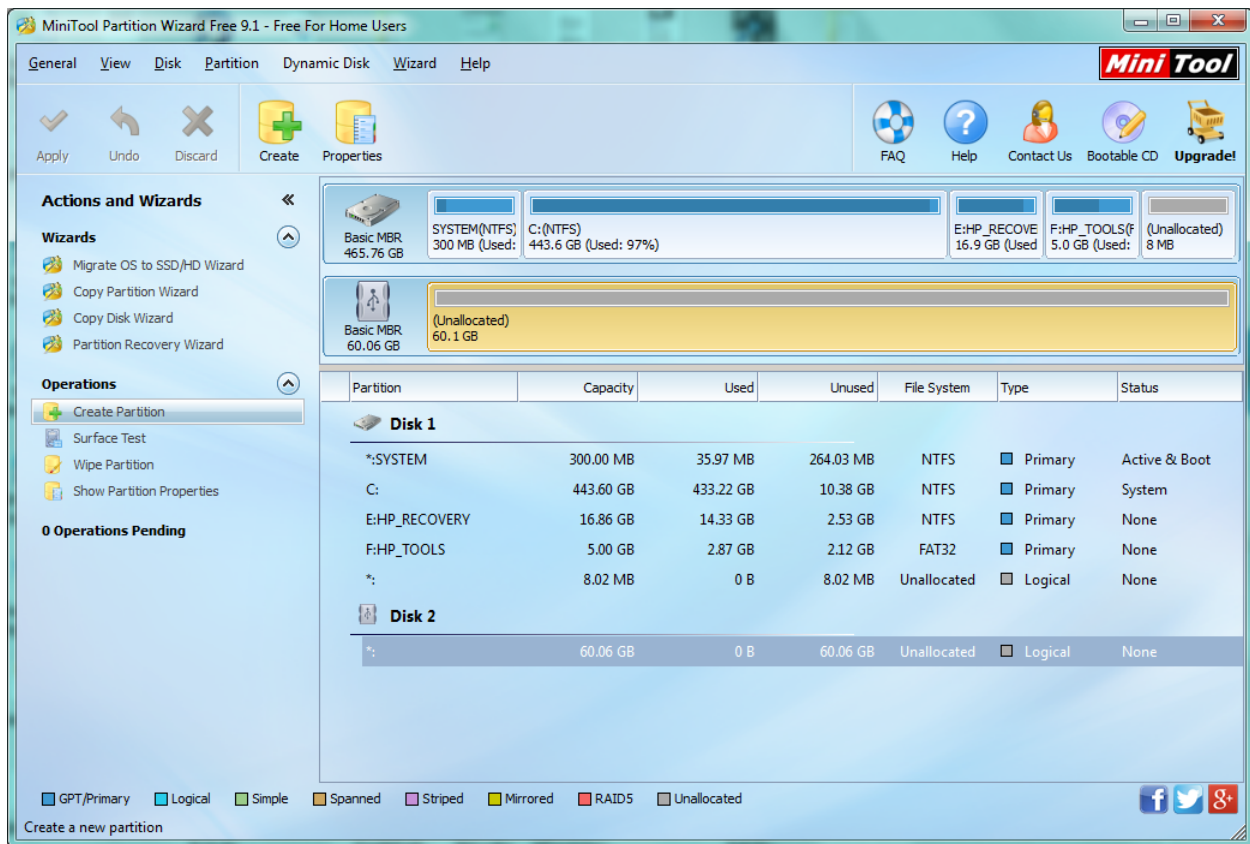
Install the MiniAide FAT32 Formatter.

Place the SD Card in your Card Reader on your computer.

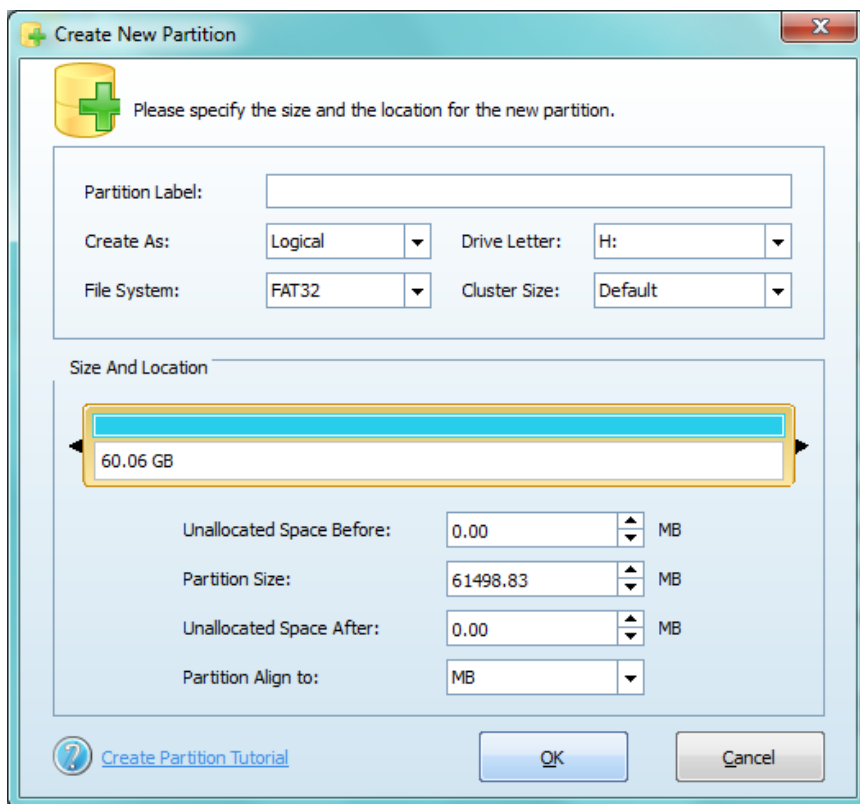
Run the MiniAide FAT32 Formatter.



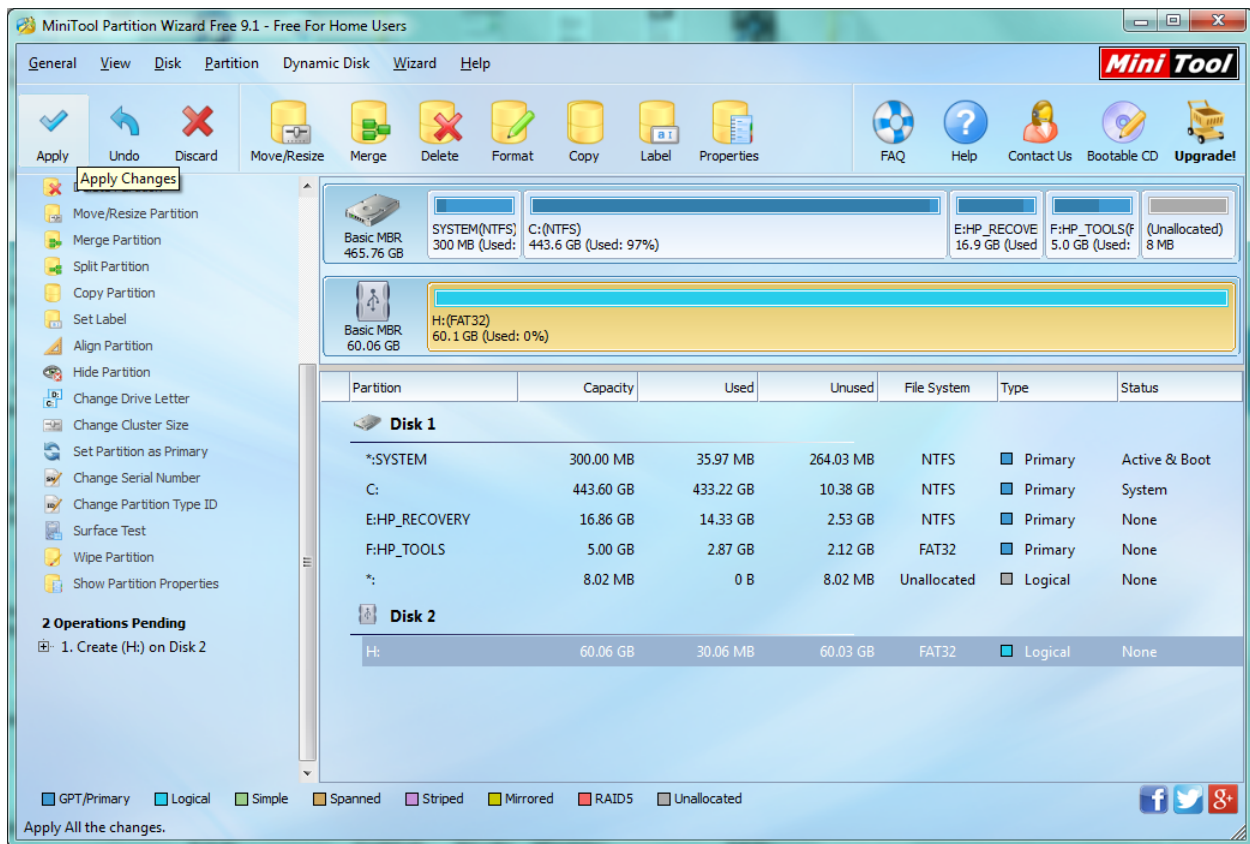
Select the SD Card. Most of the time the SD Card will be Disk 2.



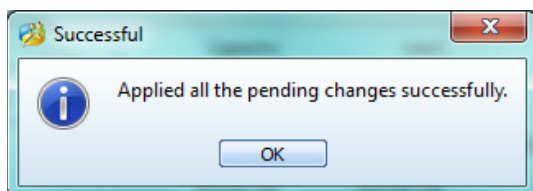
Click on Create Partition.



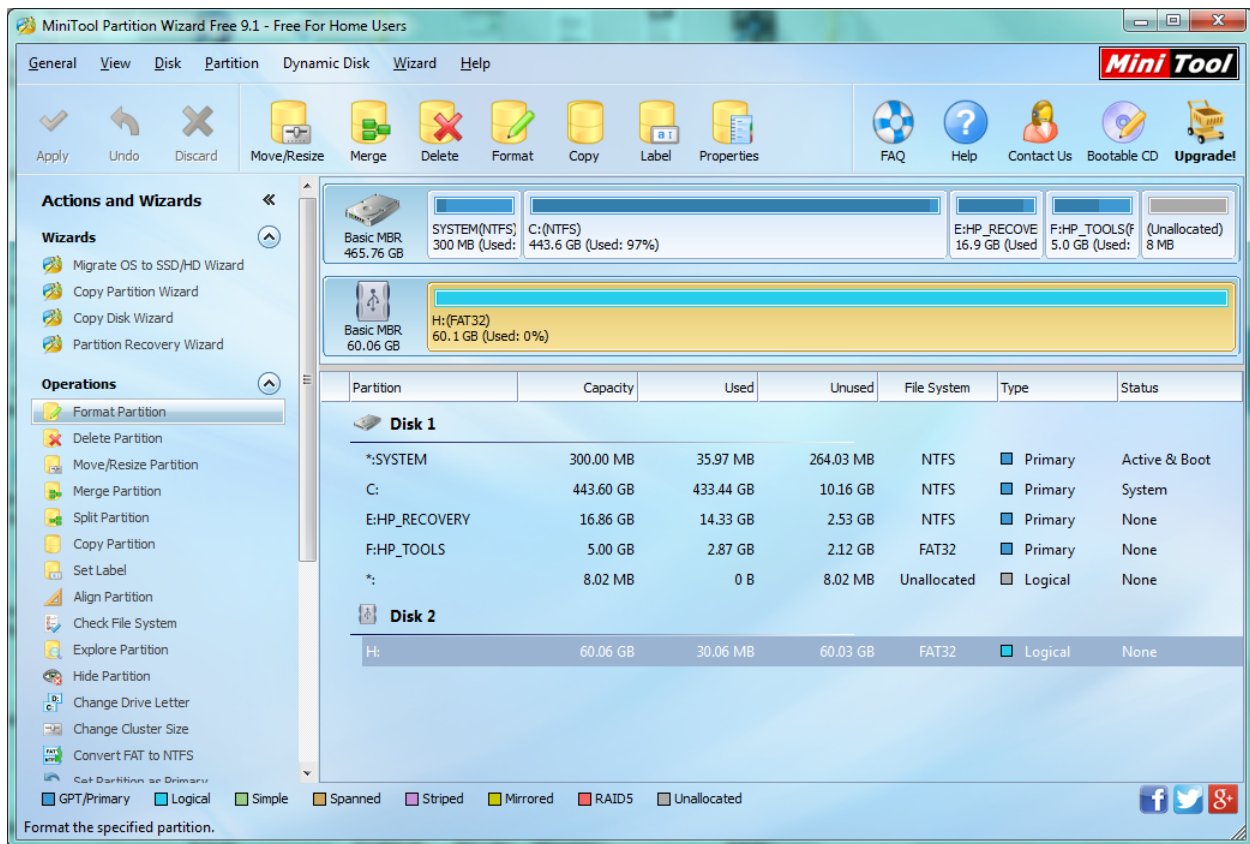
Select the File System to Fat32 and Click OK



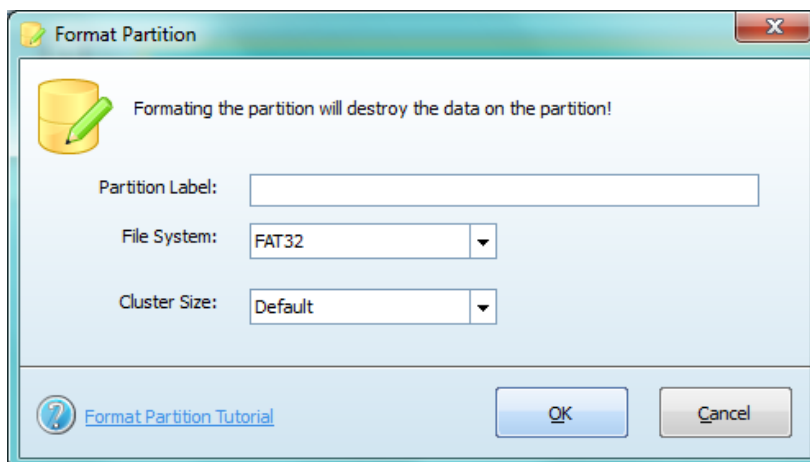
Click "Apply" to apply the Pending Operations creating the Partition.



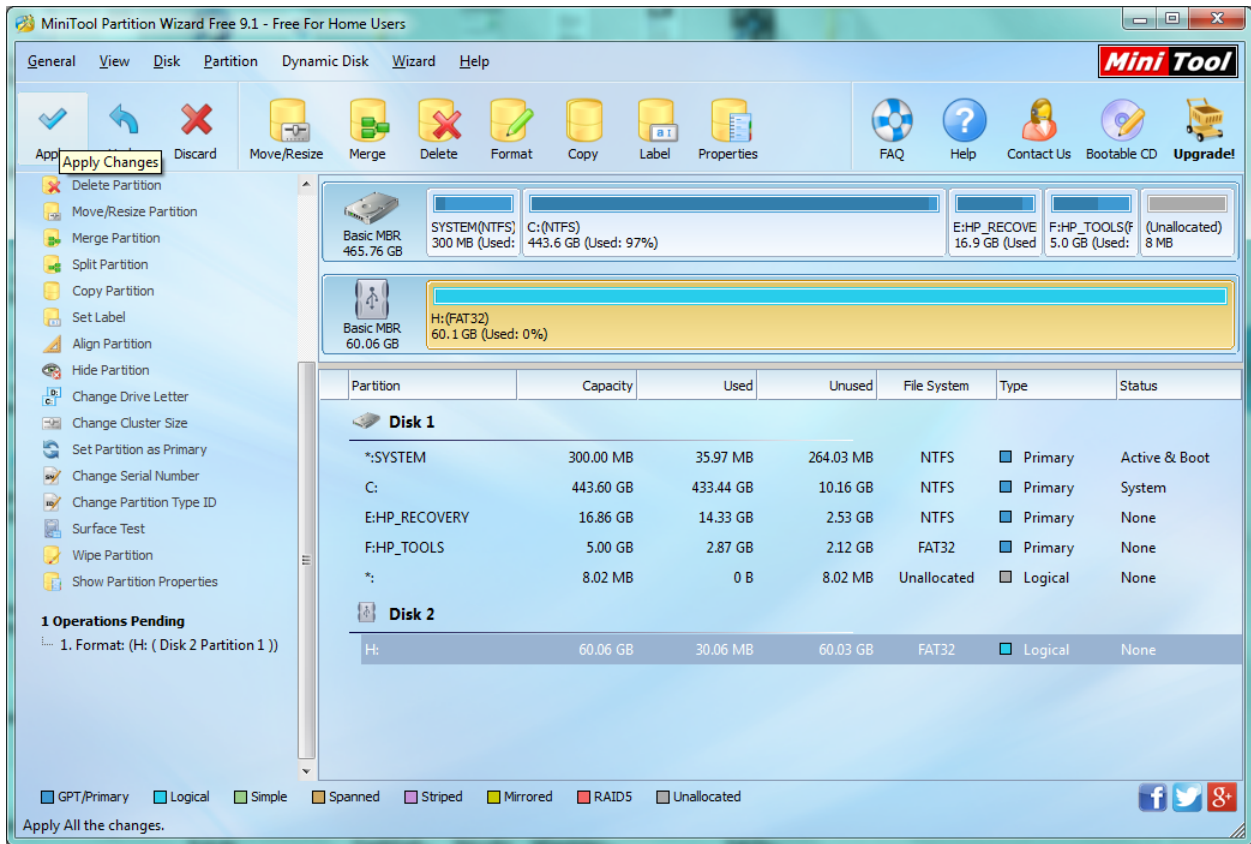
Click OK



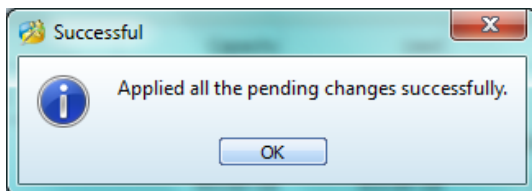
Click "Format Partition"



Make sure the File System is FAT32 and Click OK.



Click "Apply" to apply the Pending Operations formatting the Partition.



The SD Card is now formatted FAT32.

American Bus Video Inc.

sales@AmericanBusVideo.com
AmericanBusVideo.com
DriverSafetyCameras.com
FleetDriverRiskManagement.com

770-263-8118

All Rights Reserved © American Bus Video Inc. 2016