

# CMS

## Remote Monitoring Software

# User Manual

January 1, 2015 Version 1.1

### **Minimum Requirements for CMS Server:**

Dell T320 server or better

SQL Server 2003, SQL\_server 2005 or newer

Wan IP (Fixed IP): The IP address is never changed.

Small Fleets: Windows 7, Windows 8

Large Fleets will require: Window Server 2012 or newer

### **Minimum System Requirements for: DVR\_Player**

CPU: Intel Core i5 3.4 GHz

RAM: 6GB (4GB, 8GB would be better)

Video standard: Intel(R) HD Graphics

**American Bus Video Inc.**

[sales@AmericanBusVideo.com](mailto:sales@AmericanBusVideo.com)

[AmericanBusVideo.com](http://AmericanBusVideo.com)

[DriverSafetyCameras.com](http://DriverSafetyCameras.com)

[FleetDriverRiskManagement.com](http://FleetDriverRiskManagement.com)

770.263.8118

25 Years of Fleet Driver Safety System Sales & Service Experience

All Rights Reserved. © American Bus Video Inc. 2015

## **Basic PC Skills Required For GUI Playback**

The Mobile Digital Video Recorders (MDVR) we provide operate on a PC program viewer program called a Graphical User Interface or GUI. These programs have been designed to be intuitive and require no formal training to operate the program, as long as the user possesses basic PC skills. Use of these GUI aka Video Player programs are predicated on the assumption/requirement that the customer of this high tech video file management tool has authorized personnel who will be operating this program who are competent with the basic operation of their own company PCs. The manufacturer and their representatives are not responsible, licensed or certified to train users of this program on the basic functions of a customer or company's own company PCs.

ABV does not have the resources required to teach customers how to operate their PCs to a degree that they may then operate programs running on them. It is the customer's responsibility to learn how to operate their own PC before implementing a product that requires operation on their PC.

Simply stated; if the intended customer system operator is incapable of downloading files from the internet, opening programs, temporarily disabling PC OS or third party software that might interfere with the installation or downloading of the application program, running or executing application files, cannot download Media Player Program codec plug-ins, cannot save a file, cannot transfer a file or browse for a file, nor make a screen capture of the program viewer GUI, cannot send a saved file by e-mail, cannot save a file to a portable digital storage device, then you are not ready for a digital vehicle surveillance system.

Basic PC skills are a requirement of all who intend to operate these products. Those who ignore the above may find it difficult if not impossible to operate the system and make effective use of the video evidence, resulting in a loss of value and a waste of funds.

## **Network System Administrator Required for CMS**

Those customers incorporating the Central Management Software (CMS) DVR Server or Client Software in order to enable the Wi-Fi or Cellular functionality in their mobile video application must have in-house a Network Administrator with at least the training and certification of Microsoft Certified Systems Administrator (MCSA) to install, configure, operate, maintain and troubleshoot the DVR Server & CMS software, and or operate the higher functions of the program capabilities as they require access to your Wi-Fi or Cellular network, your mail server, creating SQL databases and many other network administrator functions.

It is solely the responsibility of the purchaser to provide competent certified Network Administrator with at least the training and certification of Microsoft Certified Systems Administrator (MCSA) to install, configure, operate, maintain and troubleshoot the DVR Server & CMS software, and or operate the higher functions of the program capabilities as they require access to your Wi-Fi or Cellular network, your mail server, creating SQL databases and many other network administrator functions.

This is a Customer CMS Server Hosted solution for those who wish to maintain all data in-house, with free

software intended for those who know what they are doing only. Cellular CMS Server Network driven solution is not for those who know a little about networks and feel lucky.

American Bus Video Inc (ABV) provides no support, training, technical service, phone support for CMS Server/DVR Server or Client Server software for Wi-Fi/3G/4G /4G LTE systems that we offer.

In simple terms, if you do not have a competent in house certified Network Administrator with at least the training and certification of Microsoft Certified Systems Administrator (MCSA) to install, configure, operate, maintain and troubleshoot the DVR Server & CMS software, and or operate the higher functions of the program capabilities as they require access to your Wi-Fi or Cellular network, your mail server, creating SQL databases and many other network administrator functions, then you should not be purchasing a Wi-Fi or Cellular Network driven system that requires a CMS Server, DVR Server or Client Server.

### **Operational Verification**

It is solely the responsibility of the user of the product to provide verification of product functionality when installed and each time it is operated, to prevent missing the documentation of important events due to operational problems, that could have been detected before they prevented important video evidence from being documented.

Operational verification be a simple daily visual verification of the DVR LED Status LEDs displaying on the unit faceplate to verify the unit is powered up and recording, or by use of the Remote DVR Status module (option).

ABV Recommends weekly verification via memory playback test that the cameras are all properly aimed, that the camera lenses are clean, that the audio is functional for each camera, and that the DVR is recording when the ignition is on.





"Agency implies Stewardship", meaning if you own a product, it is your responsibility to maintain the product to insure you are able to obtain value from the use or operation of that product.

ABV recommends daily LED DVR status and weekly video recording system check, to insure all systems are recording properly so when you need them most in an incident you do not learn they blew a 10 cent fuse 7 years ago (actual case).

## I . Brief Introduction

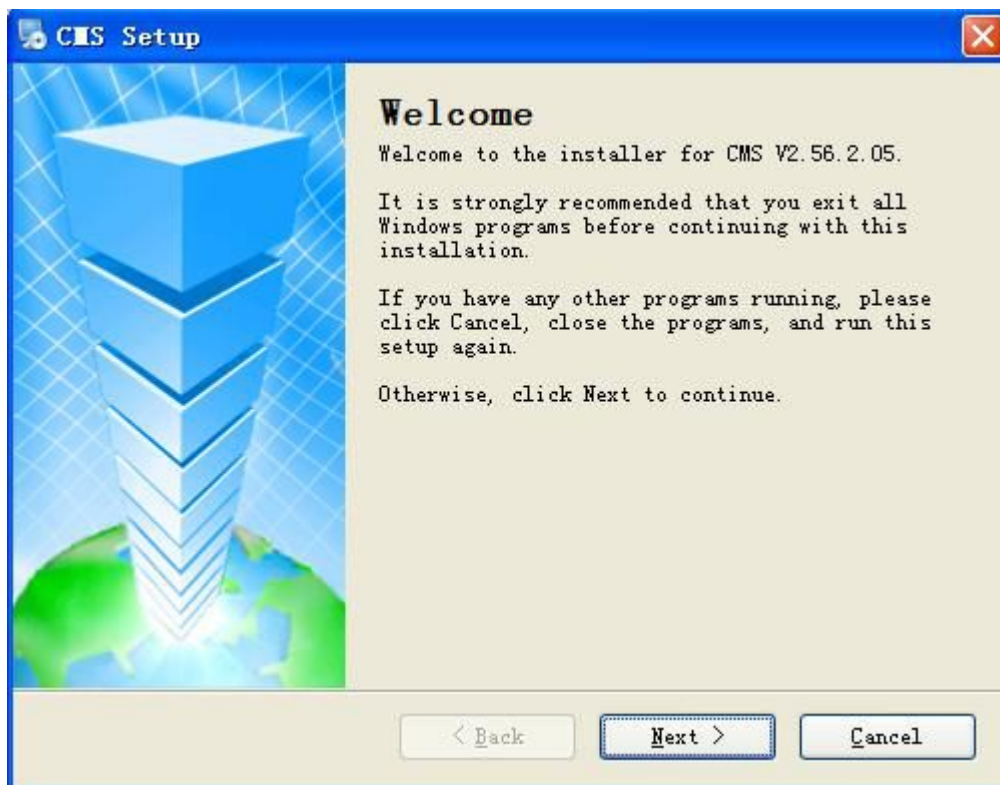
This software used for our 3G Mobile DVR only, not applicable for other company's Mobile DVR.

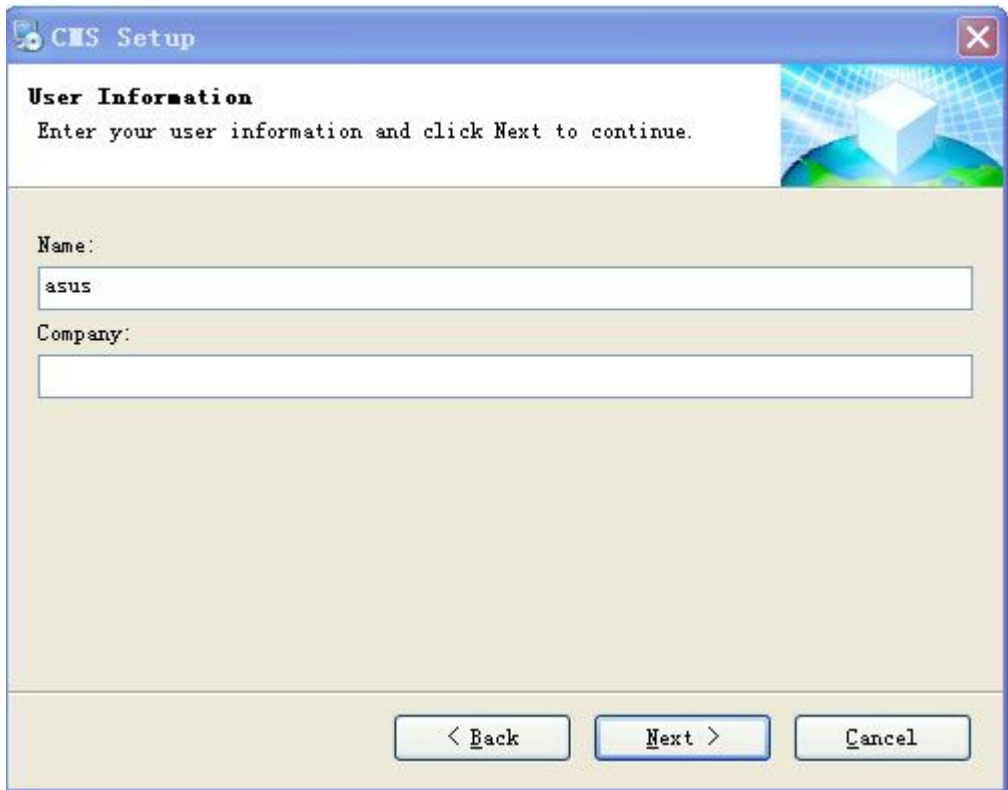
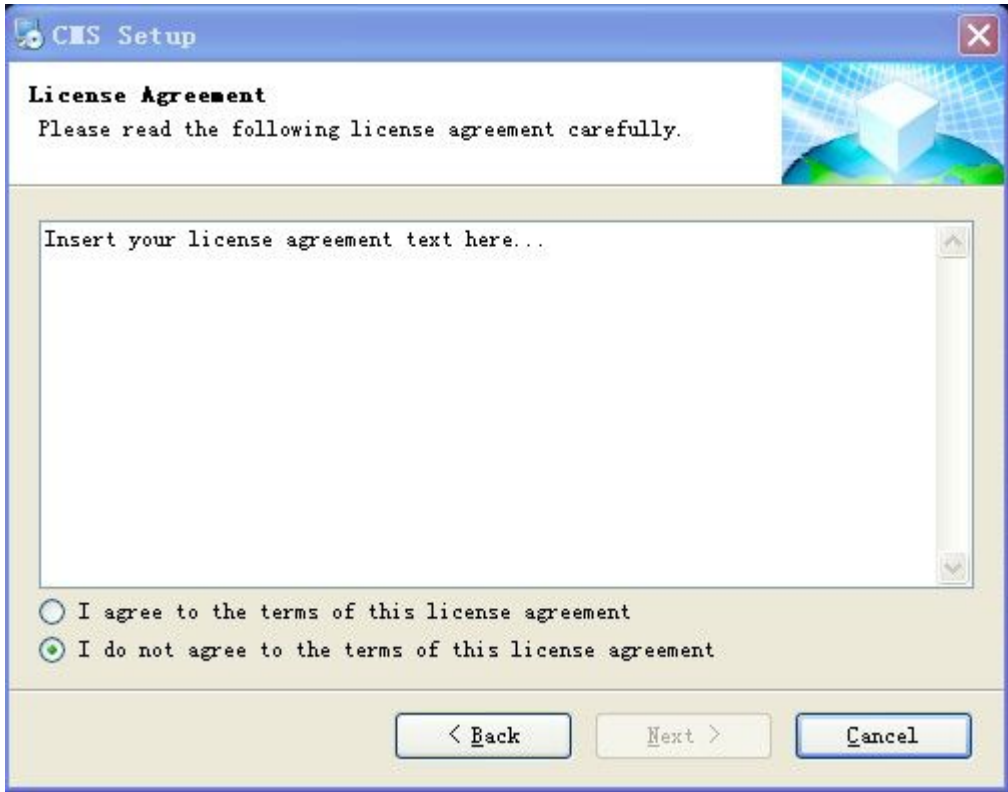
Computer specification requirements for software installation:

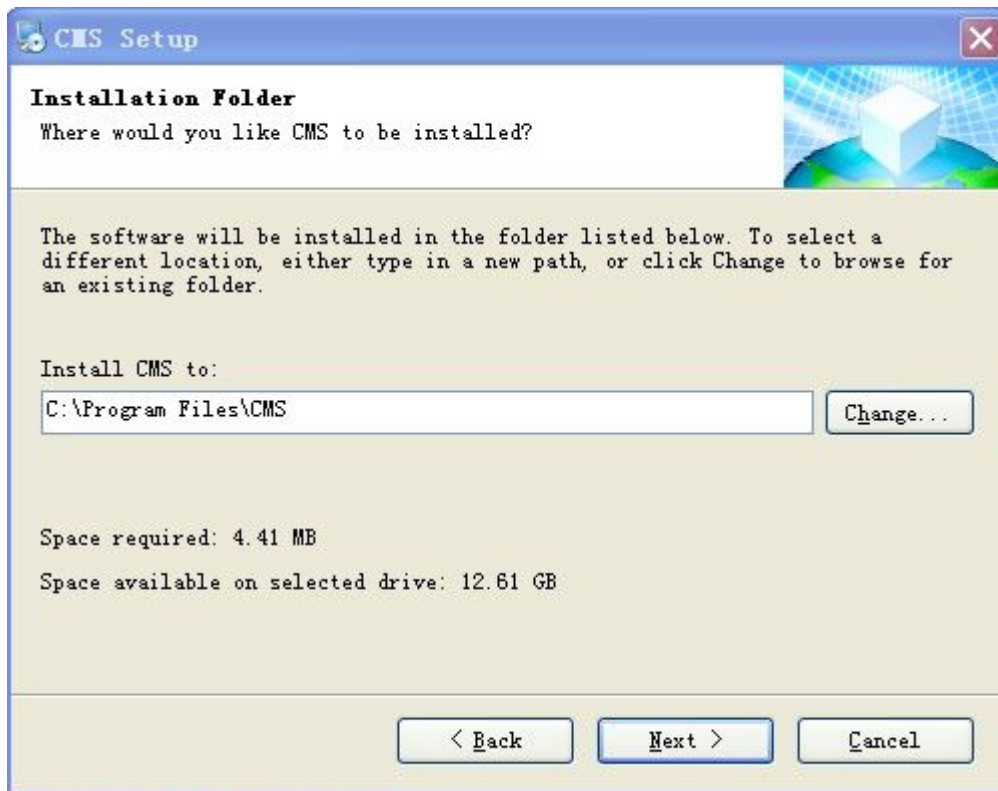
-  CPU: Dominant Frequency 1.0G or above.
-  RAM: 512Mb or above.
-  Video Card: Support Direct10X.
-  Operation System: WINXP;WIN7 Ultimate(Administrator).

## II .Installation

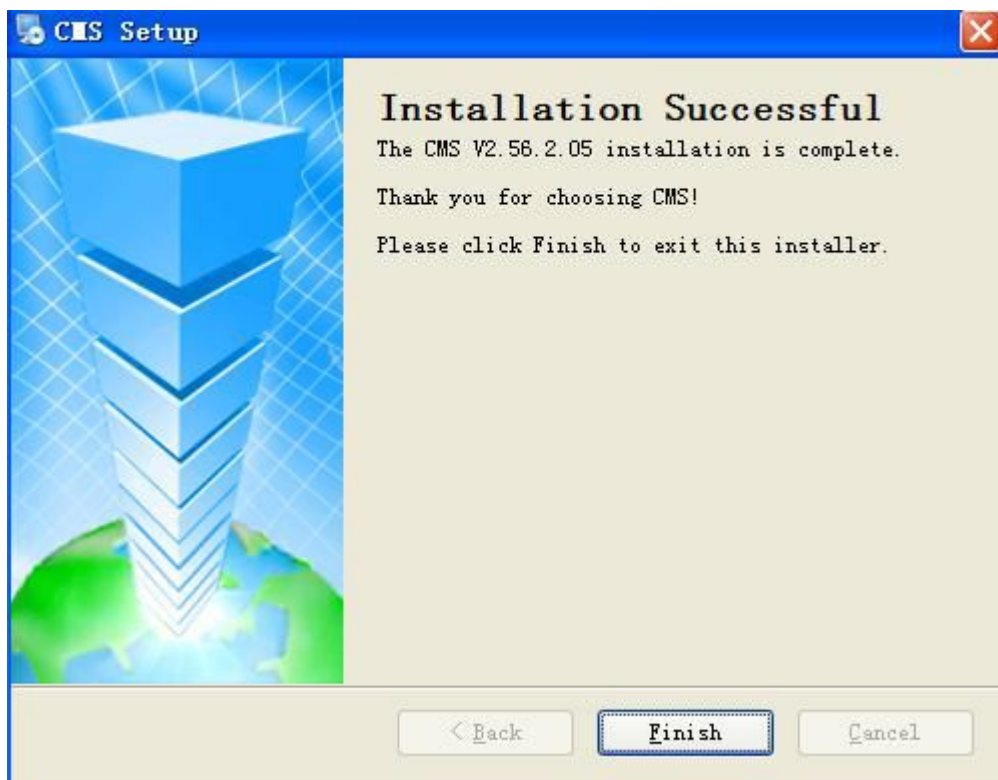
Please Copy the software to your computer from the CD(packing together with the mobile DVR), double click "CMS V2.56.0.5 EN.exe" to start installation, showing as below:







Follow the instructions, Next, Next,, till installation finished.



### III. Software guider

#### 1) Start SW

To start the Software, simply click “Start –Procedure –CMS–CMS”. Or double click the “CMS” Icon on the desktop of the computer.

#### 2) Login

After starting the Software, showing Log-in Windows as below:



```
Telnet
Server: 122.13.152.212
Port: 9001
Name: admin
Pass: *****
Login      Exit
```

“Server”: Domain Name or IP address of the Sever.

“Port”: 9001(Defaulted, no need to change).

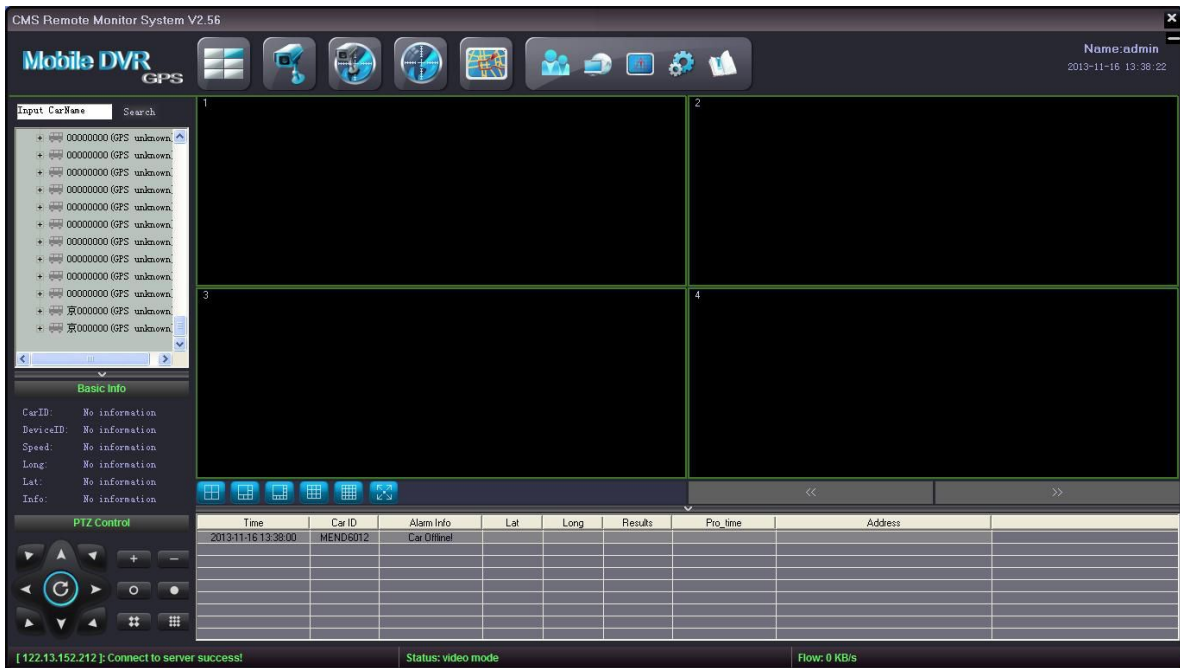
“Name”: hesi (Defaulted, no need to change).

“Pass”: hesi (Defaulted, no need to change).

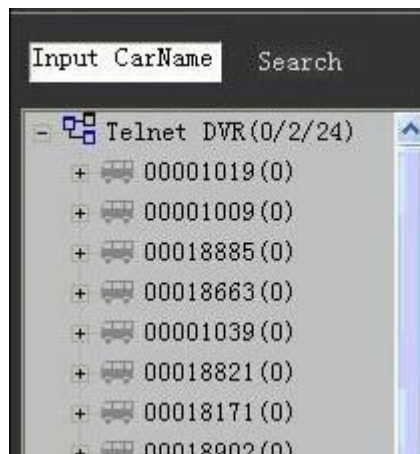
**Remarks:** If use our server, our Server IP addresses are as below:

122.13.152.212 (WCDMA)

When finished, Click “Login”, showing as below:



The vehicle list showing at left side of the software as below:



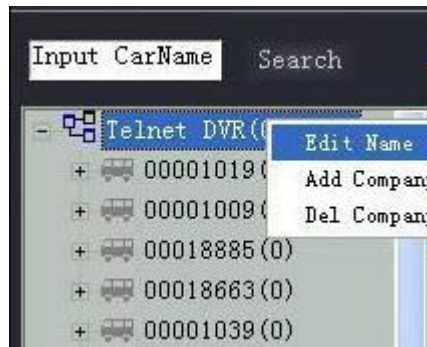
Blue colour means on-line vehicles, Gray colour means off-line vehicles.

You can input the Car ID to “Input Car name” and click “Search”to search the vehicle you need.

### 3) Vehicle infomation edit

Click the first grade MENU tree, then right click it, you can see the editable items as below:



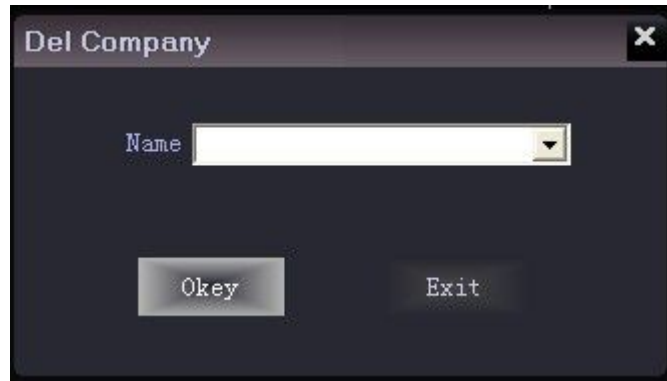


Click "Edit Name", it shows interface as below, then company name can be edited.



Click "Add/Del company", the below interface will be showed. Then subsidiary company name can be added or deleted





Left click the vehicle name and then right click it, you can check the car info, click car info, the interface is as below:



In this item, the user can enter the relevant information and select the vehicle company according to their own management needs. "Device ID" is the serial number of the mobile DVR which has been setted in the factory, it can be identified automatically by the system when login, can not be changed and is unique; "Car ID" was setted in the mobile DVR, it can not be changed from the CMS. Vehicles can also be incorporated into their respective companies and their respective regions (electronic fence).

#### 4) PTZ and Basic info

PTZ: Long-distance PTZ control.

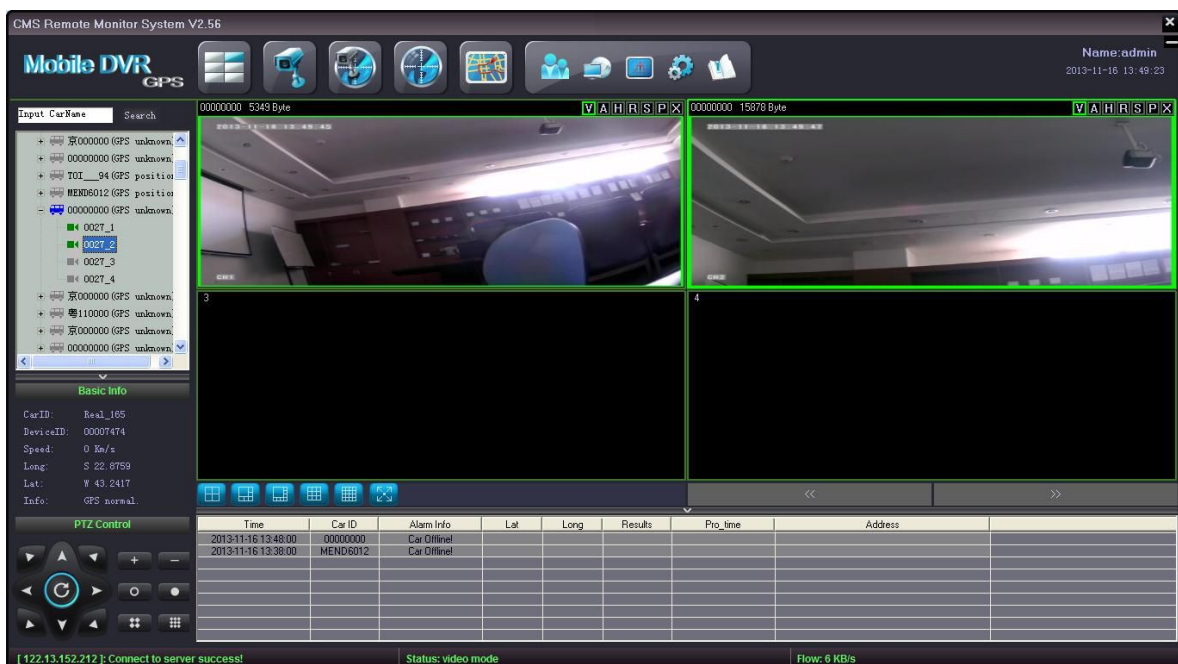
Basic info: Show the car info of the vehicle selected.



If it is no need to display these two items, just click "^" symbol to retract them.

#### 5) Preview

Click the corresponding video channel of the vehicle, you can see the corresponding video.



The real-time of the videos has relationship with the network environment and the

server center bandwidth.

To zoom-in display one Single channel, simply double click this channel, and double click again to return 4/6/8/9/16 channel display. (The software is applicable to 4/6/8/9/16/32 channel display. These videos can be from one DVR or from several different DVRs. And you can choose 4/6/8/9/16/32 channel display by clicking the corresponding icon at the bottom of the windows. To view 17-32 channel videos, just need to click the page up/down button).



: 4/6/8/9/16/full windows selecting button.



: Page up/down button.

### 9 channel display:



The screenshot shows the CMS Remote Monitor System V2.56 interface. The main display area is a 3x3 grid of video channels. The top-left channel (1) shows a car interior with a speedometer and a gear shift. The top-middle channel (2) shows a car interior with a speedometer and a gear shift. The top-right channel (3) shows a car interior with a speedometer and a gear shift. The middle-left channel (4) shows a car interior with a speedometer and a gear shift. The middle-middle channel (5) is black. The middle-right channel (6) is black. The bottom-left channel (7) is black. The bottom-middle channel (8) is black. The bottom-right channel (9) is black. The interface includes a search bar, a list of car IDs, a basic info section, a PTZ control section, and a table of alarm events.

Time	Car ID	Alarm Info	Lat	Long	Results	Pro_time	Address
2013-11-16 14:01:00	00000000	Car Drift					
2013-11-16 13:48:00	00000000	Car Drift					
2013-11-16 13:38:00	MEND6012	Car Drift					




### Single channel display:



## 6) Toolbar




There is toolbar at the upper side of each video channel, the definition of the toolbar is as below:

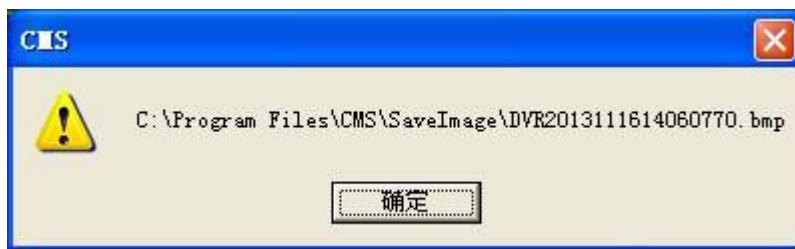



-  Click on the "V" icon, icon border will be displayed in green. The software default into each channel of video is automatically turned on. If you do not want to see the video, just click the "V" icon, then the border of "V" turns to gray.
-  Click on the "A" icon, icon border will be displayed in green. If the corresponding channel has audio, it will be turned on. If you want to turn off the audio, just need to click "A" icon again, then the border of "V" turns to gray.(Just one channel audio can be turned on at one time).
-  Click on the "H" icon, icon border will be displayed in green. The corresponding vehicle information such as HDD info, over-speed info, alarm info etc. will be

displayed at the bottom of the software. And also the speed will be displayed on the videos behind the car ID number.


**Tip: The GPS function can be used in vehicle realtime location, more info is available in part “ Vehicle Remote Location”**

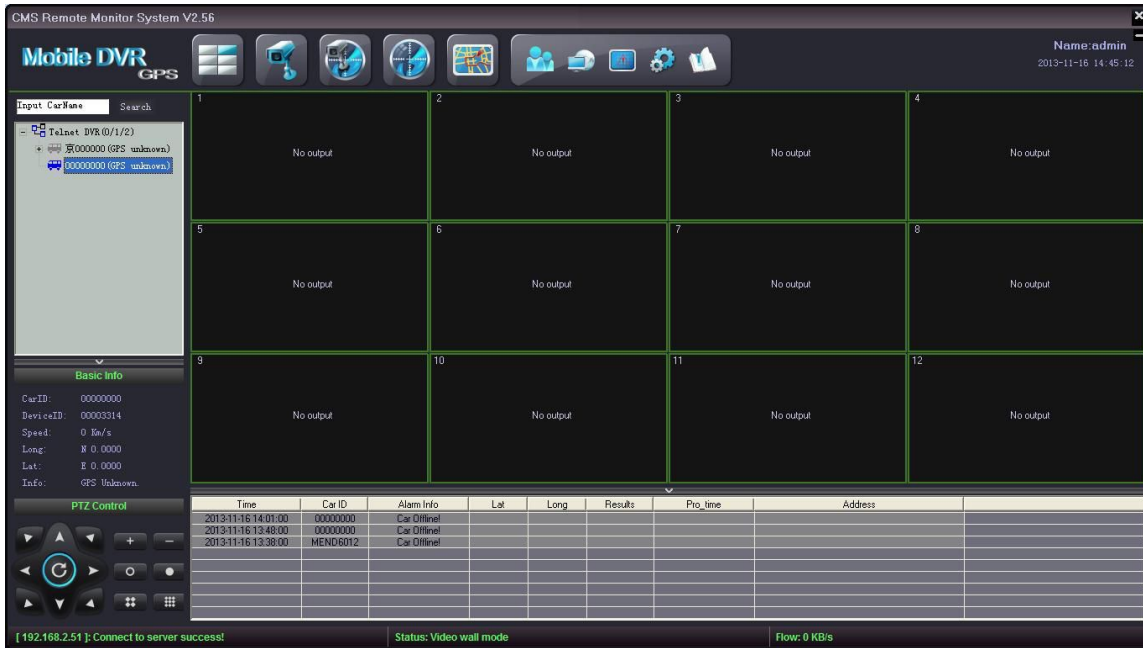
-  Click “R”, it turns green, then you can make remote record which will be saved in the local disk of the client computer, usually C:\Program Files\CMS\SaveRecord, but it depends on the specific place you install the CMS.
-  Click “S”, it turns green, then people in center can talk with the driver if microphone and speaker are equipped.
-  Click “P”, it turns green, then you can take a picture which will be saved in the local disk of the client computer, usually C:\Program Files\CMS\SaveImage, but it depends on the specific place you install the CMS.




-  Click “X”, close the current video channel.

## 7) TV Wall

Our this CMS software supports video output control function, click  TV Wall menu, the videos will be displayed on different monitors or display walls. (Extra hardware is requested for such function)




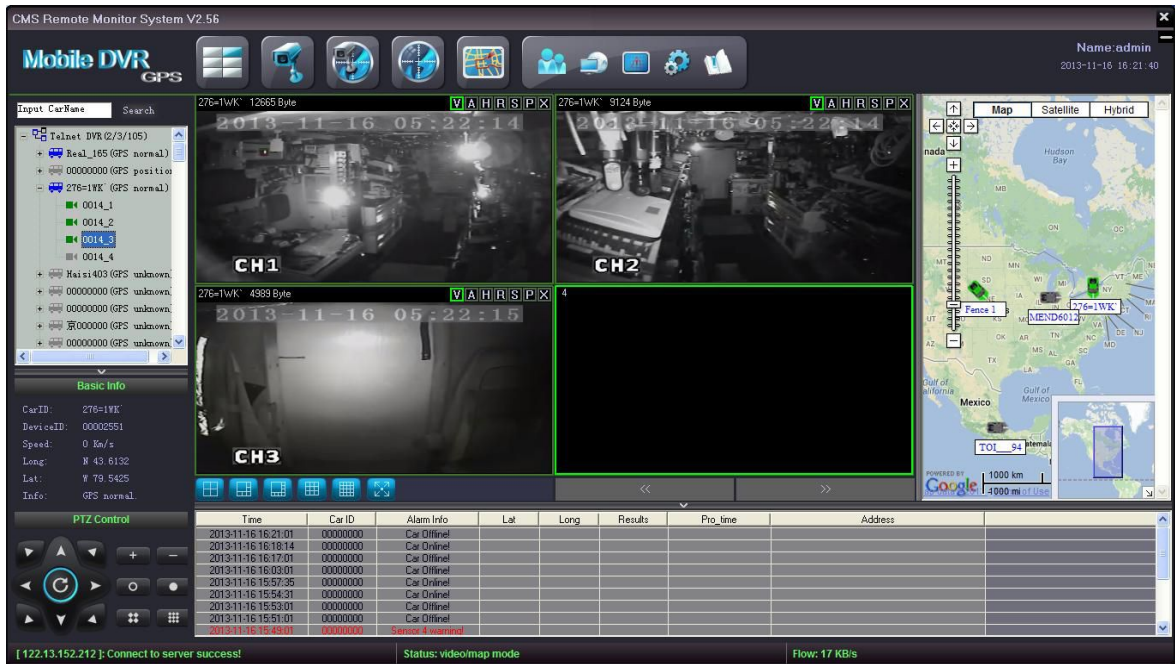
## 8) Video

Click on the “Video”  icon ,the current interface display only video window .



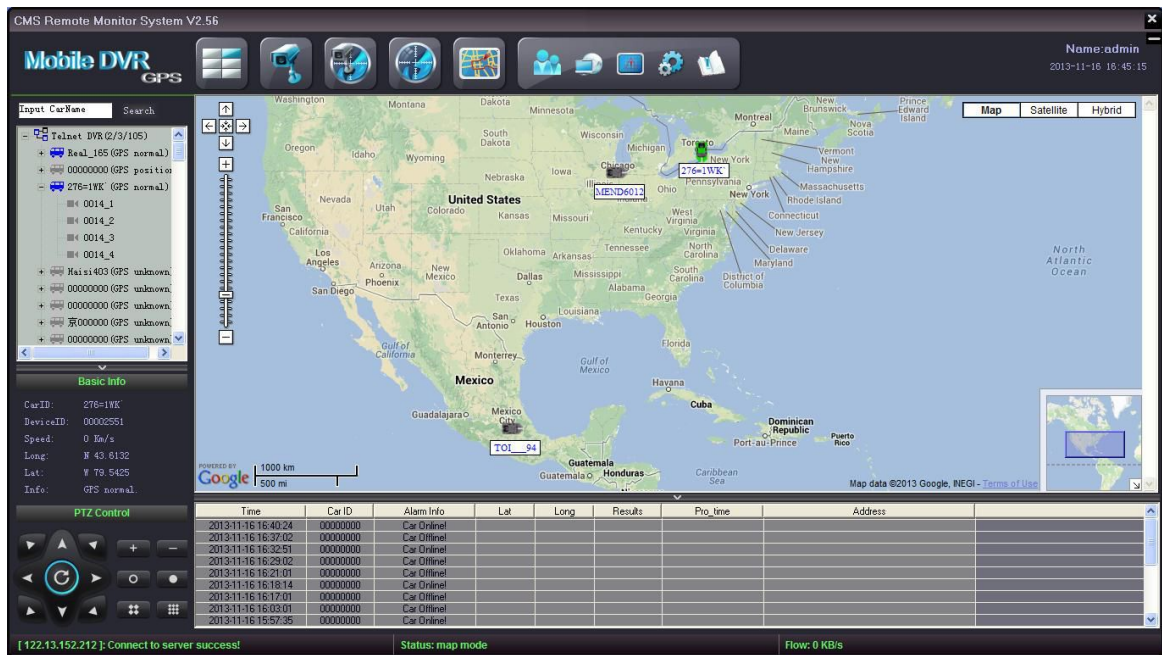
## 9) Video/Map

Click on the “Video/Map”  icon ,the current interface display video window and a maps.



## 10) Map

Click on the "Map" icon, interface will display a separate maps. see below:



## 11) Historical Route Check

The GPS data would be sent to the server end automatically and get saved when the DVR starts to work. The historical GPS route in 3 months can be checked by

click the "Track" icon in the CMS, see below image:






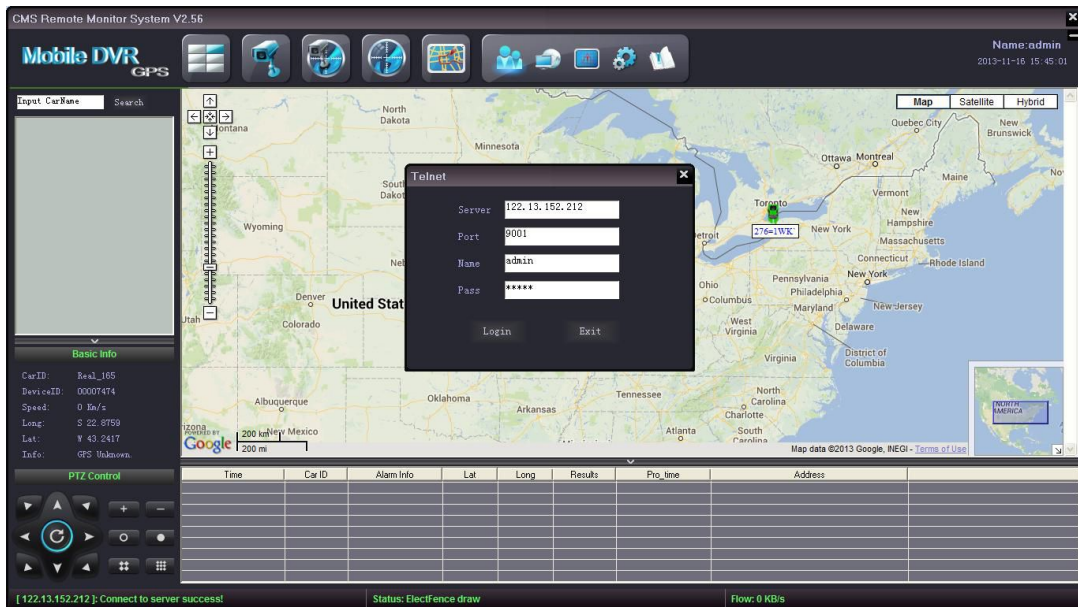


In the small window, choose the “Car ID”,

Select the “Start Time” and “End Time”, then click “Get” or “Stop” Or “Clear” according to customers’ needs


## 12) Telnet

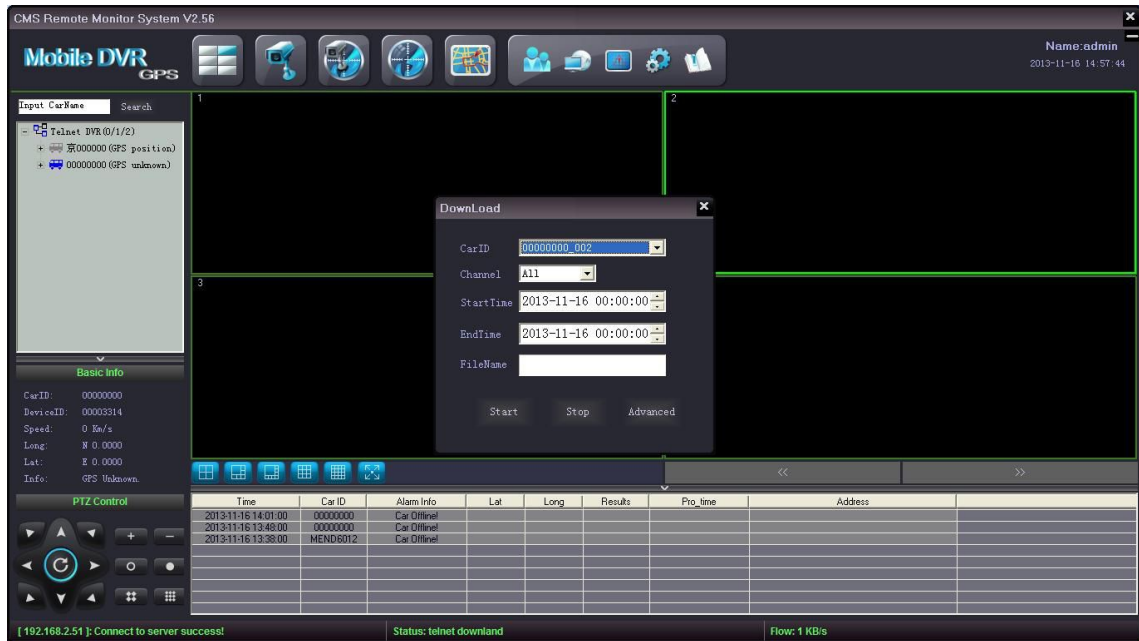
Click  “Telnet” menu, change to another account to log in CMS or to other server.



## 13) Download

The CMS supports recorded videos remotely download in DVR HDD, click

“Download” , it would appear below interface:



Choose the “Car ID”;

Select channel among 1-8 that needs to be download or all channels

Set the “Start Time” and “End Time”;

Input the “File Name” for the video needs to be download;

Then click “Start” to download, customer can stop it during the process. The videos would be stored in the file where CMS installed.


Click “Advanced” it would appear the auto download setting interface, see below:



Choose “Enable auto download” and input the time range (max 180 mins) and then save the setting. When the CMS detects the working DVR, it would download the

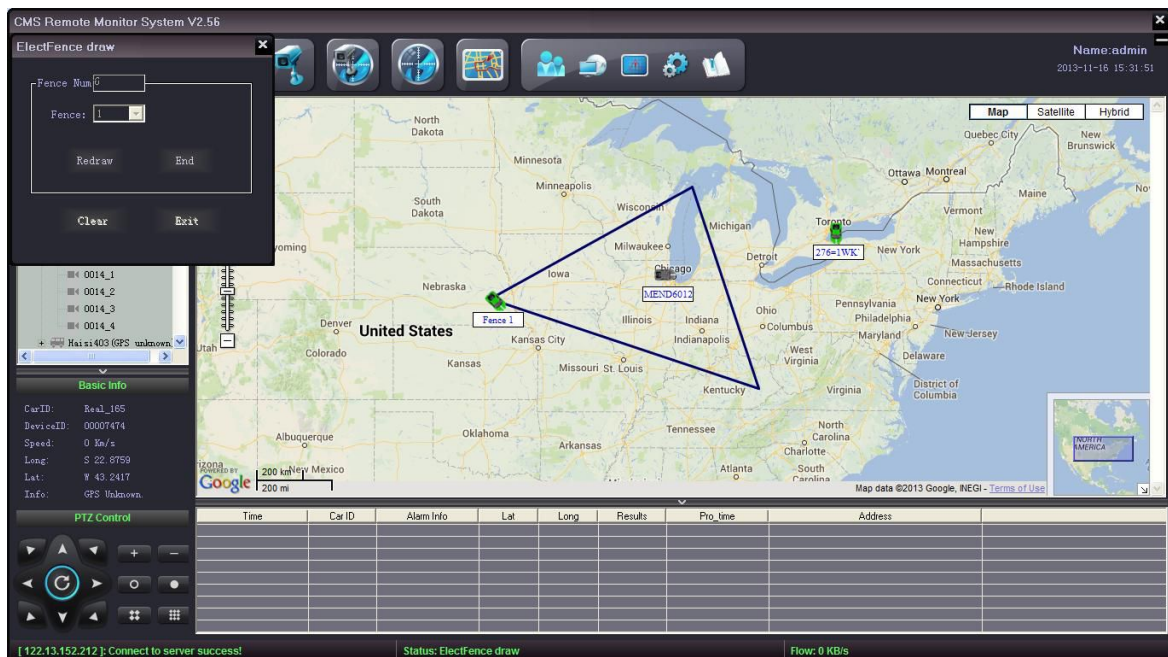
recorded videos from the past time range. For example, if the time is 30mins, the time when CMS detects the DVR at 10:00am, then it will download recorded videos from 9:30am to 10:00am.

#### 14) Elect Fence setting

click "ElectFenc" , it would appear below interface:



In the "Fence Num" , filling in the region quantity(6pcs maximum) you want to draw ; then choosing a region in the "Fence" and click "Redraw", as follows :



In the above map , you could see "Fence1" drawing is done , then click "End" to go on drawing other fences;

"Clear" button intends to hide drawing fence . If you want to delete one drawing fence , you need choose that fence in "Fence" , click "Redraw" then "End" , it will shows ,

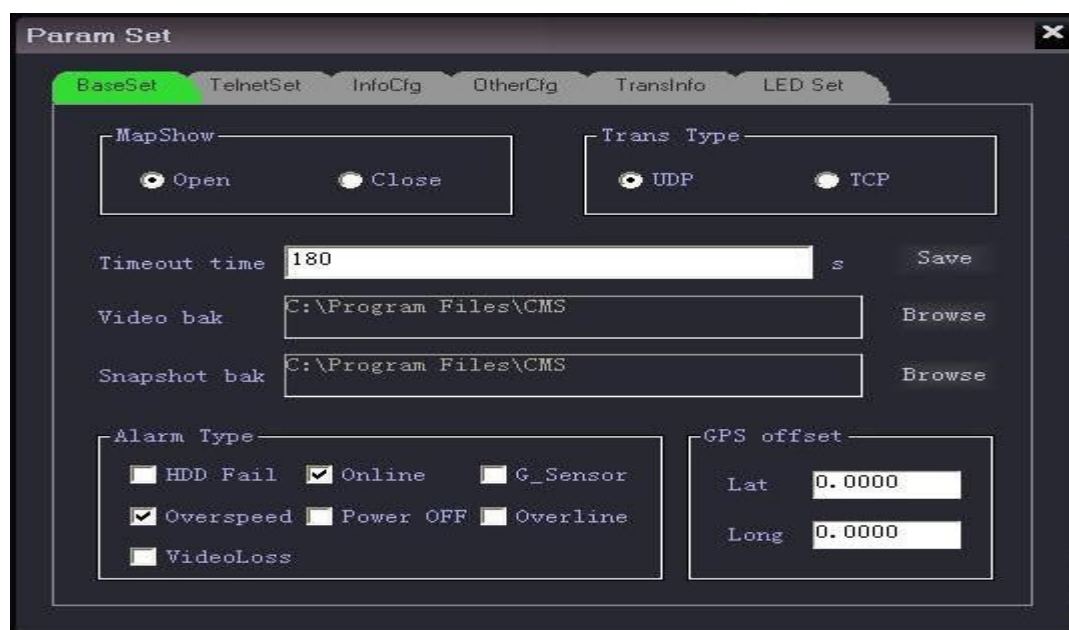


Click "OK" , that drawing area will be deleted successfully .

One time in a minute , it will show "vehicle crossing a line" alarm message .

## 15) Remote Setting

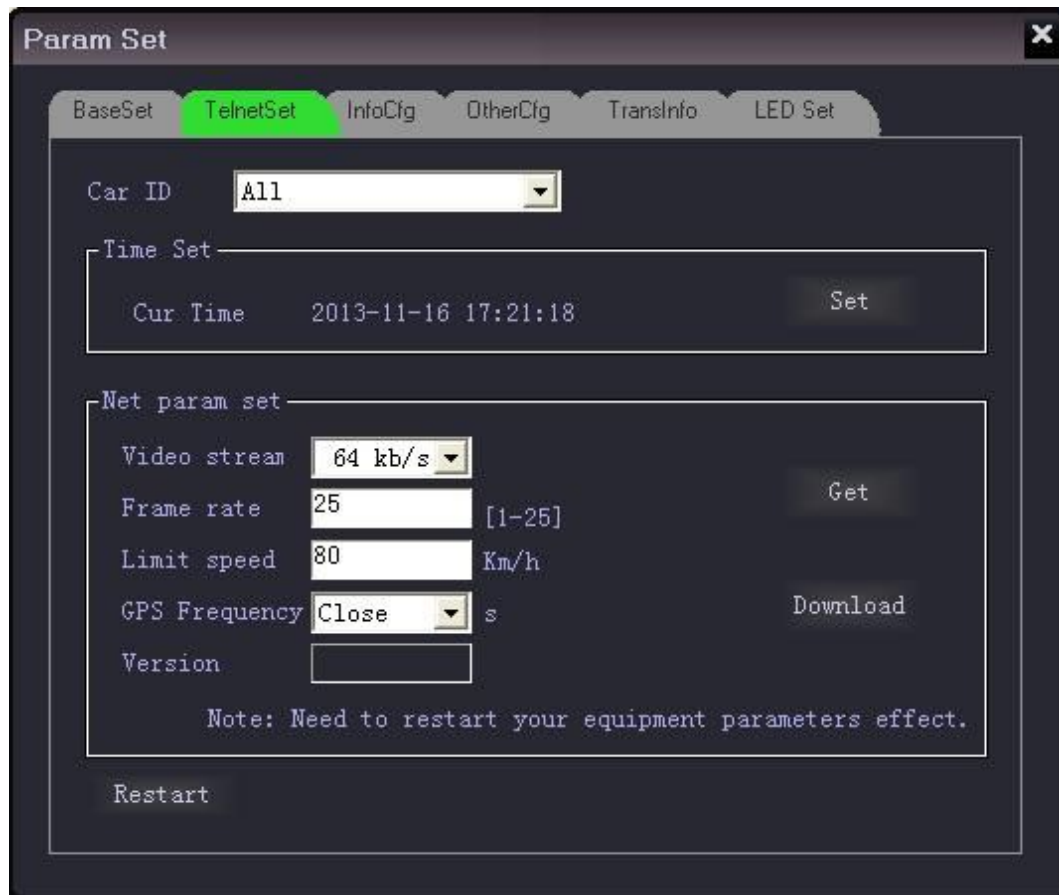
The CMS supports basic setting, remote setting,info cfg, other cfg, trans info and LED set for the DVR, check below:



**Basic setting:**

Open or close the map tracking; Set internet transmission protocol; Set the timeout limit of system operation; Set the store file for the recorded videos, store file for snapshot, alarm type setting and GPS data adjusting.

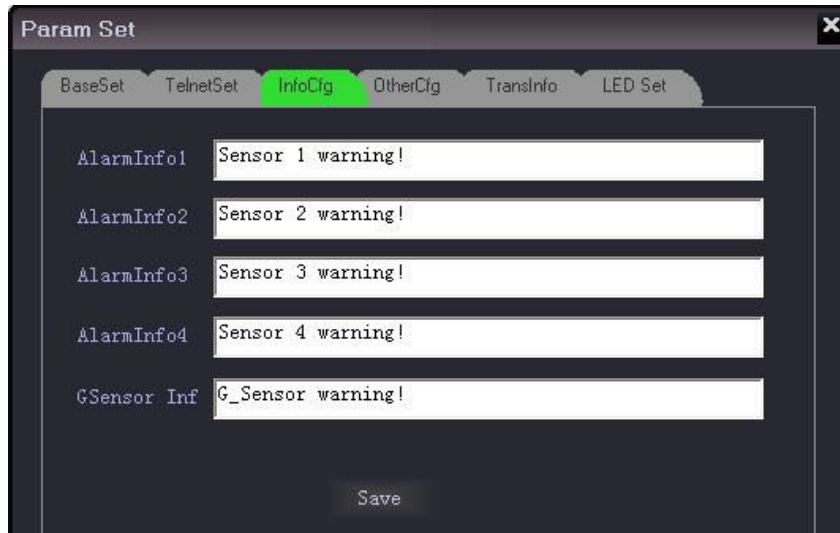
**Remote setting:**



- (a).select the “Car ID”
- (b). “Time set” the timing is in accordance with the time of the computer by which the CMS opened.
- (c). “Net param set” , customer can get the original parameters of the DVR or set the new ones remotely, after set the new ones, customers need to click the “restart” to make the setting come into effect.

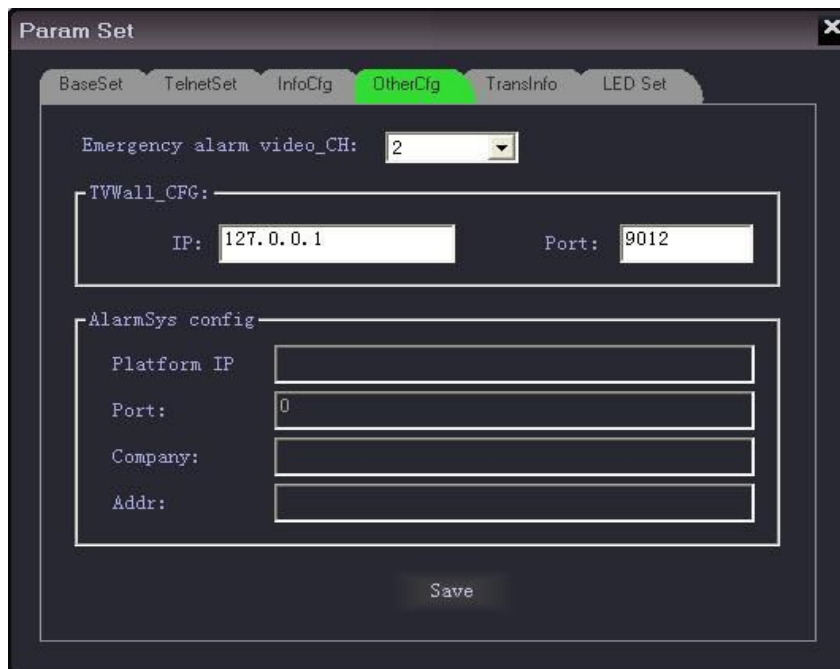
**Info cfg:**

Alarm information or various notice can be configured.



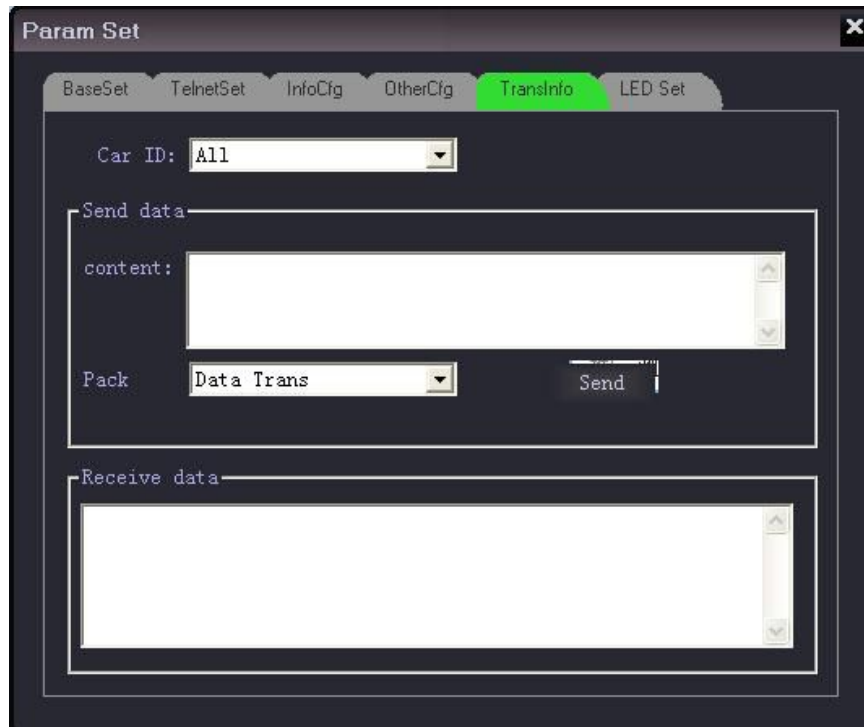
**Other cfg:**

Set the video channel when alarm triggered, IP and port number of the linked Digital matrix and alarm system platform config.



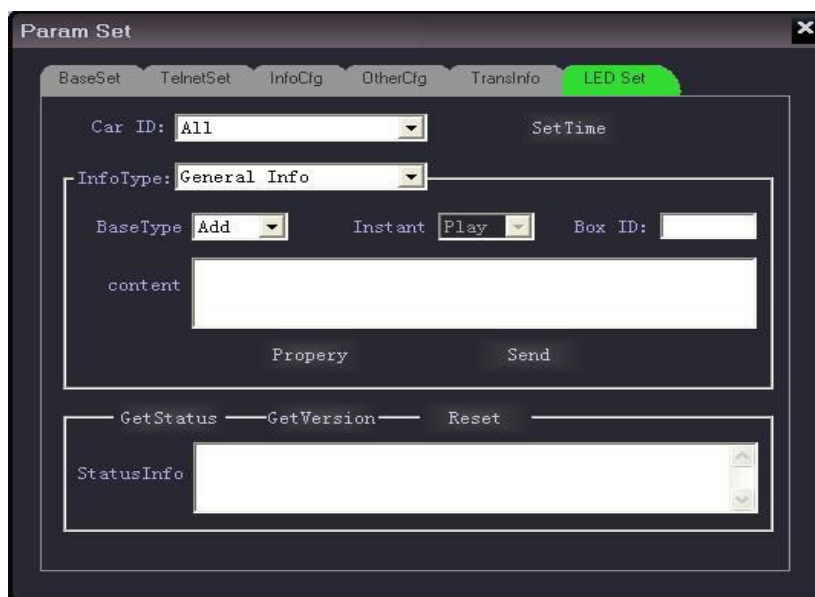
**TransInfo:**

Set the trans data content and data pack format.



**LED set:**

Send word SMS to the LED connected with DVR by selecting Car ID; SMS type are including 3 types: instant Info, General Info, Default Info. Input message into the Content window; Click “property”, set the show mode, Speed, Stop time, Font, Play time, Life circle, Time period etc; Click “Send”, then the message will be sent to the LED of the right car. Please check below pic:




**Instant Info:** it is mostly used for publishing urgent or instantly displayed message(It is published in priority by cutting off other Info), set the Play times, Exit Mode, Time

Period in "Property" menu.

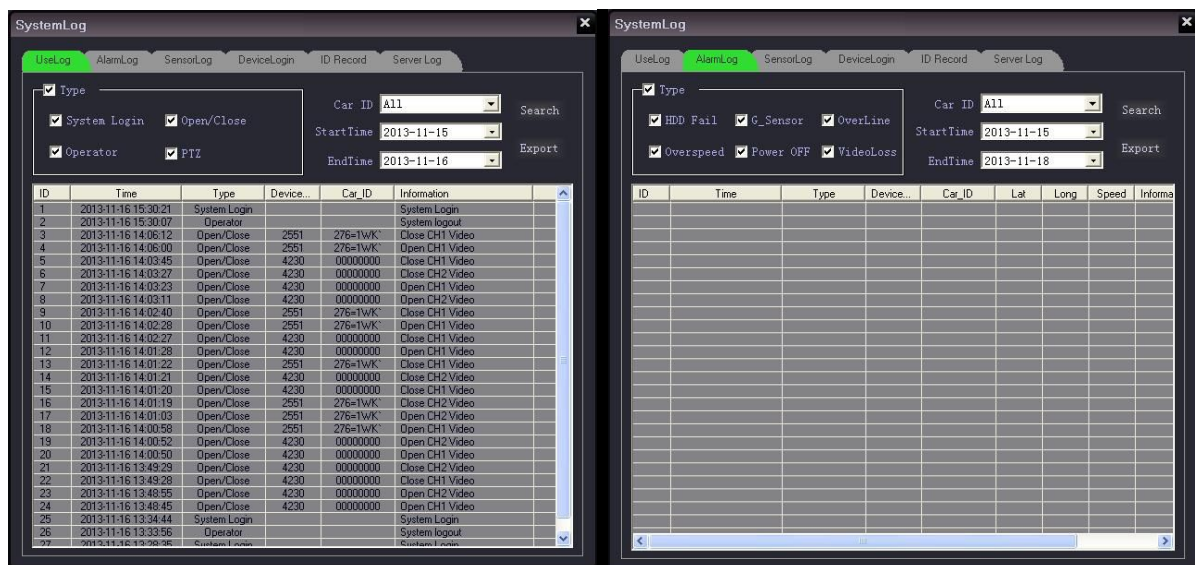
**General Info:** 256 pcs General Info can be set( SMS serial number0-255) in this CMS software, set the Life Circle and Time period in "Property"

**Default Info:** The information is displayed When there is no Instant Info or General Info, set the System Time or Default Info in "Property".

## 16) Log information of system

Click "Log" , then you can search for related log information(Userlog、Alarmlog、Sensorlog, Device log, ID records, Server log etc.

User Log: Select the "Type", "Car ID", "Starttime", "Endtime", click "Search", then the User operation records of this CMS will be queried. Please check below pic:

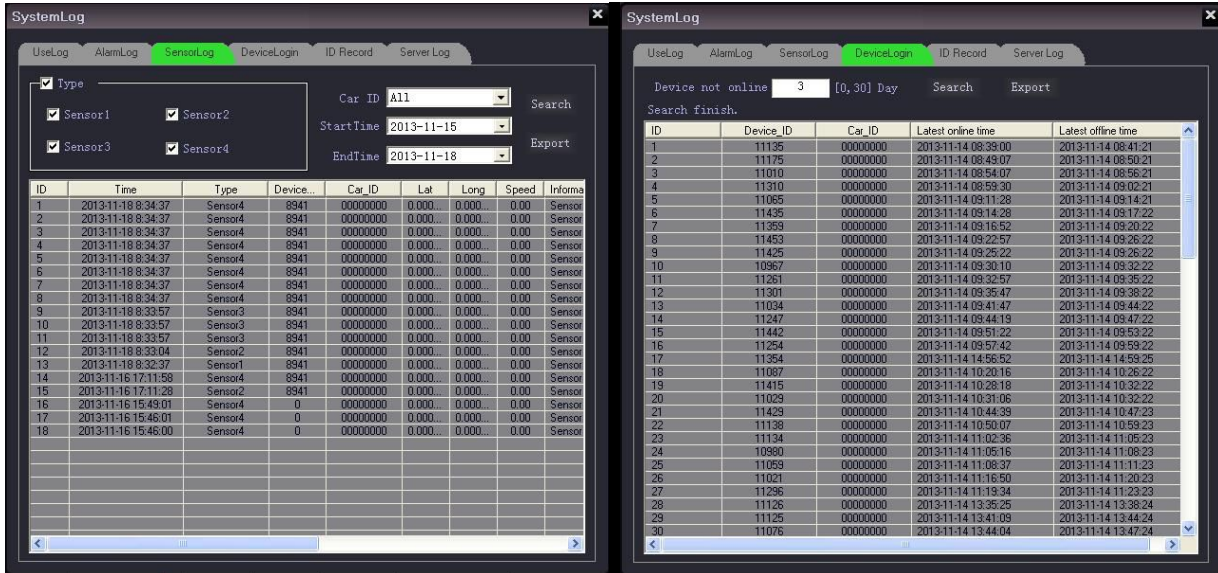


ID	Time	Type	Device...	Car_ID	Information
1	2013-11-16 15:30:21	System Login			System Login
2	2013-11-16 15:30:07	Operator			System logout
3	2013-11-16 14:06:12	Open/Close	2551	276=1WK	Close CH1 Video
4	2013-11-16 14:06:00	Open/Close	2551	276=1WK	Open CH1 Video
5	2013-11-16 14:03:45	Open/Close	4230	00000000	Close CH1 Video
6	2013-11-16 14:03:27	Open/Close	4230	00000000	Close CH2 Video
7	2013-11-16 14:03:23	Open/Close	4230	00000000	Open CH1 Video
8	2013-11-16 14:03:11	Open/Close	4230	00000000	Open CH2 Video
9	2013-11-16 14:02:40	Open/Close	2551	276=1WK	Close CH1 Video
10	2013-11-16 14:02:28	Open/Close	2551	276=1WK	Open CH1 Video
11	2013-11-16 14:02:27	Open/Close	4230	00000000	Close CH1 Video
12	2013-11-16 14:01:28	Open/Close	4230	00000000	Open CH1 Video
13	2013-11-16 14:01:22	Open/Close	2551	276=1WK	Close CH1 Video
14	2013-11-16 14:01:21	Open/Close	4230	00000000	Close CH2 Video
15	2013-11-16 14:01:20	Open/Close	4230	00000000	Close CH1 Video
16	2013-11-16 14:01:19	Open/Close	2551	276=1WK	Close CH2 Video
17	2013-11-16 14:01:03	Open/Close	2551	276=1WK	Open CH2 Video
18	2013-11-16 14:00:58	Open/Close	2551	276=1WK	Open CH1 Video
19	2013-11-16 14:00:52	Open/Close	4230	00000000	Open CH2 Video
20	2013-11-16 14:00:50	Open/Close	4230	00000000	Open CH1 Video
21	2013-11-16 13:49:29	Open/Close	4230	00000000	Close CH2 Video
22	2013-11-16 13:49:28	Open/Close	4230	00000000	Close CH1 Video
23	2013-11-16 13:48:55	Open/Close	4230	00000000	Open CH2 Video
24	2013-11-16 13:48:45	Open/Close	4230	00000000	Open CH1 Video
25	2013-11-16 13:34:44	System Login			System Login
26	2013-11-16 13:33:56	Operator			System logout
27	2013-11-16 13:28:36	System Login			System Login

Alarm Log: Select the "Type", "Car ID", "Starttime", "Endtime", click "Search", then the Alarm information uploaded to CMS will be queried. Please check above pic:

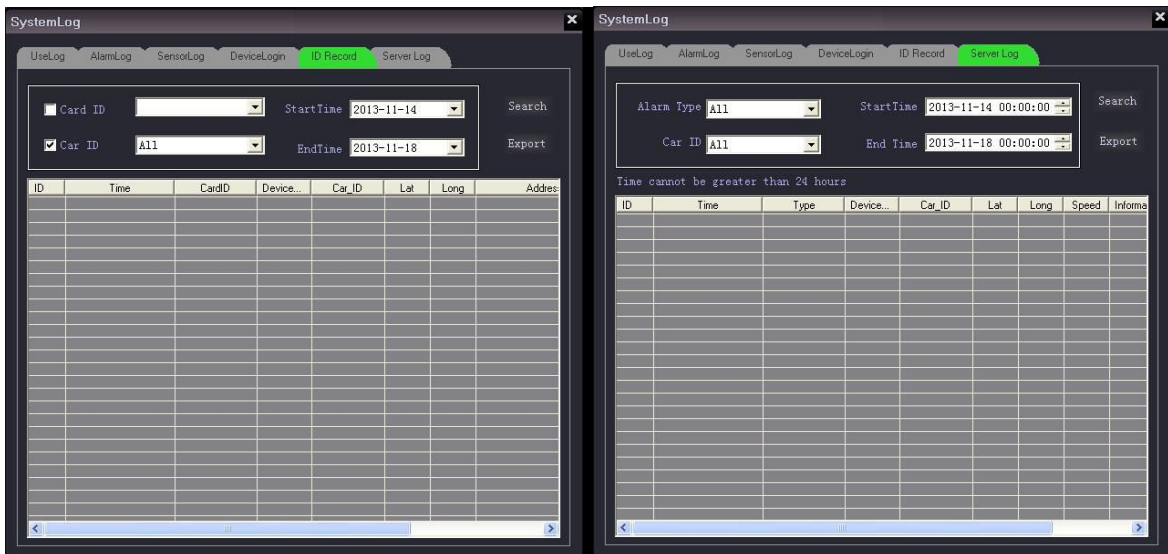
Sensor Log: Select the "Type", "Car ID", "Starttime", "Endtime", click "Search", then the urgent alarm information will be queried. Please check below pic:





**Device Login:** Click “Search” to get the DVR logging into Server records within the past 30 days

**ID Record:** Select “Card ID”, “Car ID”, “Starttime”, Endtime, Click “Search”, then the ID user records will be queried. Please check below pic:

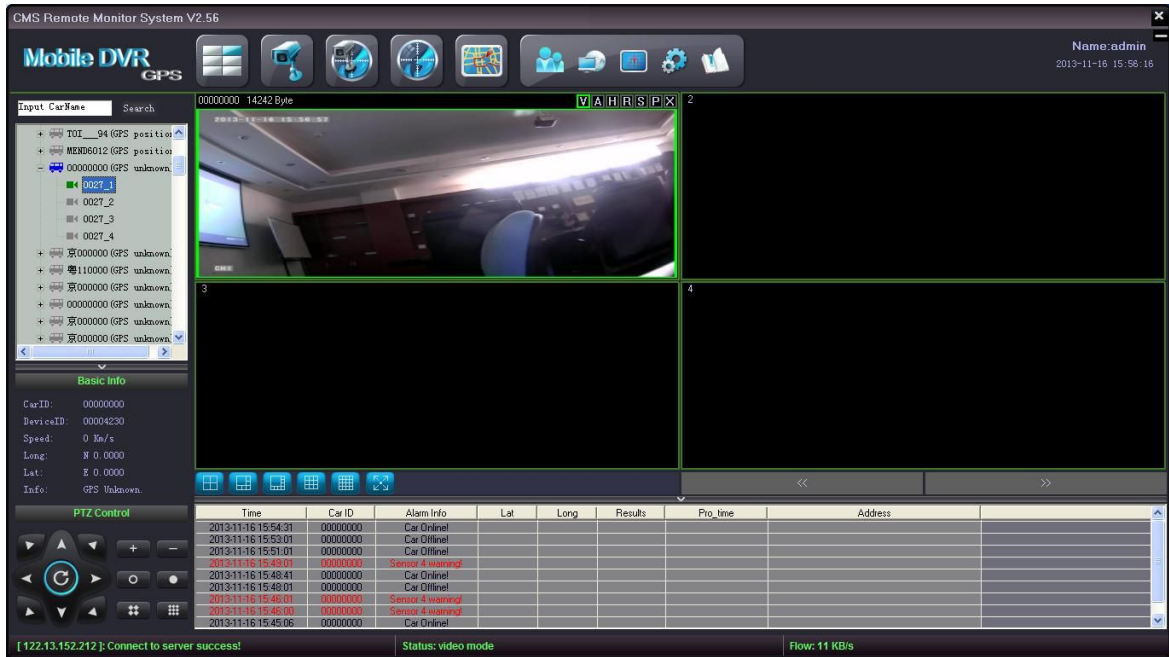


**Server Log:** Select ”Type”, “Car ID”, ”Starttime”, “Endtime”, click”search”, then the server log within 24 hours will be queried.

### Infobar

The CMS platform can receive the data like Harddisk detecting, over speed, external panic button or other sensor alarm information from remote devices. When receiving alarms, there would be red color messages showing in the bottom window ( the messages from DVR are in red color and the ones from CMS by click

“H” are in black) , see below:



This CMS platform supports 4-channel alarm signals at the same time (1 channel alarm only from each DVR). When the CMS receives the alarm signal from a DVR/vehicle, it would show the related alarm channel video (set in the configuration file) and the GPS location in the Google map, also it would start the intercom function as well as the 10seconds alarm record. People in the managing center can give commands remotely, check below:

