

GETTING STARTED WITH FORESIGHT-SD

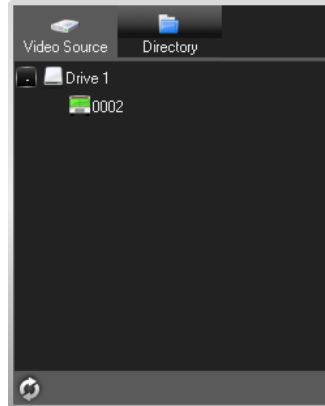
Video Playback

1. Start Foresight-SD and ensure the SD card is correctly inserted into an SD card reader attached to your PC.
Due to the unique partitions present on the SD card, video must be opened directly from the SD card, or from files exported directly by Foresight-SD.

2. Use the Video Source or Directory tab to locate the video you want to playback.

Attached SD cards appear as drives in the Video Source tab. Expand the tree control to view the video segments available on the SD card.

To view previously exported video present on your PC, use the Directory tab. Click the + icon and navigate to where your video segments are saved.



3. Double click a video segment.

Calendars appear for each month during which video was recorded. (Click the top of a calendar to expand it for a larger view.) Individual days during which video was recorded are highlighted in green. Event video is highlighted in red.

4. Double click a highlighted day.

Video playback begins automatically.



The Playback Control Bar represents 24 hours in a day. Recorded video appears highlighted in green according to the time it was recorded. Focus on smaller time frames (12 hours, 6 hours, and so on) by clicking the magnifying lens icon on the lower right.

Event, Sensor activation, Speed, and Accelerometer data can be selected from the list to the left of the Playback Control Bar. GPS coordinates appear on a map to the right of the video display area. Playback controls, such as fast forward, rewind, and pause, are located under the Playback Control Bar.

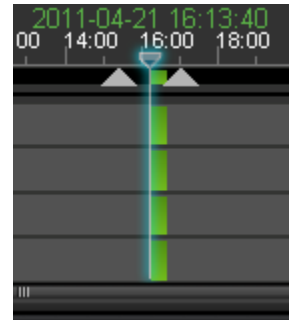
Exporting Video

1. Open the video you want to extract a video clip from as described in the previous procedure.



2. Click the Scissors icon to the right of the playback controls.

Two triangles appear on the Playback Control Bar.



3. Drag the triangles to the beginning and the end of the clip you want to export.

4. Click the check or the Mini-Player icon.

Click the check icon to export a raw H.264 file. This export process may be faster, but the resulting exported clip can only be read by Foresight-SD. Click the Mini-Player icon to export the video clip into a MiniPlayer file. This export process may take longer, but creates an .exe file that can be transferred and played on any computer. The Browse for Folder window appears automatically.

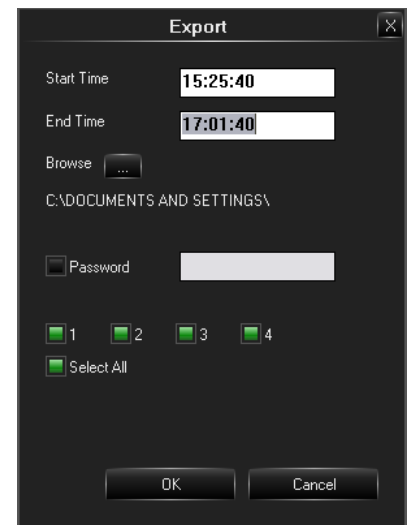


5. Navigate to where you want to save the exported clip and click OK.

The Export window appears.

6. Confirm the exact start and end time for the exported clip. You can also select only certain camera channels to be exported. If exporting a Mini-Player file, the ability to lock the file with a password also appears.

If a password is entered, the same password must be entered when opening the resulting .exe file.



7. Click OK.

A status bar appears as the video clip exports automatically.