

Foresight-SD User Guide



Important Notices

Title: Foresight-SD User Guide

Safety Vision attempts to provide information contained in this manual based on the latest product information available at the time of publication. However, because of Safety Vision's policy of continual product improvement, Safety Vision reserves the right to amend the information in this document at any time without prior notice.

This material is confidential and the property of Safety Vision. It is shared with your company for the sole purpose of helping you with the operation of the described equipment.

Safety Vision makes no warranty of any kind with regard to this material, including, but not limited to, the implied warranties of merchantability and fitness for a particular purpose. Safety Vision shall not be liable for errors contained herein or for incidental or consequential damages in connection with the furnishing, performance, or use of this material.

Safety Vision expressly disclaims all responsibility and liability for the installation, use, performance, maintenance, and support of third-party products. Customers are advised to make their independent evaluation of such products.

No part of this document may be photocopied, reproduced, or translated to another language without the prior written consent of Safety Vision.

Safety Vision® is a registered trademark of Safety Vision, LLC. All other products or name brands mentioned in this document are trademarks of their respective owners. For more information about Safety Vision and its products, go to www.safetyvision.com or call 800-880-8855.

Table of Contents

Minimum Requirements	4
Compatible Recorders	4
Screen Layout	5
Opening a Video	6
Using the Playback Control Bar	7
Exporting Video Clips	8
Using the Mini-Player	9
Exporting Snapshots	10
Software Licensing Agreement	12

Minimum Requirements

- Windows XP Service Pack 3
- Windows 7 (32 and 64 bit)
- Additional or external hard drive storage (recommended for archiving video)

Compatible Recorders

- RoadRecorder® 4C SD series
- SVR-4100 series

Screen Layout

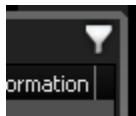


1 - Video Source and Directory Tabs

The Video Source and Directory tabs display available video to be opened and played back. The Video Source tab displays attached SD cards while the Directory tab displays previously exported video segments in user-defined directories.

2 - Event List

The Event List window displays a list of events for easy navigation during playback. The individual columns are adjustable for better readability. Click the funnel icon to open the Filter window and sort events by type. Click on an event to immediately jump to that video.



3 - Main Display Area

The Main Display Area displays the calendar(s) when selecting video to view and then switches to display recorded video and GPS map once playback begins. Use the buttons at the bottom left of the Playback Control Bar to toggle between calendar and video display. Click on the slim arrow buttons on the perimeter to expand the display. Double click on either a calendar or a video channel to expand it to the full size of the Main Display Area.



4 - Playback Control Bar

The Playback Control Bar contains the typical video playback controls such as Play, Stop, Fast Forward, etc. It also displays selected metadata simultaneously with video. For detailed descriptions of the Playback Control Bar's functions, see the *Using the Playback Control Bar* chapter.

Opening a Video

Use the following procedure to view recorded video on an SD card.

1. Start Foresight-SD and ensure the SD card is correctly inserted into an SD card reader attached to your PC.

Due to the unique partitions present on the SD card, video must be opened directly from the SD card, or from files exported directly by Foresight-SD. Click the refresh icon to update the displayed SD cards.

2. Use the Video Source tab to locate the video you want to playback.

Attached SD cards appear as drives in the Video Source tab. Expand the tree control to view the video segments available on the SD card.

3. Double click a video segment.

Calendars appear for each month during which video was recorded. (Click the top of a calendar to expand it for a larger view.) Individual days during which video was recorded are highlighted in green. Event video is highlighted in red. The current date is circled in green.

4. Double click a highlighted day.

Video playback begins automatically.

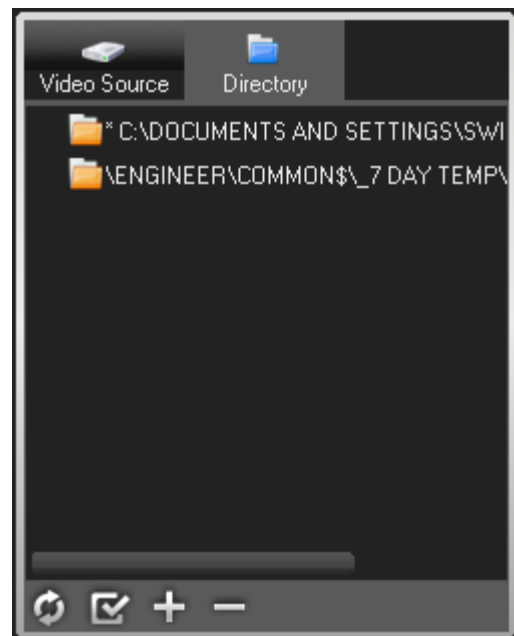


Using the Directory Tab

Previously exported video can be saved in defined directories on your PC or other external source. The location of these directories can be saved in Foresight-SD for easier access.

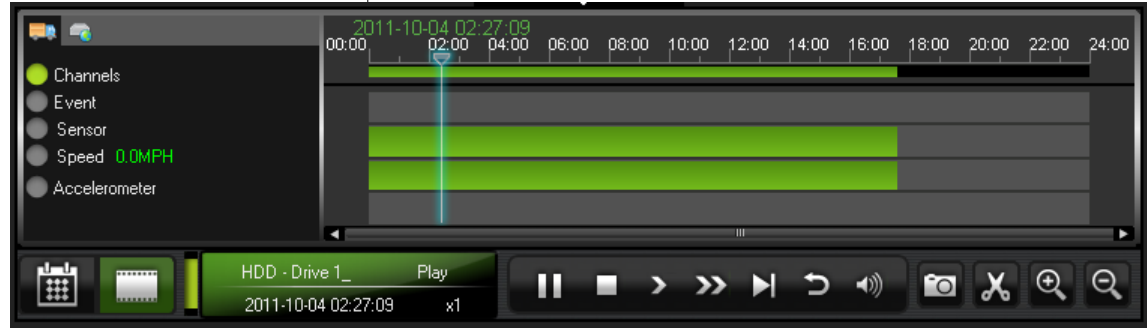
A directory is created automatically when video is exported for the first time. Additional directories can be added by clicking the + icon at the bottom of the Directories tab. Delete saved directories by clicking the - icon. (Deleting a directory in Foresight-SD does NOT delete the video saved in that directory.) Highlight a directory and click the checkbox icon to designate it as default. (A star appears next to it.)

Video saved in directories is opened in the same manner as video on an attached SD card.



Using the Playback Control Bar

The Playback Control Bar represents 24 hours in a day. Recorded video appears highlighted in green according to the time it was recorded. Focus on smaller time frames (12 hours, 6 hours, and so on) by clicking the **magnifying lens** icon on the lower right. Drag the indicator to navigate the video quickly.



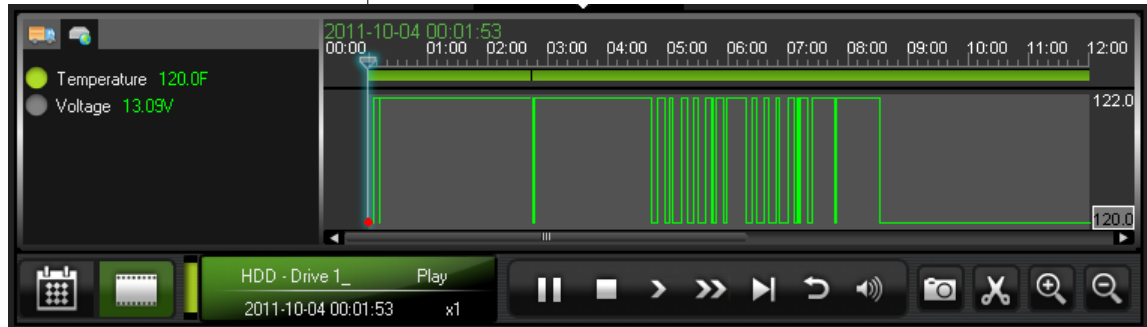
Playback controls, such as fast forward, rewind, and pause, are located at the bottom of the Playback Control Bar. These operate similar to those on a conventional media player. The time and playback speed are displayed in the green area to the left of these controls. Volume can also be adjusted.

GPS coordinates appear on a map to the right of the video in the Main Display Area.

Click on the options on the left of the Playback Control Bar to display metadata. (Depending on the configuration of the DVR that recorded the video, some metadata, such as sensors, may not be available.) The small icons reveal two tabs.

Vehicle Metadata (truck icon)

- Channels (recorded video, default)
- Event
- Sensor
- Speed
- Accelerometer



DVR Metadata (DVR icon)

- Temperature
(internal temperature of the DVR)
- Voltage

Click on a type of metadata to display it automatically on a graph in the Playback Control Bar.

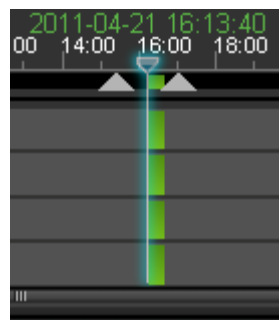
Exporting Video Clips

Use the following procedure to export clips of important video.

1. Open the video you want to extract a video clip from as described in *Opening a Video*.
2. Click the **Scissors icon** to the right of the playback controls.
Two triangles appear on the Playback Control Bar.
3. Drag the triangles to the beginning and the end of the clip you want to export.
4. Click the check or the Mini-Player icon.
Click the check icon to export a raw H.264 file. This export process may be faster, but the resulting exported clip can only be read by Foresight-SD. Click the Mini-Player icon to export the video clip into a Mini-Player file. This export process may take longer, but creates an .exe file that can be transferred and played on any computer. See Using the Mini-Player.

The Browse for Folder window appears automatically.

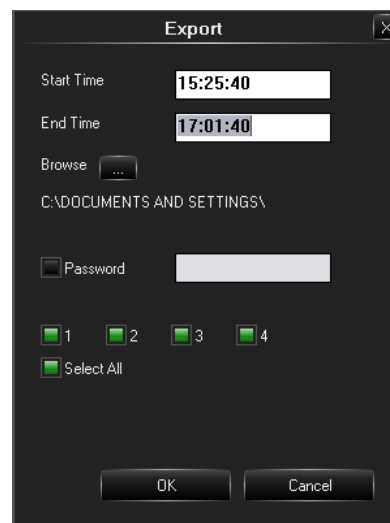
5. Navigate to where you want to save the exported clip and click **OK**.
The Export window appears.
6. Confirm the exact start and end time for the exported clip. You can also select only certain camera channels to be exported. If exporting a Mini-Player file, the ability to lock the file with a password also appears.
If a password is entered, the same password must be entered when opening the resulting .exe file.
7. Click **OK**.
A status bar appears as the video clip exports automatically.



H.264 Export

Mini-Player Export

Cancel



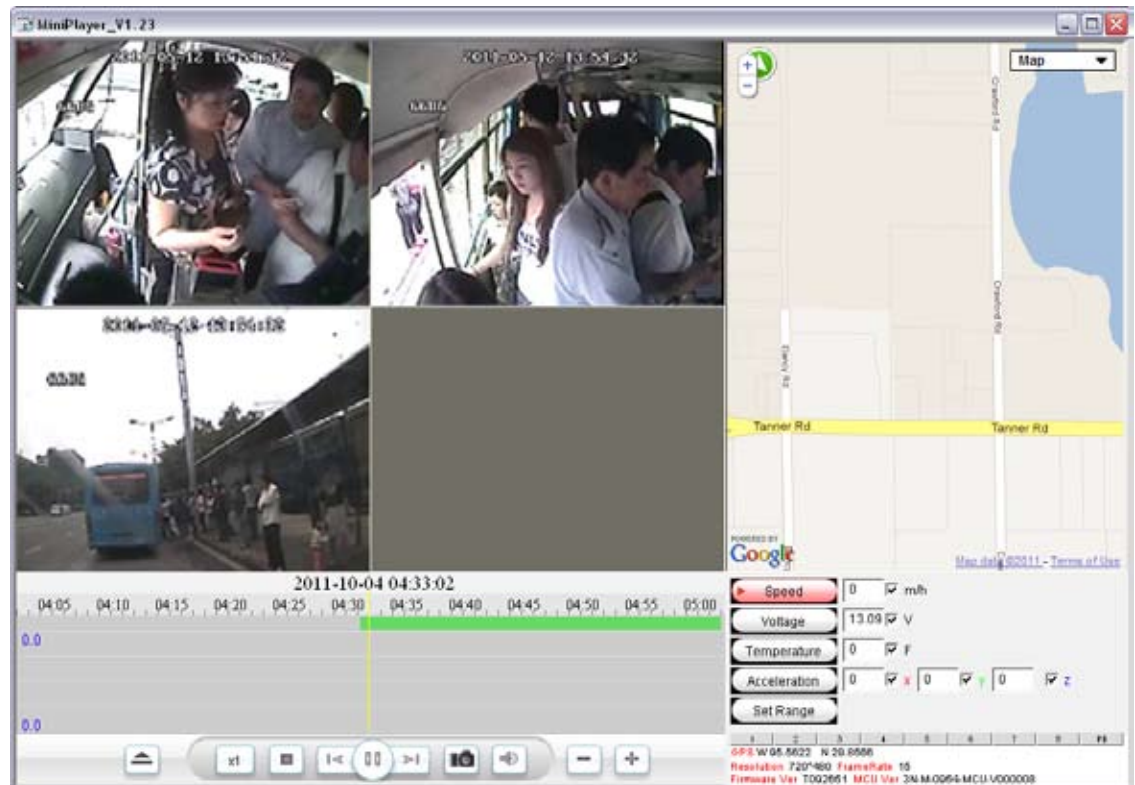
Using the Mini-Player

Exporting a video clip to Mini-Player format creates a Mini-Player .exe file. This file can be transferred and played on any computer. This feature is useful when individuals or agencies request video clips but do not have access to Foresight-SD.



To open a Mini-Player file, simply open it as you would a program. The video begins playback automatically, with an abbreviated version of the Playback Control Bar. (Some adjustment of the Mini-Player window may be necessary to see all of the controls.)

When exporting a Mini-Player file, the ability to lock the file with a password also appears. First select this option and then enter a password. When opening the resulting .exe file, a prompt appears requesting the password. The correct password must be entered in order to open the file and view the video.

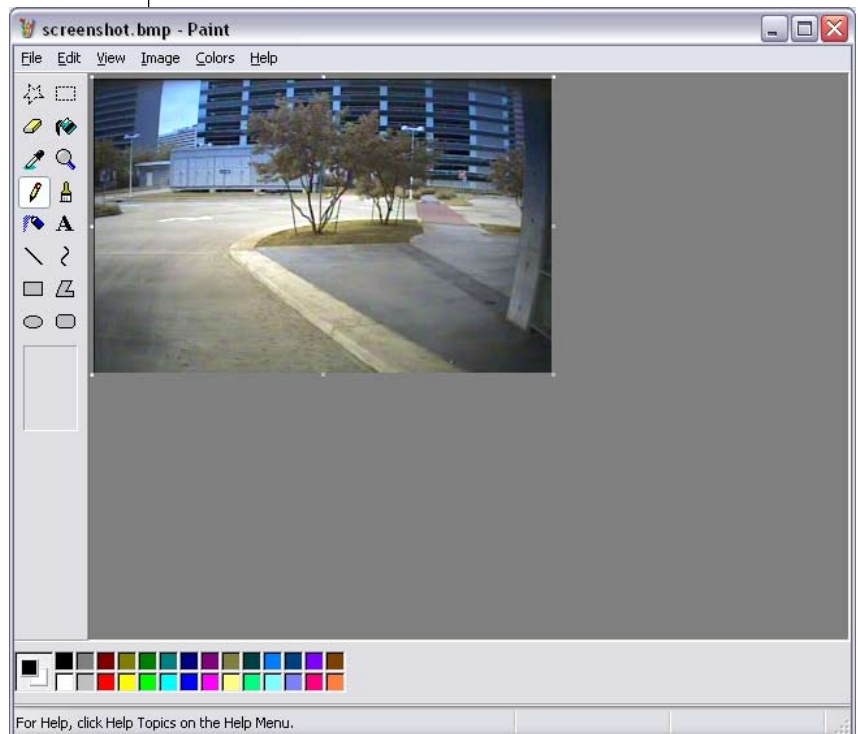
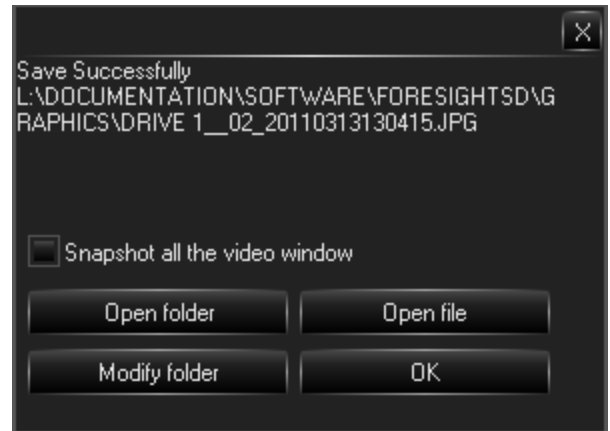


Exporting Snapshots

Use the following procedure to save a snapshot, or individual frame of video, in .jpg form.

1. Open the video you want to extract a snapshot from as described in *Opening a Video*.
2. Use the Playback Control Bar to pause the video on the snapshot you want to save.
3. Click on the video channel in the Main Display Area that displays the snapshot you want to save.
The selected video channel is highlighted in green.
4. Click the Camera icon to the right of the playback controls.
The Browse for Folder window appears automatically.
5. Navigate to where you want to save the snapshot and click OK.
All saved snapshots will save to the chosen location automatically. To select a different location to save snapshots later, click the Modify Folder button on the Snapshot window when it appears.
6. Click the Camera icon again.
The Snapshot window appears automatically.

After the snapshot is saved, you can open it immediately or use your preferred graphic editing software to view it later. In the Snapshot window, select the **Snapshot all the video window** option to take a snapshot of all four video channels the next time a snapshot is taken.



Software Licensing Agreement

Use of the Safety View software and other SAFETY VISION, LLC software is subject to the accompanying software license terms. Using the software indicates your acceptance of these license terms. If you do not accept these license terms, you must return the software to the manufacturer.

If you do not accept these license terms and the software is bundled with another product, you must return the entire unused product to the manufacturer.

The following License Terms govern your use of the accompanying Software unless you have a separate signed agreement with SAFETY VISION, LLC

License Grant. SAFETY VISION, LLC grants you a license to Use one copy of the Software. "Use" means storing, loading, installing, executing or displaying the Software. You may not modify the Software or disable any licensing or control features of the Software. If the Software is licensed for "concurrent use," you may not allow more than the maximum number of authorized users to Use the Software concurrently.

Ownership. The Software is owned and copyrighted by SAFETY VISION, LLC Your license confers no title to, or ownership in, the Software and is not a sale of any rights in the Software.

Copies and Adaptations. You may make copies or adaptations of the Software only for archival purposes or when copying or adaptation is an essential step in the authorized Use of the Software. You must reproduce all copyright notices in the original Software on all copies or adaptations. You may not copy the Software onto any public network.

No Disassembly or Decryption. You may not disassemble or decompile the Software unless SAFETY VISION, LLC's prior written consent is obtained. In some jurisdictions, SAFETY VISION, LLC's consent may not be required for limited disassembly or decompilation. Upon request, you will provide SAFETY VISION, LLC with reasonably detailed information regarding any disassembly or decompilation. You may not decrypt the Software unless decryption is a necessary part of the operation of the Software.

Transfer. Your license will automatically terminate upon any transfer of the Software. Upon transfer, you must deliver the Software, including any copies and related documentation, to the transferee. The transferee must accept these License Terms as a condition to the transfer.

Termination. SAFETY VISION, LLC may terminate your license upon notice for failure to comply with any of these License Terms. Upon termination, you must immediately destroy the Software, together with all copies, adaptations and merged portions in any form.

Export Requirements. You may not export or re-export the Software or any copy or adaptation in violation of any applicable laws or regulations.

U.S. Government Restricted Rights. The Software and Documentation have been developed entirely at private expense. They are delivered and licensed as "commercial computer software" as defined in DFARS 252.227-7013 (Oct 1988), DFARS 252.211-7015 (May 1991) or DFARS 252.227-7014 (Jun 1995), as a "commercial item" as defined in FAR 2.101(a), or as "Restricted computer software" as defined in FAR 52.227-19 (Jun 1987) (or any equivalent agency regulation or contract clause), whichever is applicable. You have only those rights provided for such Software and Documentation by the applicable FAR or DFARS clause or the SAFETY VISION, LLC standard software agreement for the product involved.

Use of the Safety Vision Player and other SAFETY VISION, LLC software is subject to the accompanying software license terms. Using the software indicates your acceptance of these license

terms. If you do not accept these license terms, you must return the software to the manufacturer. If you do not accept these license terms and the software is bundled with another product, you must return the entire unused product to the manufacturer.

The following License Terms govern your use of the accompanying Software unless you have a separate signed agreement with SAFETY VISION, LLC

License Grant. SAFETY VISION, LLC grants you a license to Use one copy of the Software. "Use" means storing, loading, installing, executing or displaying the Software. You may not modify the Software or disable any licensing or control features of the Software. If the Software is licensed for "concurrent use," you may not allow more than the maximum number of authorized users to Use the Software concurrently.

Ownership. The Software is owned and copyrighted by SAFETY VISION, LLC Your license confers no title to, or ownership in, the Software and is not a sale of any rights in the Software.

Copies and Adaptations. You may make copies or adaptations of the Software only for archival purposes or when copying or adaptation is an essential step in the authorized Use of the Software. You must reproduce all copyright notices in the original Software on all copies or adaptations. You may not copy the Software onto any public network.

No Disassembly or Decryption. You may not disassemble or decompile the Software unless SAFETY VISION, LLC's prior written consent is obtained. In some jurisdictions, SAFETY VISION, LLC's consent may not be required for limited disassembly or decompilation. Upon request, you will provide SAFETY VISION, LLC with reasonably detailed information regarding any disassembly or decompilation. You may not decrypt the Software unless decryption is a necessary part of the operation of the Software.

Transfer. Your license will automatically terminate upon any transfer of the Software. Upon transfer, you must deliver the Software, including any copies and related documentation, to the transferee. The transferee must accept these License Terms as a condition to the transfer.

Termination. SAFETY VISION, LLC may terminate your license upon notice for failure to comply with any of these License Terms. Upon termination, you must immediately destroy the Software, together with all copies, adaptations and merged portions in any form.

Export Requirements. You may not export or re-export the Software or any copy or adaptation in violation of any applicable laws or regulations.

U.S. Government Restricted Rights. The Software and Documentation have been developed entirely at private expense. They are delivered and licensed as "commercial computer software" as defined in DFARS 252.227-7013 (Oct 1988), DFARS 252.211-7015 (May 1991) or DFARS 252.227-7014 (Jun 1995), as a "commercial item" as defined in FAR 2.101(a), or as "Restricted computer software" as defined in FAR 52.227-19 (Jun 1987) (or any equivalent agency regulation or contract clause), whichever is applicable. You have only those rights provided for such Software and Documentation by the applicable FAR or DFARS clause or the SAFETY VISION, LLC standard software agreement for the product involved.

CORPORATE HEADQUARTERS

6100 W. Sam Houston Pkwy. N.
Houston, TX 77041-5113
Main: 713.896.6600
Toll Free: 800.880.8855
Fax: 713.896.6640

www.safetyvision.com



Mobile video solutions for enhanced safety