

Driver Body Safety Camera



DriverBodyCamera.com provides Police Body Worn Camera technology to the Fleet Driver Risk Management markets, in an effort to reduce risks associated with fleet drivers that are not managed well with in-Vehicle Surveillance Solutions alone. For the first time what a driver sees and how they interact with a passenger or customer in or outside the vehicle can be documented for use as video evidence to reduce risk, validate claims, dismiss wrongful claims made against your company drivers.

Protect your School Bus or Fleet Drivers with Driver Body Worn Cameras that can help protect them from personal risk that can damage a driver's reputation, cause loss of work, loss of license or criminal charges.

Protect your School District or Company with Driver Body Worn Cameras that can help protect from liability lawsuits and wrongful claims made that can damage School District or company reputation and jeopardize assets from those who will bear false witness and deceive in order to get a fat settlement.

Features:

- High Quality High Technology Ambarella Processor Chip
- Super High Definition Resolution Images 1920 x 1080
- 2 inch TFT-LCD High-Resolution Color Display
- Time stamp display/ Car number stamp display
- GPS positioning location, Heading and speed (DBC-Pro only)
- IR LEDs for Night Vision Recording
- 140 Degree Viewing Angle, Large Field of View to Capture it all
- Dash Recorder Mode; works as a dashboard camera (DBC-Pro only)
- Rugged Weatherized Driver Body Camera solution

American Bus Video

www.AmericanBusVideo.com (770) 263-8118 sales@AmericanBusVideo.com

*All DVR specifications, features, GUI, hardware subject to frequent change by the manufacturer without notice. DBC-Pro requires GPS acquisition time when DVR is turned off or isolated from clear view of the sky. GPS functions such as Location, Speed, mapping and route functions will be affected until GPS acquisition is restored.

All Rights Reserved. © American Bus Video Inc. 2015

Applications Where Driver Safety Body Cameras Can Help:

Pre Drive Safety Check - Often a vehicle safety check is required by company policy or mandated before school bus or commercial vehicle is driven. This safety check can now be documented with the Driver Safety Body Worn Camera in case claims are made that the vehicle was not safe to operate on the road, missing lights, no strobe, no Stop Arm, under inflated tires or other safety violation.

Wheel Chair Lift Operation - While interior cameras inside a school bus or paratransit vehicle may document the inside view of the lift operation, some situations or incidents may occur where it would be helpful to capture the operation from the outside on a Driver Body Camera. While rare, occurrences of those being lifted removing the safety straps themselves that secure their chair to the lift have caused falls directly resulting them their own actions that targeting driver lift failure ended up in large settlements in order to avoid court jury litigation.

Special Needs Passengers - Often they will require straps to secure them into their seats for transport, and some strap applications require a driver to push or pull straps between their legs and under crotch areas. Those of diminished mental facilities or under pharmaceutical medication may miss-interrupt perceived privacy violations, sexual abuse during this operation. The Driver Body Worn Camera can provide much more detailed video evidence from the drivers point off view that cameras in the vehicle cannot provide.

Special Needs Passenger To Door - Are often assisted by the driver to their door which outside the vehicle is no longer documented by the School Bus or Transit vehicle surveillance system. Claims made regarding to door service cannot be substantiated or refuted when the driver leaves the vehicle as the vehicle mounted surveillance system focus on in vehicle events.

On Site Service Applications - Service Companies like pest control, lawn care, pool service all involve quick stops and checks or service on many locations a day and often the customer may not notice the service person has stopped by. In some cases a simple note will be left to let them know your lawn was treated, or your site was provided a pest control application. Often the customer will claim the driver did not provide the service requiring a return trip to provide the customer piece of mind that the company is reputable and the driver did the right service. The Driver Body Camera can provide video surveillance and documentation of on site service process outside the customer site with images video both time stamped for verification if needed.

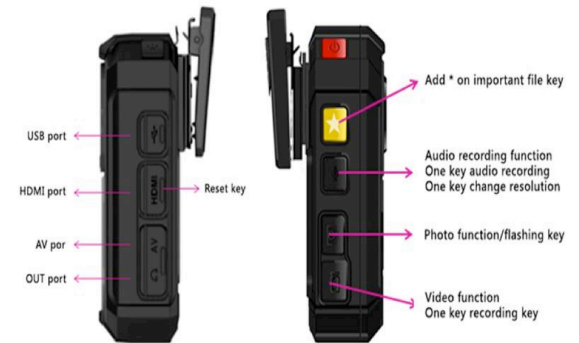
Security Officers - Similar functions of Police Body Camera performing motor and foot patrols can better document out of vehicle activities, interactions with others while documenting the process and details that might be overlooked at the time and later become essential in resolving liability litigation claims of wrongful action or activities.

The above application examples are just a sample of how cameras worn by drivers or officers can provide expert witness documentation of claims made that are often without third party witness and often difficult to resolve what really happened.

Regardless of the specific application when drivers perform their duties in the proper manor the Driver Body Camera can support their actions and provide verifiable video evidence that can confirm or refute allegations made against them.

Specification	Model # DBC-Pro
Size (L x W x H)	90mm *55mm *28mm
Chipset	Ambarella A7LA50 chipset
Weight	175g (6.17oz)
Sensor	5MP CMOS
Lens	Fixed Focus Lens (140° Field of view)
Video Image Resolution	SUPER High Definition: 2304x1296 P30
	FULL High Definition: 1920 x 1080 P45
	1/2 High Definition: 1280x720 60/P30
LCD	2 inch TFT-LCD High-Resolution Color Display
Waterproof	IP67
Built-in Memory	16GB, 32GB, 64GB
Night Vision	Up to 10 Meters with Visible Face Detection
Video Format	H.264 .AVI/MPEG4
Fast forward	2X, 4X, 8X, 16X, 32X, 64X
REW	2X, 4X, 8X, 16X, 32X, 64X
Time/Date stamp	Support
Burst	1/3/5 Shot burst picture taking
Microphone	Support
Speaker	Support
Battery Level	Visual Indicator
White balance	Auto
Scene	Auto
Exposure Compensation	Auto/-2.0 to +2.0
Shutter Speed	1/2~1/4000s
Video Output	HDMI 1.3 Port
IR Light	2 IR Light
HDMI or YPb Pr out	HDMI
Support mass storage	Windows 7/XP SP3 /Vista and Mac 10.4+
Power source	2800mAh Li-ion Battery
Battery life	over 8 hrs
Cycle record	Support
Standard accessories	
Vehicle cable, dock	Standard with DBC-Pro, option on DBC
Adapter, metal clip	yes
USB cable	yes
Language	English/Chinese/Russian/Japanese/Korean

Display screen Description



Lawful Compliance Is The Responsibility of The Customer & Product User

ABV Inc., staff and administration are not responsible for any purchase or use of our merchandise, which is in violation of any applicable law, regulation or ordinance. ABV Inc., staff and administration are not responsible to you or any third party for any direct, indirect, special, incidental or consequential damages, arising out of use, misuse or inability to use any of our products. It is your responsibility to ascertain consent requirements applicable for video and audio recording and to comply with all applicable local, state, and federal laws applicable to the purchase or use of our video and audio surveillance recording products in your jurisdiction. Should you have questions or concerns regarding the use of video and audio recording surveillance equipment, you are advised to contact an attorney licensed to practice law within your jurisdiction if you are unsure of the applicability of any law to the product you are purchasing or its intended use within your jurisdiction. By placing an order, you represent that you are of legal age to purchase the product being purchased in your jurisdiction, that you will use the product only in a lawful manner, and accept sole responsibility and liability should you use the product in a manor that violates the law.

DBC-Pro Dash Camera Optional Mount Screenshots

player

File View Playback Zoom

34.206N 84.132W
DSJ_M9ABV01_AUG223
2015/03/07 21:07:03

Name	Time	Date, time	Trip	mph
M9ABV01_AUG22320	1:20	yesterday 15:07		
M9ABV01_AUG22320	3:09	yesterday 15:14		
M9ABV01_AUG22320	16:08	yesterday 20:33	0.20mi	1.9
M9ABV01_AUG22320	0:02	yesterday 20:54		
M9ABV01_AUG22320	0:47	today 15:25		
M9ABV01_AUG22320	35:40	today 16:17	3.2mi	7.0
M9ABV01_AUG22320	13:14	today 17:56	1.84mi	25.2
M9ABV01_AUG22320	27:47	today 20:29	1.76mi	17.1
M9ABV01_AUG22320	14:43	today 21:04	6.4mi	26.0

9:04:00 PM 9:06:00 PM 9:07:02 PM 8:00 PM 9:10:00 PM 9:12:00 PM 9:14:00 PM 9:16:00 PM 9:18:00 PM

1/41/2 1x 4x 16x 64x

Loop A-B

40

M9ABV01_AUG22320150307152843_0025 (3) today 20:29 1.76mi 17.1mph - player

File View Playback Zoom

34.213N 84.116W
DSJ_M9ABV01_AUG223
2015/03/07 20:51:43

Name	Time	Date, time	Trip	mph
M9ABV01_AUG22320	1:20	yesterday 15:07		
M9ABV01_AUG22320	3:09	yesterday 15:14		
M9ABV01_AUG22320	16:08	yesterday 20:33	0.20mi	1.9
M9ABV01_AUG22320	0:02	yesterday 20:54		
M9ABV01_AUG22320	0:47	today 15:25		
M9ABV01_AUG22320	35:40	today 16:17	3.2mi	7.0
M9ABV01_AUG22320	13:14	today 17:56	1.84mi	25.2
M9ABV01_AUG22320	27:47	today 20:29	1.76mi	17.1
M9ABV01_AUG22320	14:43	today 21:04	6.4mi	26.0

8:30:00 PM 8:33:00 PM 8:36:00 PM 8:39:00 PM 8:42:00 PM 8:45:00 PM 8:48:00 PM 8:51:43 PM 1:54:00 PM

1/41/2 1x 4x 16x 64x

Loop A-B

1

American Bus Video

www.AmericanBusVideo.com (770) 263-8118 sales@AmericanBusVideo.com

*All DVR specifications, features, GUI, hardware subject to frequent change by the manufacturer without notice. DBC-Pro requires GPS acquisition time when DVR is turned off or isolated from clear view of the sky. GPS functions such as Location, Speed, mapping and route functions will be affected until GPS acquisition is restored.

All Rights Reserved. © American Bus Video Inc. 2015